

Dreamline

G7 & STX2 CUSHIONS

INSTALLATION & USER MANUAL



G7 Cushion













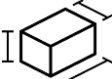


STX2 Cushion

CONTENTS:

	PAGE
Items included in this package	4
Intended use	5
Caution - risks identified	5
Disclaimer	5
Product life expectancy	6
Warranty	6
Installation instructions	7
Fitting the cushion to the user	8
Adjusting the positioning base of the g7	8
Adjusting the positioning base of the stx2	9
Accessories	11
Fitting the comfort wrap	12
Gel fluid packs	13
Caring for your cushion	14



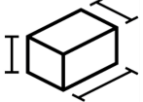
SYMBOLS

	Identifies products that meet the requirements of Regulation 2017/745 / EU on medical devices		Batch code
	Indicates that a product is a medical device		Catalogue number
	Shows the manufacturer of the medical device		Date of manufacture
	WC20 & ISO7176-19 certified for forward facing use in a motor vehicle		Authorized representative in the European Community
	Product weight (kgs)		Consult instructions for use
	Max User Weight (kgs)		Warnings
	Product Dimensions		

	<p style="text-align: center;">DREAMLINE G7 CUSHION</p> <p>Instant Comfort, stability, pressure redistribution personalized to the user. The G7 Cushion has a low 20mm high contour profile for easy transfers.</p>
	<p style="text-align: center;">STX2 CUSHION</p> <p>The Dreamline STX2 Cushion is a highly supportive deep contoured Fluid Gel Cushion with advanced On-the-spot positioning for the less active user with mild to severely asymmetrical positioning requirements.</p>

G7 CUSHION						
D7C1212	D7C1214	D7C1414	D7C1416	D7C1418	D7C1515	D7C1516
D7C1517	D7C1616	D7C1618	D7C1620	D7C1717	D7C1719	D7C1816
D7C1818	D7C1820	D7C1822	D7C1919	D7C2018	D7C2020	D7CCUST
D7CCUSTXL						
STX2 CUSHION						
DX2C1212	DX2C1214	DX2C1414	DX2C1416	DX2C1418	DX2C1515	DX2C1516
DX2C1517	DX2C1616	DX2C1618	DX2C1620	DX2C1717	DX2C1719	DX2C1816
DX2C1818	DX2C1820	DX2C1822	DX2C1919	DX2C2018	DX2C2020	DX2CCUST
DX2CCUSTXL						

WEIGHTS & DIMENSIONS

ITEM			
G7 Cushion	3.2	136	51cm x 56cm x 10cm
STX2 Cushion	3.7	136	51cm x 56cm x 16cm

INCLUDED IN THIS PACKAGE

Dreamline G7 Cushion



Outer Breathable cover x 1

Incontinence Cover x 1



Gel cluster fluid packs x 2

Comfort Wrap x 1



Cushion positioning Base x 1

Dreamline STX2 Cushion



Outer Breathable cover x 1

Incontinence Cover x 1



Gel cluster fluid packs x 2

Comfort Wrap x 1



Cushion positioning Base x 1

G7 Cushion Positioning Pads

- Adjustable Pommel x 1
- Pre-ischial shelf Wedge x 4
- Pelvic Obliquity Pads x 4

STX2 Cushion Positioning Pads

- Adjustable Pommel Left / Right x 1pr
- Pre-ischial shelf wedge x 4
- Laterals x 2
- Pelvic Obliquity Pads x 4
- Hip Angle Thigh wedges x 4

INTENDED USE

This item is intended for persons with disabilities as a seat cushion in a wheelchair. If there are any questions about product installation or compatibility with the wheelchairs, ROLAPAL customer service should be consulted.

Indication: Partially or permanently non-ambulatory limited to a sitting position

Contra-indication: None



CAUTION - RISKS IDENTIFIED

- This cushion can be positioned in many ways, take care to ensure the desired outcome is achieved for the occupant.
- Keep away from heaters and open flame – risk of fire.
- The cushion covers are removable for cleaning. Do not use if these are not correctly in place under the user.
- Take care when using this cushion in direct sunlight. Parts may heat up and increase risk of burns to the occupant.
- The cushion must overhang the front edge of the seat base it is attaching to by at least ½" (13mm) to protect against skin damage occurring from the seat base front edge.
- Do not use the cushion if the occupant's weight is more than the maximum recommended user weight of the cushion.
- The set-up of the wheelchair can affect the comfort of the cushion. Ensure the wheelchair is configured to match the measurements & sitting position of the user.
- An incorrectly fitted cushion can cause potential harm to the user. Carefully read the fitting instructions for correct positioning & orientation of the cushion on the wheelchair.
- The Gel packs contain small pieces – if the packs are damaged there is risk of choking on the contents if swallowed. Do not put the contents in mouth!
- If the Gel packs become damaged, discard in general waste & replace.
- Do not use the cushion if the Gel packs are damaged or removed. Seek advice or replacement from your prescribing therapist or wheelchair technician.
- The Gel packs are permanently sealed - Do not attempt to open the Gel packs.

REPORTING OF INCIDENTS

All serious incidents occurring in relation to the product must be reported to ROLAPAL Ltd and your competent authority!

DISCLAIMER

Because of the infinite adjustability of the cushion, Rolapal accepts no responsibility for the therapeutic outcome for the occupant. This is the responsibility of the prescribing seating therapist or technician.

REUSABILITY

The product is basically suitable for reuse. The reuse handover takes place after the product has been checked by the specialist trade.

SPECIAL STORAGE/HANDLING CONDITIONS

Do not store in environments above 50°. Do not store close to roofs to avoid heat. If not in use, please store in dust free environments.

PRODUCT LIFE EXPECTANCY

This item is expected to last between 2 – 5 years under normal use but this can change dramatically between users depending on the length of time in use, environment & weight of the user.

END OF LIFE RECYCLING

At the end of its useful life, the foam inner and covers are general waste disposal.

GUARANTEE

Dreamline Cushions are manufactured to a very high standard and carry a guarantee against defects in materials and craftsmanship for a period of 18 months under normal use.

Any item found to be defective will be repaired or replaced at the discretion of Rolapal Ltd.

Goods must be returned to Rolapal Ltd for assessment and the new repaired or replaced item will be sent free of charge.

This guarantee does not cover items which are damaged from general “wear and tear”, misuse or negligence.

INSTALLING YOUR DREAMLINE CUSHION ONTO THE WHEELCHAIR

ATTACHMENT

The cushion is designed to attach to the wheelchair with hook/loop attachment directly to the seat base or slung upholstery of the wheelchair or to a separate fitted seat base.

Check the cushion fits the wheelchair frame. If the cushion is too narrow, it may move around on the wheelchair frame. The cushion should fit snugly between the armrests of the wheelchair (to the outside edges of the seat rails of the wheelchair).

If the sling upholstery seat base of the wheelchair causes the cushion to “hammock” use a lightweight Dreamline Cushion Rigid base. The Dreamline rigid base attaches via Velcro directly to the underside of the cushion foam inner.

ORIENTATION

The raised centre portion of the cushion (medial thigh support pommel) is the **top front** of the cushion.

The sides of the cushion must be installed parallel to the seat rails of the wheelchair.

Top Front of cushion

The cushion carry handle is on the underside of the cushion at the front.



FITTING THE CUSHION TO USER

Before fitting, check the size of the cushion suits the user. The cushion must fully support the base of the user. If the cushion is too short the user may be unstable and uncomfortable in the cushion. A cushion which is too long may cause the user to pull forward into posterior pelvic tilt. When the user is sitting right back in the cushion against the backrest there should be approximately 1" (2 finger spaces) from behind the user's knee to the front edge of the cushion.

If the user has a leg length discrepancy, remove the cushion foam inner from the cover then mark & cut the front of the cushion foam on the side which is shorter to suit so the user can sit straight in the cushion. An un-accommodated leg length discrepancy may cause posterior pelvic tilt and/or pelvic rotation.

Ensure the length from the top surface of the cushion to the top surface of the footplate wheelchair is set up correctly for the user. The left side may be different to the right side so both need to be measured individually. The lower leg length should be set up so that the front of the cushion lightly takes the weight of the user. If the footplates are set too high the weight of the user will be concentrated under the Pelvis increasing the risk of pressure. When the footplates are set too low the user may slip forward in the seat &/or circulation may be reduced to the lower limbs.

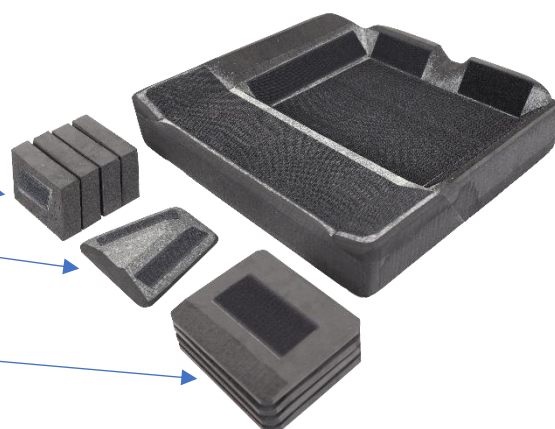
Sit the user straight in the cushion with an even amount of spacing each side of the user. This will help ensure the user develops a symmetrical mid-line posture.

Use the positioning pads to accommodate or correct pelvic & femoral asymmetries. They can be set up according to the wishes of the prescribing therapist to asymmetrically change the contours of the cushion. i.e., to increase the pre-ischial shelf, correct pelvic obliquity etc.

ADJUSTING THE POSITIONING BASE ON THE DREAMLINE G7 CUSHION

Extra pads are included to personalize the cushion to the user

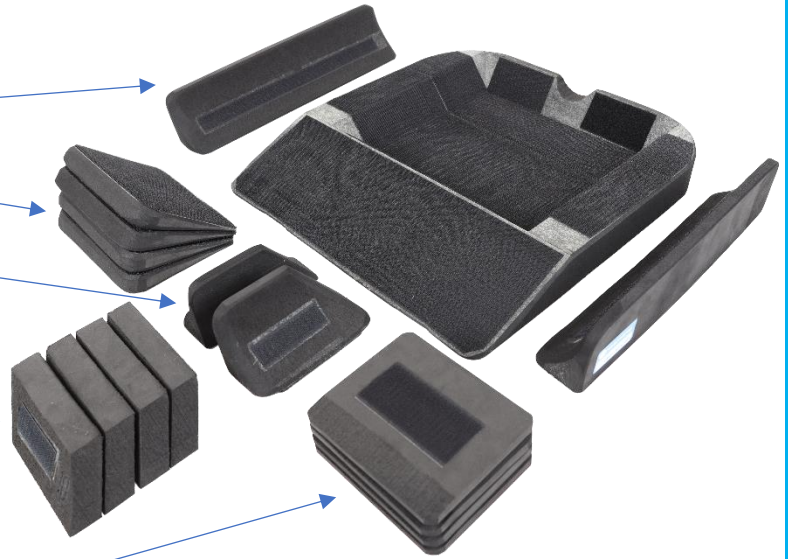
- Pre-Ischial Shelf wedges x 4 (to adjust the length of the ischial well)
- Abductor Pommel
- Pelvic Obliquity Pads x4 (can also be used to reduce the depth of the ischial well).



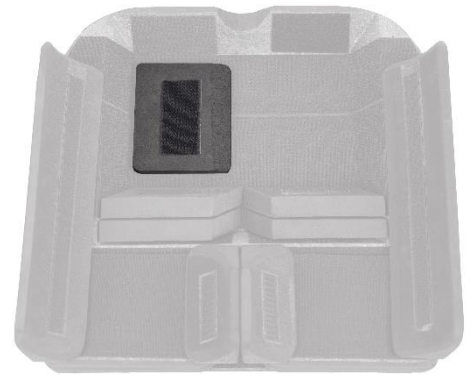
ADJUSTING THE POSITIONING BASE ON THE DREAMLINE STX2 CUSHION

Extra pads are included to personalize the cushion to the user

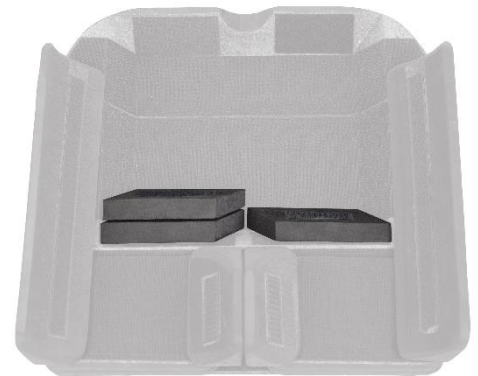
- Laterals x 2
- Hip Angle Thigh wedges x 4
- Abductor Pommel left / right pr
- Pre-Ischial Shelf wedges x 4 (to adjust the length of the ischial well)
- Pelvic Obliquity Pads x4 (can also be used to reduce the overall depth of the ischial well).



PELVIC OBLIQUITY



PELVIC ROTATION



HIP ANGLE

Left / right individually.



80° - 1 Wedge



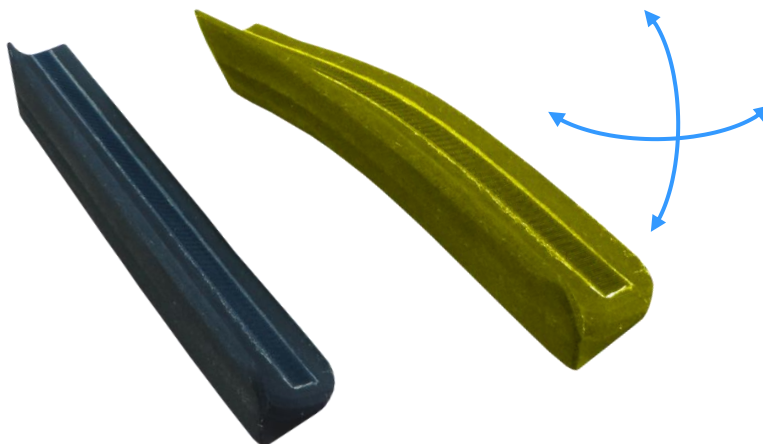
70° - 2 wedges



LATERALS FLEXED

The Laterals may be flexed into shape accurately follow the contours from the pelvis to the knee. This enables a smooth unbroken surface along the leg for improved weight distribution.

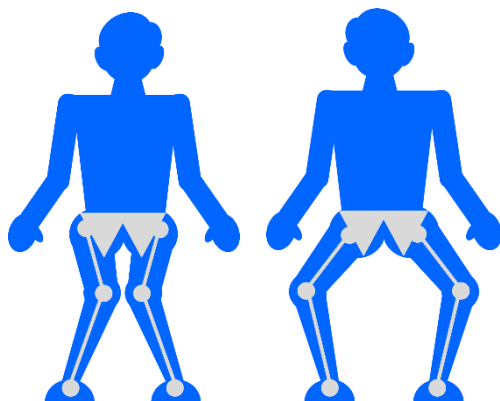
Preform the laterals as desired over a ledge or your knee before installing them so they retain their position.



Ab/adduction

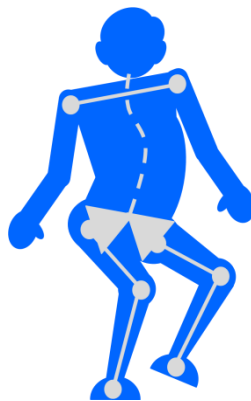
Internal / external Femoral Rotation

Note the pre-ischial wedges able to be attached to the sides of the ischial well.

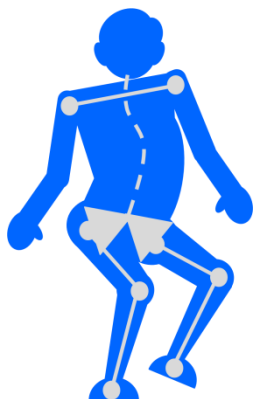


Windswept

Note the pre-ischial wedges able to be attached to the sides of the ischial well to offset the well.



Complex



Symmetrical



Asymmetrical

OTHER POSITIONING ACCESSORIES

EXTRA CLUSTER GEL PACKS AS SHAPERS & FILLERS

Use extra cluster packs (gel or foam) to create more shapes & fill cavities if required.



EXTRA LATERAL SEGMENTS

Extra Lateral Segments can be purchased separately to further customise the seat base to the user.



OTHER ACCESSORIES

Cushion Rigid Base



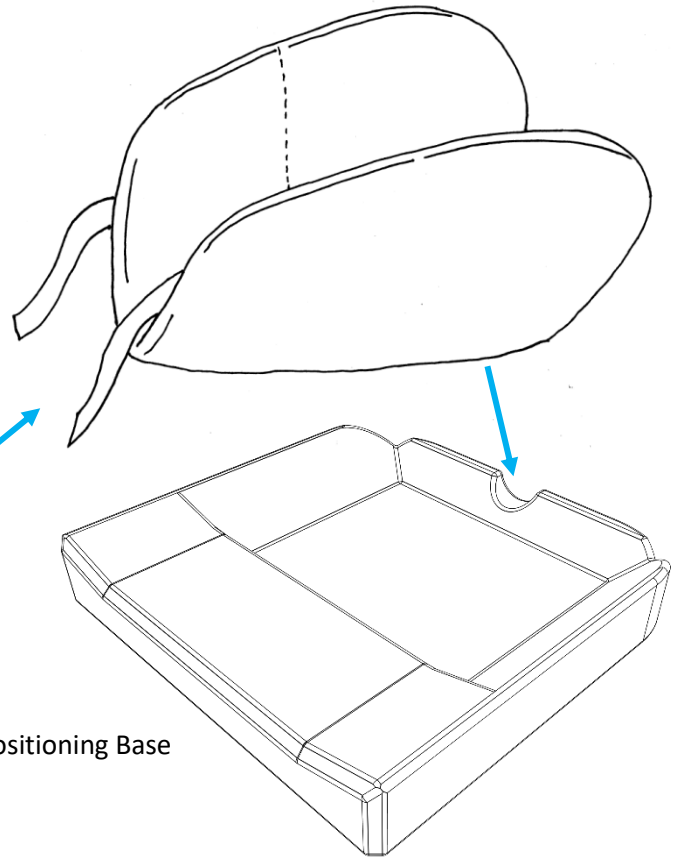
Cushion Rigid Lateral



FITTING THE COMFORT WRAP

1. Orientation
 - The hook tabs on the comfort wrap face the front of the cushion. The care label is at the rear
2. Fold the wrap in half as shown
3. Sit the rear of the wrap in the coccyx cut-out at the rear of the positioning base.
4. Press the comfort wrap into the ischial well on the positioning base.
5. Lay the femur section onto the positioning base.
6. Attach the hook tabs at the front of the comfort wrap onto the loop panel on the underside of the positioning base.

Comfort Wrap



Positioning Base



Hook Tabs



G7 Cushion comfort wrap installed



STX2 Cushion comfort wrap installed

DREAMLINE CLUSTER GEL FLUID PACKS

Dreamline Cluster Gel Fluid Packs are attached with hook & loop inside the rear pocket on the Comfort Wrap.

The pocket for the gel in the Comfort Wrap protects the gel packs from movement during transfers.

No kneading or ongoing maintenance is required for the gel packs.

The gel is designed to provide pressure redistribution to the pelvic region.

The gel packs are longer than they are wider in length than in width, normally they should be placed with the longer length parallel to the sides of the cushion. The gel pack orientation can be changed by the prescribing therapist or seating technician but check the effect of pressure redistribution when altering the set up.

If a Gel pack is damaged, discard in general waste & do not use the cushion until it has been replaced.



NOTE: Using the Pre-ischial Growth Pads (Page.7) may adjust the weight redistribution of the Gel Packs. Try different set-ups with using the pads & removing them for best redistribution results.

CARE INSTRUCTIONS



Do not iron



Drip dry only



Machine washable



No bleach or strong cleaners

- **Outer Cover** (Nylon / Spandex / PU / Polyester / Neoprene)
 - Machine washable to 50°C. Drip dry only. Do not Iron. Do not use bleach or other strong cleaners.
- **Inner Cover** (PU / Nylon / Spandex)
 - Wipe down only with soapy water and drip dry thoroughly before re-installing the outer cover. Do not iron, do not use bleach or strong cleaners.
- **Comfort Wrap**
 - KEEP DRY. The life span of the cushion will be greatly reduced if the cushion becomes wet.
 - Do Not wash the foam inner. If it accidentally becomes wet, separate it from the cover & drip dry it thoroughly before re-installing the cover.

Dreamline

WHEELCHAIR SEATING



Posture adaptive

Pressure reactive

Performance effective

Ignite

SPLASH

Dreamline

WHEELCHAIR SEATING



Woven Air

snooza



Quality Assurance

Rolapal Ltd is an ISO 9001, 14001 & 45001 certified company!

Dreamline

WHEELCHAIR SEATING

by

ROLAPAL



Dr Dreamline

Check out our "How to"
Videos Pages

Manufactured By:



ROLAPAL Ltd

14 Marphona Crescent, Takanini 2105 Auckland, New Zealand

Email: info@rolapal.co.nz

Website: www.rolapal.co.nz

EC

REP

BEO MedConsulting Berlin GmbH

Helmholtzstraße 2–9, D-10587 Berlin

