

# Dreamline

WHEELCHAIR SEATING



Visual Code  
Directory



# Contents

## **CUSHIONS**

<i>About “Bubble Contour” Series</i>	2
<i>Dreamline Assist Cushion</i>	3
<i>Dreamline Support Cushion</i>	3
<i>Dreamline Contour Cushion</i>	3
<i>About “Adjuster” Series</i>	4
<i>Gel Fluid Pack</i>	5
<i>Dreamline G7 Cushion</i>	6
<i>Dreamline STX2 Cushion</i>	6
<i>About “Pressure Redistribution” Cushions</i>	7
<i>S5 Cushion</i>	8
<i>Woven Air Cushion</i>	8
<i>Woven Air Sprint Cushion</i>	8
<i>Dreamline Cushion Accessories</i>	9
<i>Dreamline Cushion Modifications</i>	14

## **SEAT BASES**

<i>Dreamline Quick-Release Seat Pan</i>	20
<i>Dreamline Cushion Rigid Base</i>	20
<i>Dreamline Seat Base Accessories</i>	21
<i>Dreamline Seat Base Modifications</i>	22

## **BACKRESTS**

<i>About “Ignite” Series</i>	26
<i>Ignite Active Backrest</i>	28
<i>Ignite Mid Backrest</i>	29
<i>Ignite Deep Backrest</i>	30
<i>Ignite Pro Active (Carbon)</i>	31
<i>Ignite Pro Mid (Carbon)</i>	32
<i>Ignite Pro Deep (Carbon)</i>	33
<i>Ignite Backrest Order Codes</i>	34

# Contents *cont.*

<i>Dreamline Contour Backrest</i>	36
<i>About the "Support" Series</i>	38
<i>About STX Backrests</i>	40
<i>BAC System</i>	41
<i>Dreamline Support Backrest</i>	44
<i>Dreamline S3 Backrest</i>	45
<i>Dreamline STX Backrest</i>	45
<i>Dreamline Backrest Accessories</i>	46
<i>Dreamline Backrest Modifications</i>	51
<i>Corpus Backrest Foam &amp; Cover</i>	53

## **MEDIAL THIGH SUPPORTS**

<i>Swing-down Medial Thigh Support Bracket</i>	59
<i>Swing-down Medial Thigh Support Pad</i>	59
<i>Swing-down Medial Thigh Support Accessories</i>	60
<i>Swing-down Medial Thigh Support Modifications</i>	61

## **HIP GUIDES & ARMRESTS**

<i>Swing-down/removable Hip/Thigh Guide Brackets</i>	66
<i>Swing-down/removable Hip/Thigh Guide Pads</i>	67
<i>Armrests</i>	67
<i>Hip/Thigh Guide &amp; Armrest Accessories</i>	68
<i>Hip/Thigh Guide &amp; Armrest Modifications</i>	70

## **TRUNK LATERAL SUPPORT HARDWARE**

<i>Fixed Trunk Lateral Brackets</i>	74
<i>Original Trunk Swing-away Lateral Brackets</i>	75
<i>Saddleback Trunk Swing-away Lateral Brackets</i>	76
<i>Swing-away Trunk Lateral Pads</i>	78
<i>Swing-away Trunk Lateral Accessories</i>	80
<i>Swing-away Trunk Lateral Modifications</i>	81

# Contents cont.

## HEADRESTS

<i>Saddleback Headrest Brackets</i>	86
<i>Headrest Pads</i>	87
<i>Headrest Accessories</i>	89
<i>Headrest Modifications</i>	90

## HIP BELTS, HARNESSSES & CALF STRAPS

<i>Harnesses</i>	94
<i>Harness Accessories &amp; Modifications</i>	95
<i>Hip Belts &amp; Accessories</i>	97
<i>Padded Calf Strap &amp; Modifications</i>	101

## FASTENERS

<i>Fastener kits etc.</i>	104
<i>Dreamline Service Kits</i>	108

## SPLASH

<i>About "Splash" Series</i>	112
<i>Splash Backrests</i>	113
<i>Splash Backrest Accessories</i>	114
<i>Splash Trunk Lateral Support Pads</i>	116
<i>Splash Headrest Pads</i>	117
<i>Splash H2X Harnesses</i>	119

## SNOOZA

<i>About "Snooza" Series</i>	124
<i>Snooza Seat Order Codes</i>	125
<i>Snooza Headrests</i>	126
<i>Snooza Medial Thigh Support</i>	126
<i>Snooza Mobile Bases</i>	127
<i>Snooza Other Accessories</i>	128





*Dreamline Code Visual Directory 2023*

# › *Cushions*

# Dreamline Bubble Contour Series

The Dreamline "Bubble Contour" series are foam cushions with unique shaping designed to reduce surface tension enabling more immersion. They include a Sunmate Visco foam overlay.

Dreamline "Bubble Contour" series all contain a hook receptive loop panel on the underside of the foam inner onto which the Pelvic Obliquity Pads (set of 4 included with each cushion) can be attached for asymmetrical postures.

## ASSIST

15mm Contour Profile



## SUPPORT

30mm Contour Profile



## CONTOUR

60mm Contour Profile



### INCLUDED

- Cushion Foam Inner
- Dartex WATER RESISTANT Cover
- Outer Breathable Cover
- Set of 4 Pelvic Obliquity Pads



Bubble Contour Series Max User Weight: 120kg (user weight limit can be increased for custom cushions)

## PELVIC OBLIQUITY PAD SIZING CHART

CUSHION (shortest width or length of cushion)	8"	10"	12"	14"	16"	18"	20"	22"	24"
PAD WIDTH / LENGTH (mm)	95	120	140	160	185	210	235	260	285
PAD HEIGHT (mm)	10	10	10	10	10	10	10	10	10
CODE (Set of 4)	DCOP8	DCOP10	DCOP12	DCOP14	DCOP16	DCOP18	DCOP20	DCOP22	DCOP24

Outer Cover only add "OC" to end of code • Inner Cover only add "IC" to end of code



## ASSIST



<i>DAC0808</i>	<i>DAC0810</i>	<i>DAC1010</i>	<i>DAC1012</i>	<i>DAC1212</i>	<i>DAC1214</i>	<i>DAC1414</i>
<i>DAC1416</i>	<i>DAC1418</i>	<i>DAC1515</i>	<i>DAC1516</i>	<i>DAC1517</i>	<i>DAC1616</i>	<i>DAC1618</i>
<i>DAC1620</i>	<i>DAC1717</i>	<i>DAC1719</i>	<i>DAC1816</i>	<i>DAC1818</i>	<i>DAC1820</i>	<i>DAC1919</i>
<i>DAC2018</i>	<i>DAC2020</i>	<i>DAC2218</i>	<i>DAC2220</i>	<i>DAC2222</i>	<i>DAC2420</i>	<i>DAC2422</i>
<i>DAC2424</i>	<i>DACCUST</i>	<i>DACCUSTXL</i>				

*Outer Cover only add "OC" to end of code • Inner Cover only add "IC" to end of code*

## SUPPORT



<i>DSC0808</i>	<i>DSC0810</i>	<i>DSC1010</i>	<i>DSC1012</i>	<i>DSC1212</i>	<i>DSC1214</i>	<i>DSC1414</i>
<i>DSC1416</i>	<i>DSC1418</i>	<i>DSC1515</i>	<i>DSC1516</i>	<i>DSC1517</i>	<i>DSC1616</i>	<i>DSC1618</i>
<i>DSC1620</i>	<i>DSC1717</i>	<i>DSC1719</i>	<i>DSC1816</i>	<i>DSC1818</i>	<i>DSC1820</i>	<i>DSC1919</i>
<i>DSC2018</i>	<i>DSC2020</i>	<i>DSC2218</i>	<i>DSC2220</i>	<i>DSC2222</i>	<i>DSC2420</i>	<i>DSC2422</i>
<i>DSC2424</i>	<i>DSCCUST</i>	<i>DSCCUSTXL</i>				

*Outer Cover only add "OC" to end of code • Inner Cover only add "IC" to end of code*

## CONTOUR



<i>DCC0808</i>	<i>DCC0810</i>	<i>DCC1010</i>	<i>DCC1012</i>	<i>DCC1212</i>	<i>DCC1214</i>	<i>DCC1414</i>
<i>DCC1416</i>	<i>DCC1418</i>	<i>DCC1515</i>	<i>DCC1516</i>	<i>DCC1517</i>	<i>DCC1616</i>	<i>DCC1618</i>
<i>DCC1620</i>	<i>DCC1717</i>	<i>DCC1719</i>	<i>DCC1816</i>	<i>DCC1818</i>	<i>DCC1820</i>	<i>DCC1919</i>
<i>DCC2018</i>	<i>DCC2020</i>	<i>DCC2218</i>	<i>DCC2220</i>	<i>DCC2222</i>	<i>DCC2420</i>	<i>DCC2422</i>
<i>DCC2424</i>	<i>DCCCUST</i>	<i>DCCCUSTXL</i>				

*Outer Cover only add "OC" to end of code • Inner Cover only add "IC" to end of code*

# Dreamline Adjuster Cushion Series

The Adjuster series gives an advanced toolbox of adjustability & creativity to the clinician to optimise their postural goals for the symmetrical to severely asymmetrical user. Fluid Gel packs in the pelvic region provide dynamic pressure management helping to equalize & redistribute pressure away from at risk regions.

**G7**  
20mm Contour Profile



**STX2**  
80mm Contour Profile



The Dreamline G7 fluid gel cushion is defined by pressure redistribution & positioning personalized to the user.

The Dreamline STX2 Cushion is a highly supportive deep contoured fluid gel cushion with advanced on-the-spot positioning for the less active user with mild to severely asymmetrical positioning requirements.

## INCLUDED

- Outer Breathable Cover
- FLO2 WATER RESISTANT Cover
- Comfort Wrap
- Gel Fluid Packs x 2
- Positioning Base
- Medial Thigh Support
- Pelvic Obliquity Pads x 4
- Anterior Ischial Shelf Wedges x 4



G7 Max User Weight: 150kg

## INCLUDED

- Outer Breathable Cover
- FLO2 WATER RESISTANT Cover
- Comfort Wrap
- Gel Fluid Packs x 2
- Positioning Base
- Medial Thigh Support L / R
- Pelvic Obliquity Pads x 4
- Anterior Ischial Shelf Wedges x 4
- Lateral Supports x 2
- Interior Thigh Wedges x 4 (for hip flexion)



STX2 Max User Weight: 150kg

## PELVIC OBLIQUITY PAD SIZING FOR G7 & STX2 CUSHIONS

CUSHION WIDTH	12"	14"/15"	16" / 17"	18"/19"	20"
PAD WIDTH / LENGTH (mm)	55 x 105	70 x 145	95 x 175	120 x 215	145 x 215
PAD HEIGHT (mm)	10	10	10	10	10

## PRE-ISCHIAL WEDGE SIZING FOR G7 & STX2 CUSHIONS

CUSHION WIDTH	12"	14"/15"	16" / 17"	18"/19"	20"
PAD WIDTH / LENGTH (mm)	60	80	105	130	155
PAD HEIGHT (mm)	25	25	25	25	25

**GEL FLUID PACK  
DIMENSIONS FOR G7  
& STX2 CUSHIONS**



<i>CUSHION SIZE</i>	<i>CODE</i>	<i>WIDTH X LENGTH (mm)</i>
<i>Any</i>	<i>DCGFP46</i>	<i>100 x 150</i>
<i>12x12</i>	<i>DCGFP1212</i>	<i>155 x 185</i>
<i>12x14</i>	<i>DCGFP1214</i>	<i>155 x 210</i>
<i>14x14 / 15x15</i>	<i>DCGFP1414</i>	<i>180 x 210</i>
<i>14x16 / 15x16 / 15x17</i>	<i>DCGFP1416</i>	<i>180 x 250</i>
<i>14x18</i>	<i>DCGFP1418</i>	<i>180 x 280</i>
<i>16x16 / 17x17</i>	<i>DCGFP1616</i>	<i>205 x 250</i>
<i>16x18 / 17x19</i>	<i>DCGFP1618</i>	<i>205 x 280</i>
<i>16x20</i>	<i>DCGFP1620</i>	<i>205 x 320</i>
<i>18x16</i>	<i>DCGFP1816</i>	<i>230 x 250</i>
<i>18x18 / 19x19</i>	<i>DCGFP1818</i>	<i>230 x 280</i>
<i>18x20</i>	<i>DCGFP1820</i>	<i>230 x 320</i>
<i>18x22</i>	<i>DCGFP1822</i>	<i>230 x 360</i>
<i>20x18</i>	<i>DCGFP2018</i>	<i>255 x 280</i>
<i>20x20</i>	<i>DCGFP2020</i>	<i>255 x 320</i>
<i>Custom up to 20x20</i>	<i>DCGFPCUST</i>	<i>Custom</i>
<i>Custom from 20x21 to 26x26</i>	<i>DCGFPCUSTXL</i>	<i>Custom</i>

## G7 CUSHION



D7C1212	D7C1214	D7C1414	D7C1416	D7C1418	D7C1515	D7C1516
D7C1517	D7C1616	D7C1618	D7C1620	D7C1717	D7C1719	D7C1816
D7C1818	D7C1820	D7C1822	D7C1919	D7C2018	D7C2020	D7CCUST
D7CCUSTXL						

*Outer Cover only add "OC" to end of code • Inner Cover only add "IC" to end of code*

## STX2 CUSHION



DX2C1212	DX2C1214	DX2C1414	DX2C1416	DX2C1418	DX2C1515	DX2C1516
DX2C1517	DX2C1616	DX2C1618	DX2C1620	DX2C1717	DX2C1719	DX2C1816
DX2C1818	DX2C1820	DX2C1822	DX2C1919	DX2C2018	DX2C2020	DX2CCUST
DX2CCUSTXL						

*Outer Cover only add "OC" to end of code • Inner Cover only add "IC" to end of code*

# Dreamline Pressure Redistribution Cushions

Dreamline pressure redistribution cushions have been carefully designed to effectively redistribute pressure while maintaining a stable base for the user.

Dreamline uses two main mediums for pressure for effective redistribution; Air & Gel Fluid packs. These two mediums have a very different feel but achieve a similar result.

Gel Fluid packs have a solid feel making the cushion very stable but are heavier while Air cushions have a more spongy feel and are lightweight but some stability is lost.

## S5 CUSHION



The Dreamline S5 Cushion is a soft comfortable mild contoured cushion with pockets in the pelvic region which contain Fluid Gel packs which makes for excellent positioning, weight redistribution & skin protection.

## WOVEN AIR CUSHION



“Flotation without inflation”  
For an air cushion, the Dreamline Woven Air cushion has great lateral stability whilst providing true flotation pressure redistribution. The cushion is very low maintenance & does not require ongoing inflation. If damaged, air tubes can be replaced individually.

Positioning pads such as Pelvic Obliquity pads are able to be attached to the underside of the Woven Air cushion or to the Contour Base.

## WOVEN AIR SPRINT CUSHION



The Dreamline Woven Air Sprint Cushion is a super lightweight slim cushion combining a stable closed cell foam base with extra support under the thighs & Air packs in the ischial region making it a great choice for self-propelling users.

### INCLUDED

- Outer FLO2™ Cover with water resistant upper
- Gel Fluid Packs x 2
- Cushion foam inner



Max User Weight: 150kg

### INCLUDED

- FLO2™ outer Breathable Cover
- Inner air Pocket
- 16 woven Air Tubes 90mm high (apart from 18”x22” & 20”x20” which have 20 Air Tubes)



Max User Weight: 180kg

### INCLUDED

- Outer FLO2™ Cover with water resistant upper
- Positioning base
- Comfort wrap for thigh region
- Air Pocket insert
- Air Tubes x 8 60mm high



Max User Weight: 180kg

**DREAMLINE S5  
CUSHION**



D5C1212	D5C1214	D5C1414	D5C1416	D5C1418	D5C1515	D5C1516
D5C1517	D5C1616	D5C1618	D5C1620	D5C1717	D5C1719	D5C1816
D5C1818	D5C1820	D5C1822	D5C1919	D5C2018	D5C2020	D5CCUST
D5CCUSTXL						

Outer Cover only add "OC" to end of code • Inner Cover only add "IC" to end of code

**WOVEN AIR  
CUSHION**



WAC1414	WAC1416	WAC1418	WAC1515	WAC1516	WAC1517	WAC1616
WAC1618	WAC1620	WAC1717	WAC1719	WAC1816	WAC1818	WAC1820
WAC1822	WAC1919	WAC2018	WAC2020	WACCUST	WACCUSTXL	

Outer Cover only add "OC" to end of code • Inner Cover only add "IC" to end of code

**WOVEN AIR  
CONTOUR BASE**



(fits inside the cover  
& adds mild contouring  
to the woven Air Cushion)

WAC1414	WAC1416	WAC1418	WAC1515	WAC1516	WAC1517	WAC1616
WAC1618	WAC1620	WAC1717	WAC1719	WAC1816	WAC1818	WAC1820
WAC1822	WAC1919	WAC2018	WAC2020	WACCUST	WACCUSTXL	

Outer Cover only add "OC" to end of code • Inner Cover only add "IC" to end of code

**WOVEN AIR  
SPRINT CUSHION**



WSC1414	WSC1416	WSC1418	WSC1515	WSC1516	WSC1517	WSC1616
WSC1618	WSC1620	WSC1717	WSC1719	WSC1816	WSC1818	WSC1820
WSC1822	WSC1919	WSC2018	WSC2020	WSCCUST	WSCCUSTXL	

Outer Cover only add "OC" to end of code • Inner Cover only add "IC" to end of code

# Dreamline Cushion Accessories

## PELVIC OBLIQUITY PADS FOR BUBBLE CONTOUR SERIES

(SET OF 4)

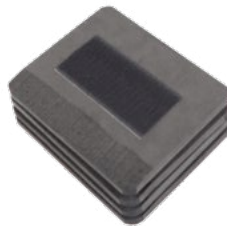


<i>DCOP8</i>	<i>DCOP10</i>	<i>DCOP12</i>	<i>DCOP14</i>	<i>DCOP16</i>
<i>DCOP18</i>	<i>DCOP20</i>	<i>DCOP22</i>	<i>DCOP24</i>	<i>DCOPCUST</i>

(see sizing on page 2)

## PELVIC OBLIQUITY PADS FOR G7 & STX2 CUSHIONS

(SET OF 4)



<i>DXCOP08</i>	<i>DXCOP10</i>	<i>DXCOP12</i>	<i>DXCOP14</i>	<i>DXCOP16</i>
<i>DXCOP17</i>	<i>DXCOP18</i>	<i>DXCOP20</i>	<i>DXCOP22</i>	<i>DXCOP24</i>
<i>DXCOPCUST</i>				

(see sizing on page 4)

## ANTERIOR ISCHIAL SHELF WEDGES FOR G7 & STX2 CUSHIONS

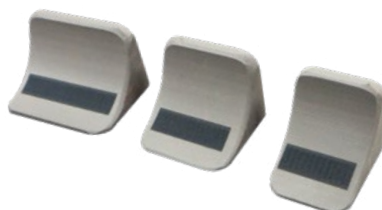
(SET OF 4)



<i>DX2CPIW12</i>	<i>DX2PIW14</i>	<i>DX2CPIW15</i>	<i>DX2CPIW16</i>	<i>DX2CPIW17</i>
<i>DX2CPIW18</i>	<i>DX2CPIW19</i>	<i>DX2CPIW20</i>	<i>DX2CPIWCUST</i>	<i>DX2CPIWCUSTXL</i>

## SEGMENTS FOR STX2 CUSHIONS

(80MM HIGH)



<i>CUSHION LENGTH (mm)</i>	<i>75</i>	<i>100</i>	<i>150</i>
<i>CODE</i>	<i>DXCLAT03</i>	<i>DXCLAT04</i>	<i>DXCLAT06</i>

# Dreamline Cushion Accessories *cont.*

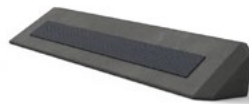
## LATERALS FOR STX2 CUSHIONS (80MM HIGH)



CUSHION LENGTH (inch)	12"	14"	15"	16"	17"	18"
CUSHION LENGTH (mm)	220	270	295	320	345	370
CODE	DX2CLAT12	DX2CLAT14	DX2CLAT15	DX2CLAT16	DX2CLAT17	DX2CLAT18

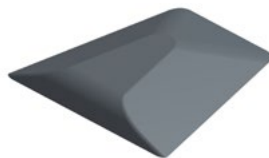
CUSHION LENGTH (inch)	19"	20"	22"		
CUSHION LENGTH (mm)	395	420	470		
CODE	DX2CLAT19	DX2CLAT20	DX2CLAT22	DX2CLATCUST	DX2CLATCUSTXL

## LOW LATERAL SEGMENTS FOR STX2 CUSHIONS (40MM HIGH)



LATERAL LENGTH (mm)	150	200	250
CODE	DXCLATLL06	DXCLATLL08	DXCLATLL10

## G7 MEDIAL THIGH SUPPORT (20MM HIGH)



SMALL	DGCPOMSML
LARGE	DGCPOMLGE

## STX2 MEDIAL THIGH SUPPORT (80MM HIGH)



LEFT	SMALL	DXCPOML4
	LARGE	DXCPOMR4
RIGHT	SMALL	DXCPOML6
	LARGE	DXCPOMR6



# Dreamline Cushion Accessories cont.

**STX2 EXTRA  
THIGH WEDGE  
(FOR HIP FLEXION)**



<i>DX2CTW12</i>	<i>DX2CTW14</i>	<i>DX2CTW16</i>	<i>DX2CTW17</i>	<i>DX2CTW18</i>	<i>DX2CTW20</i>	<i>DX2CTWCUST</i>
-----------------	-----------------	-----------------	-----------------	-----------------	-----------------	-------------------

**GEL CLUSTER  
PACK**

*DCG46*



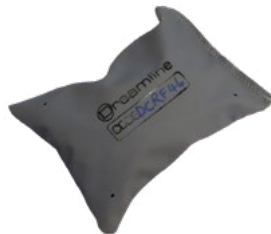
**SUNMATE  
CLUSTER PACK**

*DCSF46*



**RESILIENT FOAM  
CLUSTER PACK**

*DCRF46*



**STX BAC PADS  
10 KIT**

*DXCBACKIT*



# Dreamline Cushion Accessories *cont.*

## CUSHION GEL WRAP



<i>DCGW0808</i>	<i>DCGW0810</i>	<i>DCGW1010</i>	<i>DCGW1012</i>	<i>DCGW1212</i>	<i>DCGW1214</i>	<i>DCGW1414</i>
<i>DCGW1416</i>	<i>DCGW1418</i>	<i>DCGW1515</i>	<i>DCGW1516</i>	<i>DCGW1517</i>	<i>DCGW1616</i>	<i>DCGW1618</i>
<i>DCGW1620</i>	<i>DCGW1717</i>	<i>DCGW1719</i>	<i>DCGW1816</i>	<i>DCGW1818</i>	<i>DCGW1820</i>	<i>DCGW1822</i>
<i>DCGW1919</i>	<i>DCGW2018</i>	<i>DCGW2020</i>	<i>DCGW2218</i>	<i>DCGW2220</i>	<i>DCGW2222</i>	<i>DCGW2420</i>
<i>DCGW2422</i>	<i>DCGW2424</i>	<i>DCGWCUST</i>	<i>DCGWCUSTXL</i>			

## CUSHION RIGID BASE



<i>DCRB0808</i>	<i>DCRB0810</i>	<i>DCRB1010</i>	<i>DCRB1012</i>	<i>DCRB1212</i>	<i>DCRB1214</i>	<i>DCRB1414</i>
<i>DCRB1416</i>	<i>DCRB1418</i>	<i>DCRB1515</i>	<i>DCRB1517</i>	<i>DCRB1519</i>	<i>DCRB1616</i>	<i>DCRB1618</i>
<i>DCRB1620</i>	<i>DCRB1717</i>	<i>DCRB1719</i>	<i>DCRB1816</i>	<i>DCRB1818</i>	<i>DCRB1820</i>	<i>DCRB1919</i>
<i>DCRB2018</i>	<i>DCRB2020</i>	<i>DCRB2218</i>	<i>DCRB2220</i>	<i>DCRB2222</i>	<i>DCRB2420</i>	<i>DCRB2422</i>
<i>DCRB2424</i>	<i>DCRBCUST</i>	<i>DCRBCUSTXL</i>				

- Cushion rigid bases are 40mm narrower overall than the cushion width (they are designed to fit between the seat rails & tighten the upholstery).
- Cushion rigid bases are 30mm smaller than cushion depth to protect the user.

# Dreamline Cushion Accessories *cont.*

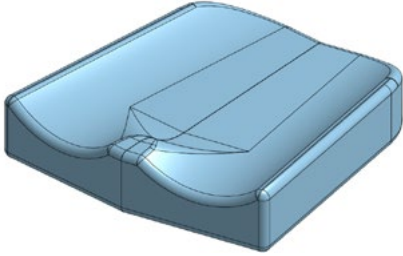
## WOVEN AIR TUBES SPARE PARTS



CODE	DESCRIPTION	TUBE LENGTH (mm)	QTY
WAT1460	Woven Air Tube 14"	870	4pk
WAT1560	Woven Air Tube 15"	930	4pk
WAT1660	Woven Air Tube 16" x 60mm (for STX2/G7/Sprint Cushions)	990	4pk
WAT1760	Woven Air Tube 17" x 60mm (for STX2/G7/Sprint Cushions)	1050	4pk
WAT1860	Woven Air Tube 18" x 60mm (for STX2/G7/Sprint Cushions)	1110	4pk
WAT2060	Woven Air Tube 20" x 60mm (for STX2/G7/Sprint Cushions)	1200	4pk
WAT1690	Woven Air Tube 16" x 90mm	990	4pk
WAT1790	Woven Air Tube 17" x 90mm	1050	4pk
WAT1890	Woven Air Tube 18" x 90mm	1110	4pk
WAT2090	Woven Air Tube 20" x 90mm	1200	4pk
WATCUST60	Woven Air Tube custom cushion width x 60m	XX	4pk
WATCUST90	Woven Air Tube Custom cushion width x 90m	XX	4pk

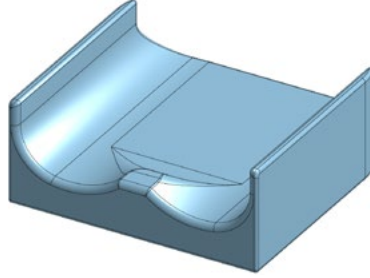
# Cushion Modifications

**CUSHION TAPERED  
SIDES MOD**



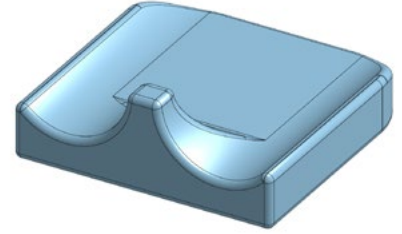
**DCMODTS**

**STX2 CUSTOM HEIGHT  
LATERAL THIGH  
SUPPORT MOD**



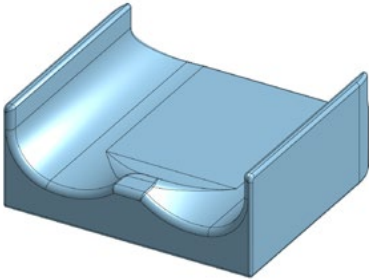
**DXCMODCL**

**STX2 CUSTOM HEIGHT  
MEDIAL THIGH  
SUPPORT MOD**



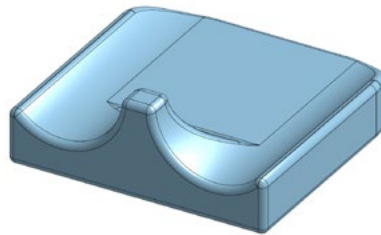
**DXCMODCP**

**CUSTOM HEIGHT  
LATERAL THIGH  
SUPPORT MOD (OTHER)**



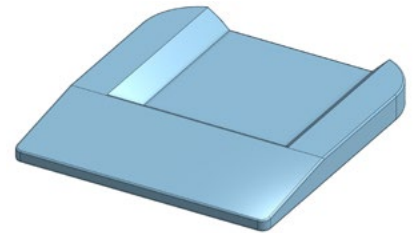
**DCMODCL**

**CUSTOM HEIGHT  
MEDIAL THIGH  
SUPPORT MOD (OTHER)**



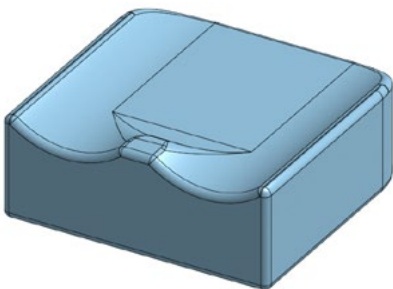
**DCMODCP**

**STX2 CUSTOM ISCHIAL  
WELL MOD**



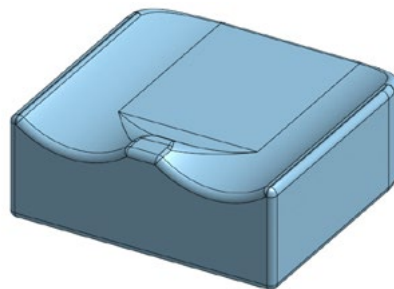
**DXCMODCIW**

**STX2 CUSTOM  
HEIGHT MOD**



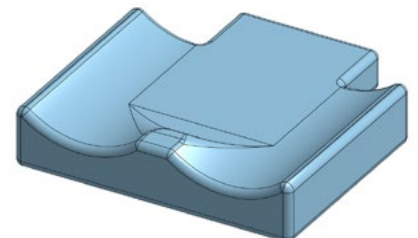
**DXCMODEH**

**CUSTOM HEIGHT  
MOD (OTHER)**



**DCMODEH**

**REAR CORNER  
CUT-OUT MOD**



**DCMODCC**

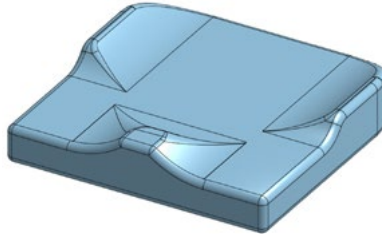
# *Cushion Modifications cont.*

**ADD FOAM  
RAMP MOD**



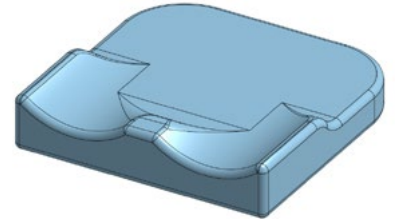
*DCMODFR*

**REMOVE CUSHION  
FRONT HALF LATERAL  
THIGH SUPPORT**



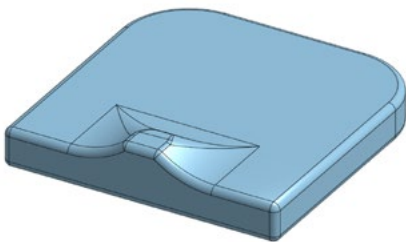
*DCMODRFL*

**REMOVE CUSHION  
REAR HALF LATERAL  
THIGH SUPPORT**



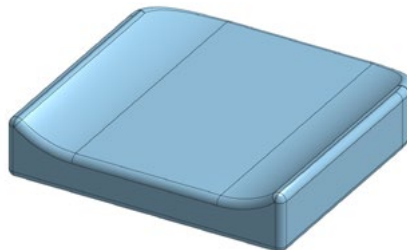
*DCMODRRL*

**REMOVE LATERAL  
CONTOURING MOD**



*DCMODRL*

**REMOVE MEDIAL THIGH  
SUPPORT CONTOURING  
MOD**



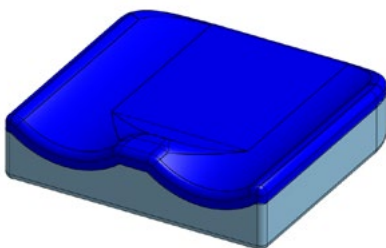
*DCMODRP*

**SUPRACOR INSERT  
MOD**



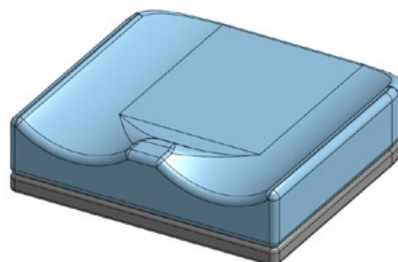
*DCMODSBS1*

**ADD 1/2" SUNMATE  
FOAM OVERLAY MOD**



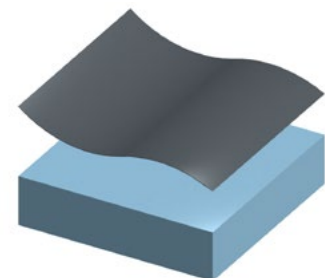
*DCMODSFO*

**ADD EXTRA FOAM FOR  
HEAVY USER MOD**



*DCMODEF*

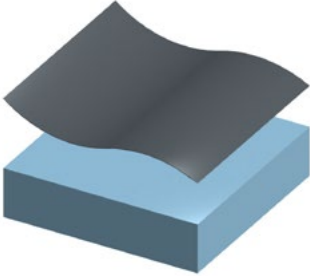
**DARTEX FABRIC  
SMOOTH MOD**



*DCMODCPU*

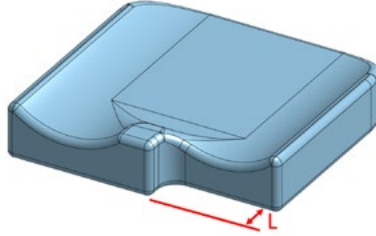
# Cushion Modifications *cont.*

**CUSTOM FABRIC MOD**  
(ORIGINAL FABRIC OR SPECIFY)



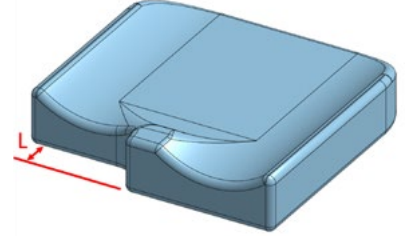
*DCMODCF*

**LEFT LEG DISCREPANCY CUT-OUT MOD**



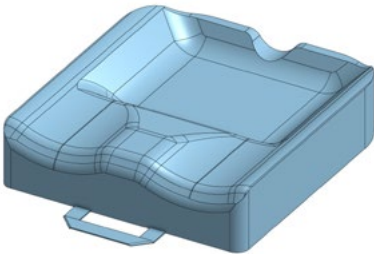
<i>DCMODLLDL1</i>	<i>DCMODLLDL2</i>
<i>DCMODLLDL3</i>	<i>DCMODLLDL4</i>
<i>DCMODLLDL5</i>	<i>DCMODLLDL6</i>

**RIGHT LEG DISCREPANCY CUT-OUT MOD**



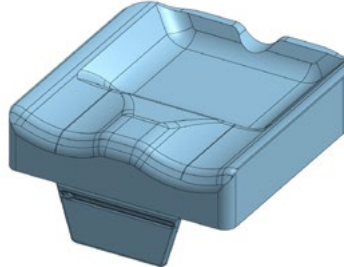
<i>DCMODLLDR1</i>	<i>DCMODLLDR2</i>
<i>DCMODLLDR3</i>	<i>DCMODLLDR4</i>
<i>DCMODLLDR5</i>	<i>DCMODLLDR6</i>

**CUSHION CUSTOM HANDLE MOD**



*DCMODH*

**CUSHION CUSTOM POUCH MOD**



*DCMODP*

# Cushion Modifications *cont.*

**COLOUR MOD**  
**- RED**



**DCMODRED**

**COLOUR MOD**  
**- BLUE**



**DCMODBLU**

**COLOUR MOD**  
**- ORANGE**



**DCMODORA**

**COLOUR MOD**  
**- GREEN**



**DCMODGRE**

**COLOUR MOD**  
**-PURPLE**



**DCMODPUR**

**COLOUR MOD**  
**- YELLOW**



**DCMODYEL**

**COLOUR MOD**  
**- SILVER**



**DCMODSIL**

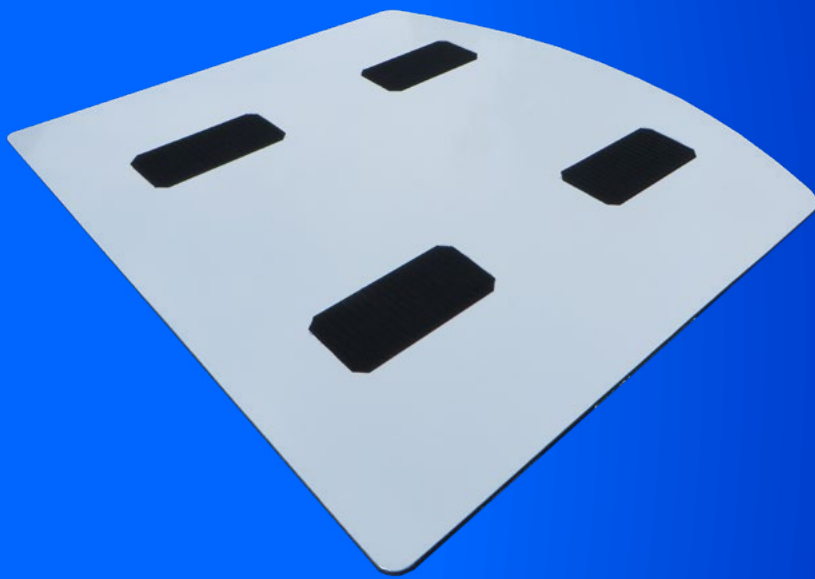
**COLOUR MOD**  
**-PINK**



**DCMODPIN**





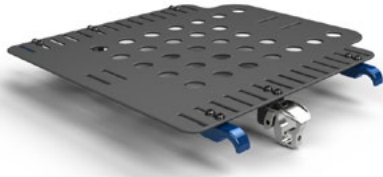


*Dreamline Code Visual Directory 2023*

# *› Seat Bases*

# Seat Bases

## QUICK-RELEASE SEAT PAN



DSP1212	DSP1214	DSP1414	DSP1416	DSP1418	DSP1616	DSP1618
DSP1620	DSP1818	DSP1820	DSP2020	DSPCUST	DSPCUSTXL	

- *Grab & Go. Intuitive lift tab & lift away release system.*
- *Dreamline quick-release Seat Pans are 5mm narrower overall than the wheelchair width.*
- *Dreamline quick-release seat pans are 15mm shorter than cushion seat depth. (Allows for cushion overhang to protect occupant from seat pan front edge.)*
- *Includes fasteners for Hip Guide / Armrest and Hip Belt attachment.*

## CUSHION RIGID BASE



DCRB0808	DCRB0810	DCRB1010	DCRB1012	DCRB1212	DCRB1214	DCRB1414
DCRB1416	DCRB1418	DCRB1616	DCRB1618	DCRB1620	DCRB1816	DCRB1818
DCRB1820	DCRB2018	DCRB2020	DCRB2218	DCRB2220	DCRB2222	DCRB2420
DCRB2422	DCRB2424	DCRBCUST	DCRBCUSTXL			

- *Cushion rigid bases are 40mm narrower overall than the cushion width. (They are designed to fit between the seat rails & tighten the upholstery.)*
- *Cushion rigid bases are 30mm smaller than cushion depth to protect the user.*

# Seat Base Accessories

## SEAT PAN UTILITY RAIL

*Fits to the Quick-release Seat Pan for easy & secure Hip-belt, Hip thigh guide & Armrest attachment.*



FITS SEAT PAN (LENGTH)	12"	14"	16" / 17"	18"	20"
CODE	DSPUR200	DSPUR250	DSPUR300	DSPUR350	DSPUR400

## SEAT PAN CLAMP KIT FOR 2ND MOBILITY BASE



DSPCKIT

## POSITIONING CLAMPS (PR)

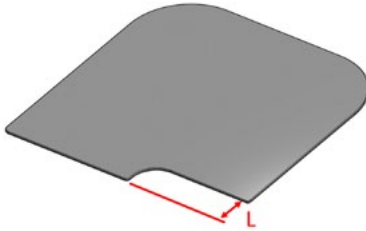


DSPCF

• Can be used for hip-belt & harness attachment

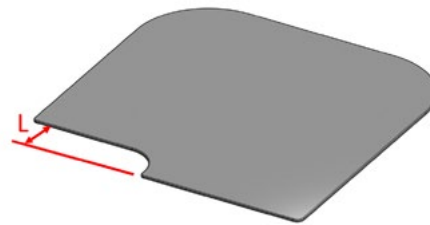
# Seat Base Modifications

**LEFT LEG LENGTH  
DISCREPANCY CUT-OUT  
MOD**



<i>DSPMODLLDL1</i>
<i>DSPMODLLDL2</i>
<i>DSPMODLLDL3</i>
<i>DSPMODLLDL4</i>
<i>DSPMODLLDL5</i>
<i>DSPMODLLDL6</i>

**RIGHT LEG LENGTH  
DISCREPANCY CUT-OUT  
MOD**



<i>DSPMODLLDR1</i>
<i>DSPMODLLDR2</i>
<i>DSPMODLLDR3</i>
<i>DSPMODLLDR4</i>
<i>DSPMODLLDR5</i>
<i>DSPMODLLDR6</i>







*Dreamline Code Visual Directory 2023*

# › *Backrests*

# **Ignite Series** *2 types*

**IGNITE (ALUMINIUM)**

**IGNITE PRO (CARBON)**



*3 contour depths for each type*

**IGNITE ACTIVE**

**IGNITE MEDIUM**

**IGNITE DEEP**



*From their comfortable pressure redistribution technology to their easy-to-use compact hardware & sporty appeal, the lightweight Ignite backrests system is a pleasure to use.*



# Attachment Options

## SHELL & PAD ONLY (NO HARDWARE)



## FIXED HARDWARE



## QUICK-RELEASE HARDWARE



### INCLUDED

#### SHELL & PAD ONLY

- Backrest Shell
- Foam Inner
- FLO2 Outer Cover
- Lumbar Pad
- Lateral Stability Wedges x 2
- Mini Lateral Stability Wedges x 2

#### FIXED

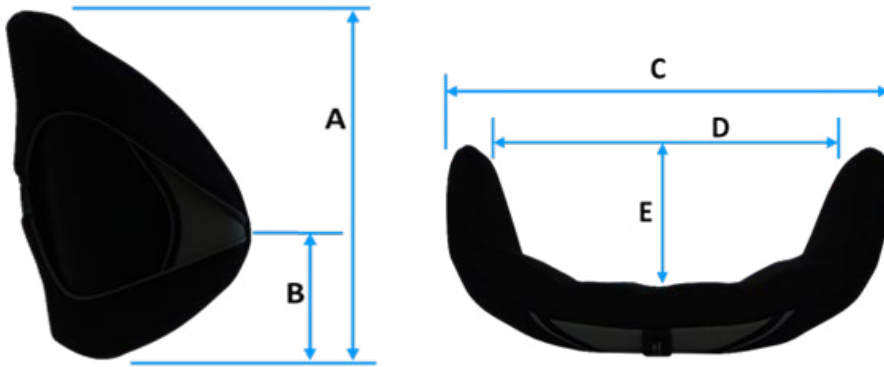
- Backrest Shell with L-brackets & clamps
- Foam Inner
- FLO2 Outer Cover
- Lumbar Pad
- Lateral Stability Wedges x 2
- Mini Lateral Stability Wedges x 2

#### QUICK-RELEASE

- Backrest Shell with L-brackets & pins
- Foam Inner
- FLO2 Outer Cover
- Lumbar Pad
- Lateral Stability Wedges x 2
- Mini Lateral Stability Wedges x 2
- Clamps (1 x Left / 1 x Right)
- Mini Pins x 4
- Pin shrouds x 2

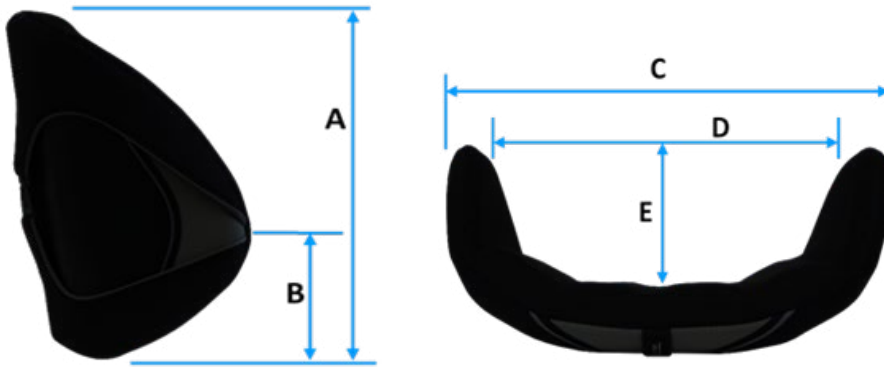
- **NOTE:** Ignite pro Mid & Deep Backrests include an extra pack of 2 M6 x 16mm coach bolts with washers & nuts for when offsetting the lateral trunk support.
- Backrests 18x18, 18x20, 20x18, 20x20 use original U2 Hardware.

## IGNITE BACKREST SHELL DIMENSIONS



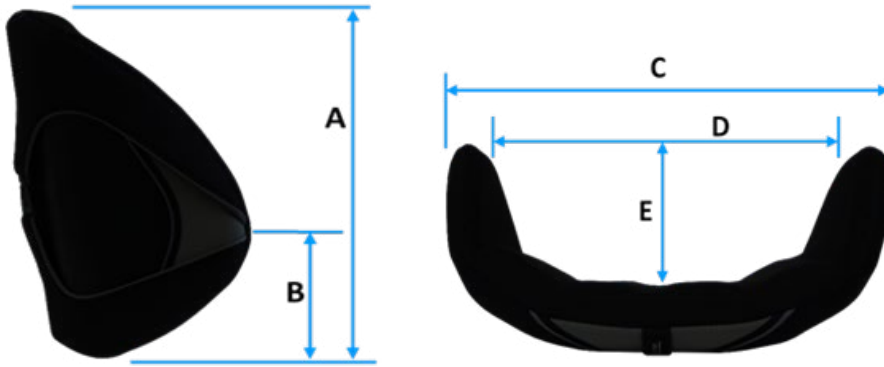
<i>CODE (QUICK-RELEASE)</i>	<i>SIZE (width x height)</i>	<i>A (backrest shell height)</i>	<i>B (Centre of Lateral Posi)</i>	<i>C (Backrest O/A width)</i>	<i>D (between laterals)</i>	<i>E (Lateral depth)</i>
<b>ACTIVE CONTOUR (ALUMINIUM)</b>						
<i>DIBA1407</i>	<i>14" x 07"</i>	<i>170mm</i>	-	<i>285mm</i>	-	<i>40mm</i>
<i>DIBA1409</i>	<i>14" x 09"</i>	<i>230mm</i>	-	<i>285mm</i>	-	<i>40mm</i>
<i>DIBA1412</i>	<i>14" x 12"</i>	<i>300mm</i>	-	<i>285mm</i>	-	<i>40mm</i>
<i>DIBA1414</i>	<i>14" x 14"</i>	<i>350mm</i>	-	<i>285mm</i>	-	<i>40mm</i>
<i>DIBA1416</i>	<i>14" x 16"</i>	<i>400mm</i>	-	<i>285mm</i>	-	<i>40mm</i>
<i>DIBA1507</i>	<i>15" x 07"</i>	<i>170mm</i>	-	<i>310mm</i>	-	<i>40mm</i>
<i>DIBA1509</i>	<i>15" x 09"</i>	<i>230mm</i>	-	<i>310mm</i>	-	<i>40mm</i>
<i>DIBA1512</i>	<i>15" x 12"</i>	<i>300mm</i>	-	<i>310mm</i>	-	<i>40mm</i>
<i>DIBA1514</i>	<i>15" x 14"</i>	<i>350mm</i>	-	<i>310mm</i>	-	<i>40mm</i>
<i>DIBA1516</i>	<i>15" x 16"</i>	<i>400mm</i>	-	<i>310mm</i>	-	<i>40mm</i>
<i>DIBA1608</i>	<i>16" x 08"</i>	<i>200mm</i>	-	<i>335mm</i>	-	<i>45mm</i>
<i>DIBA1610</i>	<i>16" x 10"</i>	<i>250mm</i>	-	<i>335mm</i>	-	<i>45mm</i>
<i>DIBA1613</i>	<i>16" x 13"</i>	<i>330mm</i>	-	<i>335mm</i>	-	<i>45mm</i>
<i>DIBA1616</i>	<i>16" x 16"</i>	<i>400mm</i>	-	<i>335mm</i>	-	<i>45mm</i>
<i>DIBA1618</i>	<i>16" x 18"</i>	<i>450mm</i>	-	<i>335mm</i>	-	<i>45mm</i>
<i>DIBA1708</i>	<i>17" x 08"</i>	<i>200mm</i>	-	<i>360mm</i>	-	<i>45mm</i>
<i>DIBA1710</i>	<i>17" x 10"</i>	<i>250mm</i>	-	<i>360mm</i>	-	<i>45mm</i>
<i>DIBA1713</i>	<i>17" x 13"</i>	<i>330mm</i>	-	<i>360mm</i>	-	<i>45mm</i>
<i>DIBA1716</i>	<i>17" x 16"</i>	<i>400mm</i>	-	<i>360mm</i>	-	<i>45mm</i>
<i>DIBA1718</i>	<i>17" x 18"</i>	<i>450mm</i>	-	<i>360mm</i>	-	<i>45mm</i>
<i>DIBA1808</i>	<i>18" x 08"</i>	<i>200mm</i>	-	<i>385mm</i>	-	<i>50mm</i>
<i>DIBA1810</i>	<i>18" x 10"</i>	<i>250mm</i>	-	<i>385mm</i>	-	<i>50mm</i>
<i>DIBA1813</i>	<i>18" x 13"</i>	<i>330mm</i>	-	<i>385mm</i>	-	<i>50mm</i>
<i>DIBA1816</i>	<i>18" x 16"</i>	<i>400mm</i>	-	<i>385mm</i>	-	<i>50mm</i>
<i>DIBA1818</i>	<i>18" x 18"</i>	<i>450mm</i>	-	<i>385mm</i>	-	<i>50mm</i>
<i>DIBA2008</i>	<i>20" x 08"</i>	<i>200mm</i>	-	<i>435mm</i>	-	<i>50mm</i>
<i>DIBA2010</i>	<i>20" x 10"</i>	<i>250mm</i>	-	<i>435mm</i>	-	<i>50mm</i>
<i>DIBA2013</i>	<i>20" x 13"</i>	<i>330mm</i>	-	<i>435mm</i>	-	<i>50mm</i>
<i>DIBA2016</i>	<i>20" x 16"</i>	<i>400mm</i>	-	<i>435mm</i>	-	<i>50mm</i>
<i>DIBA2018</i>	<i>20" x 18"</i>	<i>450mm</i>	-	<i>435mm</i>	-	<i>50mm</i>
<i>DIBACUST</i>	<i>XXXX</i>	<i>XXXX</i>	<i>Proportional</i>	<i>XXXX</i>	<i>XXXX</i>	<i>Proportional</i>
<i>DIBACUSTXL</i>	<i>XXXX</i>	<i>XXXX</i>	<i>Proportional</i>	<i>XXXX</i>	<i>XXXX</i>	<i>Proportional</i>

## IGNITE BACKREST SHELL DIMENSIONS



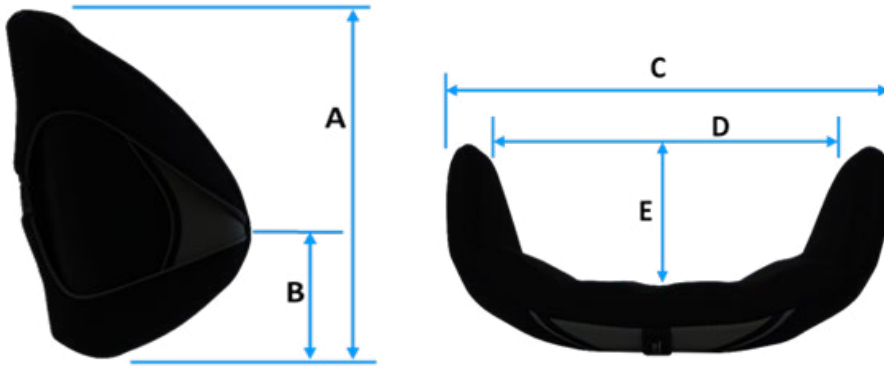
<i>CODE (QUICK-RELEASE)</i>	<i>SIZE (width x height)</i>	<i>A (backrest shell height)</i>	<i>B (Centre of Lateral Posi)</i>	<i>C (Backrest O/A width)</i>	<i>D (between laterals)</i>	<i>E (Lateral depth)</i>
<b>MID CONTOUR (ALUMINIUM)</b>						
<i>DIBM1407</i>	<i>14" x 07"</i>	<i>170mm</i>	<i>80mm</i>	<i>340mm</i>	<i>295mm</i>	<i>85mm</i>
<i>DIBM1409</i>	<i>14" x 09"</i>	<i>230mm</i>	<i>90mm</i>	<i>340mm</i>	<i>295mm</i>	<i>85mm</i>
<i>DIBM1412</i>	<i>14" x 12"</i>	<i>300mm</i>	<i>115mm</i>	<i>340mm</i>	<i>295mm</i>	<i>85mm</i>
<i>DIBM1414</i>	<i>14" x 14"</i>	<i>350mm</i>	<i>145mm</i>	<i>340mm</i>	<i>295mm</i>	<i>85mm</i>
<i>DIBM1416</i>	<i>14" x 16"</i>	<i>400mm</i>	<i>170mm</i>	<i>340mm</i>	<i>295mm</i>	<i>85mm</i>
<i>DIBM1507</i>	<i>15" x 07"</i>	<i>170mm</i>	<i>80mm</i>	<i>360mm</i>	<i>315mm</i>	<i>85mm</i>
<i>DIBM1509</i>	<i>15" x 09"</i>	<i>230mm</i>	<i>90mm</i>	<i>360mm</i>	<i>315mm</i>	<i>85mm</i>
<i>DIBM1512</i>	<i>15" x 12"</i>	<i>300mm</i>	<i>115mm</i>	<i>360mm</i>	<i>315mm</i>	<i>85mm</i>
<i>DIBM1514</i>	<i>15" x 14"</i>	<i>350mm</i>	<i>145mm</i>	<i>360mm</i>	<i>315mm</i>	<i>85mm</i>
<i>DIBM1516</i>	<i>15" x 16"</i>	<i>400mm</i>	<i>170mm</i>	<i>360mm</i>	<i>315mm</i>	<i>85mm</i>
<i>DIBM1608</i>	<i>16" x 08"</i>	<i>200mm</i>	<i>90mm</i>	<i>390mm</i>	<i>345mm</i>	<i>100mm</i>
<i>DIBM1610</i>	<i>16" x 10"</i>	<i>250mm</i>	<i>96mm</i>	<i>390mm</i>	<i>345mm</i>	<i>100mm</i>
<i>DIBM1613</i>	<i>16" x 13"</i>	<i>330mm</i>	<i>120mm</i>	<i>390mm</i>	<i>345mm</i>	<i>100mm</i>
<i>DIBM1616</i>	<i>16" x 16"</i>	<i>400mm</i>	<i>165mm</i>	<i>390mm</i>	<i>345mm</i>	<i>100mm</i>
<i>DIBM1618</i>	<i>16" x 18"</i>	<i>450mm</i>	<i>195mm</i>	<i>390mm</i>	<i>345mm</i>	<i>100mm</i>
<i>DIBM1708</i>	<i>17" x 08"</i>	<i>200mm</i>	<i>90mm</i>	<i>415mm</i>	<i>370mm</i>	<i>100mm</i>
<i>DIBM1710</i>	<i>17" x 10"</i>	<i>250mm</i>	<i>96mm</i>	<i>415mm</i>	<i>370mm</i>	<i>100mm</i>
<i>DIBM1713</i>	<i>17" x 13"</i>	<i>330mm</i>	<i>120mm</i>	<i>415mm</i>	<i>370mm</i>	<i>100mm</i>
<i>DIBM1716</i>	<i>17" x 16"</i>	<i>400mm</i>	<i>165mm</i>	<i>415mm</i>	<i>370mm</i>	<i>100mm</i>
<i>DIBM1718</i>	<i>17" x 18"</i>	<i>450mm</i>	<i>195mm</i>	<i>415mm</i>	<i>370mm</i>	<i>100mm</i>
<i>DIBM1808</i>	<i>18" x 08"</i>	<i>200mm</i>	<i>90mm</i>	<i>440mm</i>	<i>395mm</i>	<i>100mm</i>
<i>DIBM1810</i>	<i>18" x 10"</i>	<i>250mm</i>	<i>96mm</i>	<i>440mm</i>	<i>395mm</i>	<i>100mm</i>
<i>DIBM1813</i>	<i>18" x 13"</i>	<i>330mm</i>	<i>120mm</i>	<i>440mm</i>	<i>395mm</i>	<i>100mm</i>
<i>DIBM1816</i>	<i>18" x 16"</i>	<i>400mm</i>	<i>165mm</i>	<i>440mm</i>	<i>395mm</i>	<i>100mm</i>
<i>DIBM1818</i>	<i>18" x 18"</i>	<i>450mm</i>	<i>195mm</i>	<i>440mm</i>	<i>395mm</i>	<i>100mm</i>
<i>DIBM2008</i>	<i>20" x 08"</i>	<i>200mm</i>	<i>90mm</i>	<i>490mm</i>	<i>445mm</i>	<i>100mm</i>
<i>DIBM2010</i>	<i>20" x 10"</i>	<i>250mm</i>	<i>96mm</i>	<i>490mm</i>	<i>445mm</i>	<i>100mm</i>
<i>DIBM2013</i>	<i>20" x 13"</i>	<i>330mm</i>	<i>120mm</i>	<i>490mm</i>	<i>445mm</i>	<i>100mm</i>
<i>DIBM2016</i>	<i>20" x 16"</i>	<i>400mm</i>	<i>165mm</i>	<i>490mm</i>	<i>445mm</i>	<i>100mm</i>
<i>DIBM2018</i>	<i>20" x 18"</i>	<i>450mm</i>	<i>195mm</i>	<i>490mm</i>	<i>445mm</i>	<i>100mm</i>
<i>DIBM CUST</i>	<i>XXXX</i>	<i>XXXX</i>	<i>Proportional</i>	<i>XXXX</i>	<i>XXXX</i>	<i>Proportional</i>
<i>DIBM CUSTXL</i>	<i>XXXX</i>	<i>XXXX</i>	<i>Proportional</i>	<i>XXXX</i>	<i>XXXX</i>	<i>Proportional</i>

## IGNITE BACKREST SHELL DIMENSIONS



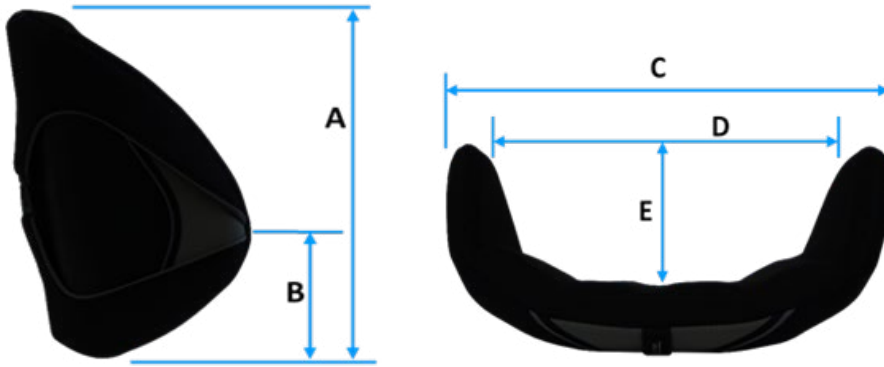
CODE (QUICK-RELEASE)	SIZE (width x height)	A (backrest shell height)	B (Centre of Lateral Posi)	C (Backrest O/A width)	D (between laterals)	E (Lateral depth)
<b>DEEP CONTOUR (ALUMINIUM)</b>						
DIBD1412	14" x 12"	300mm	120mm	340mm	295mm	130mm
DIBD1414	14" x 14"	350mm	135mm	340mm	295mm	130mm
DIBD1416	14" x 16"	400mm	170mm	340mm	295mm	130mm
DIBD1418	14" x 18"	450mm	195mm	340mm	295mm	130mm
DIBD1512	15" x 12"	300mm	120mm	360mm	315mm	130mm
DIBD1514	15" x 14"	350mm	135mm	360mm	315mm	130mm
DIBD1516	15" x 16"	400mm	170mm	360mm	315mm	130mm
DIBD1518	15" x 18"	450mm	195mm	360mm	315mm	130mm
DIBD1613	16" x 13"	330mm	140mm	390mm	345mm	150mm
DIBD1616	16" x 16"	400mm	155mm	390mm	345mm	150mm
DIBD1618	16" x 18"	450mm	195mm	390mm	345mm	150mm
DIBD1620	16" x 20"	500mm	230mm	390mm	345mm	150mm
DIBD1713	17" x 13"	330mm	140mm	415mm	370mm	150mm
DIBD1716	17" x 16"	400mm	155mm	415mm	370mm	150mm
DIBD1718	17" x 18"	450mm	195mm	415mm	370mm	150mm
DIBD1720	17" x 20"	500mm	230mm	415mm	370mm	150mm
DIBD1813	18" x 13"	330mm	140mm	440mm	395mm	150mm
DIBD1816	18" x 16"	400mm	155mm	440mm	395mm	150mm
DIBD1818	18" x 18"	450mm	195mm	440mm	395mm	150mm
DIBD1820	18" x 20"	500mm	230mm	440mm	395mm	150mm
DIBD2013	20" x 13"	330mm	140mm	490mm	445mm	150mm
DIBD2016	20" x 16"	400mm	155mm	490mm	445mm	150mm
DIBD2018	20" x 18"	450mm	195mm	490mm	445mm	150mm
DIBD2020	20" x 20"	500mm	230mm	490mm	445mm	150mm
DIBDCUST	XXXX	XXXX	Proportional	XXXX	XXXX	Proportional
DIBDCUSTXL	XXXX	XXXX	Proportional	XXXX	XXXX	Proportional

## IGNITE BACKREST SHELL DIMENSIONS



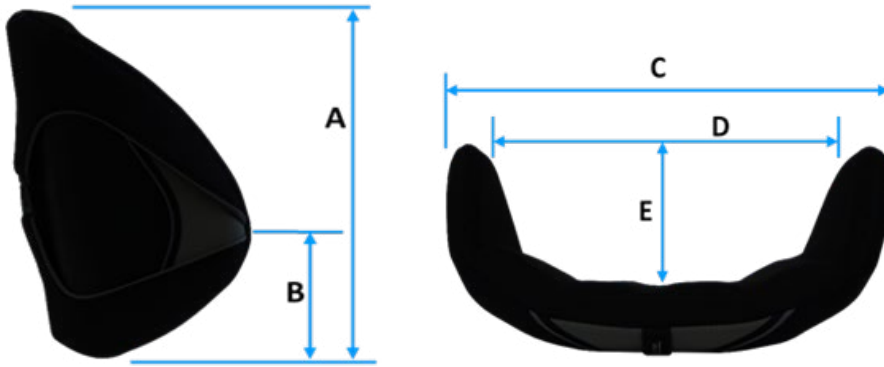
<i>CODE (QUICK-RELEASE)</i>	<i>SIZE (width x height)</i>	<i>A (backrest shell height)</i>	<i>B (Centre of Lateral Posi)</i>	<i>C (Backrest O/A width)</i>	<i>D (between laterals)</i>	<i>E (Lateral depth)</i>
<b>PRO ACTIVE CONTOUR (CARBON)</b>						
<i>DPBA1407</i>	<i>14" x 07"</i>	<i>170mm</i>	-	<i>285mm</i>	-	<i>40mm</i>
<i>DPBA1409</i>	<i>14" x 09"</i>	<i>230mm</i>	-	<i>285mm</i>	-	<i>40mm</i>
<i>DPBA1412</i>	<i>14" x 12"</i>	<i>300mm</i>	-	<i>285mm</i>	-	<i>40mm</i>
<i>DPBA1507</i>	<i>15" x 07"</i>	<i>170mm</i>	-	<i>310mm</i>	-	<i>40mm</i>
<i>DPBA1509</i>	<i>15" x 09"</i>	<i>230mm</i>	-	<i>310mm</i>	-	<i>40mm</i>
<i>DPBA1512</i>	<i>15" x 12"</i>	<i>300mm</i>	-	<i>310mm</i>	-	<i>40mm</i>
<i>DPBA1608</i>	<i>16" x 08"</i>	<i>200mm</i>	-	<i>335mm</i>	-	<i>45mm</i>
<i>DPBA1610</i>	<i>16" x 10"</i>	<i>250mm</i>	-	<i>335mm</i>	-	<i>45mm</i>
<i>DPBA1613</i>	<i>16" x 13"</i>	<i>330mm</i>	-	<i>335mm</i>	-	<i>45mm</i>
<i>DPBA1708</i>	<i>17" x 08"</i>	<i>200mm</i>	-	<i>360mm</i>	-	<i>45mm</i>
<i>DPBA1710</i>	<i>17" x 10"</i>	<i>250mm</i>	-	<i>360mm</i>	-	<i>45mm</i>
<i>DPBA1713</i>	<i>17" x 13"</i>	<i>330mm</i>	-	<i>360mm</i>	-	<i>45mm</i>
<i>DPBA1808</i>	<i>18" x 08"</i>	<i>200mm</i>	-	<i>385mm</i>	-	<i>50mm</i>
<i>DPBA1810</i>	<i>18" x 10"</i>	<i>250mm</i>	-	<i>385mm</i>	-	<i>50mm</i>
<i>DPBA1813</i>	<i>18" x 13"</i>	<i>330mm</i>	-	<i>385mm</i>	-	<i>50mm</i>
<i>DPBA2008</i>	<i>20" x 08"</i>	<i>200mm</i>	-	<i>435mm</i>	-	<i>50mm</i>
<i>DPBA2010</i>	<i>20" x 10"</i>	<i>250mm</i>	-	<i>435mm</i>	-	<i>50mm</i>
<i>DPBA2013</i>	<i>20" x 13"</i>	<i>330mm</i>	-	<i>435mm</i>	-	<i>50mm</i>
<i>DPBACUST</i>	<i>XXXX</i>	<i>XXXX</i>	-	<i>XXXX</i>	<i>XXXX</i>	<i>60mm</i>
<i>DPBACUSTXL</i>	<i>XXXX</i>	<i>XXXX</i>	-	<i>XXXX</i>	<i>XXXX</i>	<i>60mm</i>

## IGNITE BACKREST SHELL DIMENSIONS



<i>CODE (QUICK-RELEASE)</i>	<i>SIZE (width x height)</i>	<i>A (backrest shell height)</i>	<i>B (Centre of Lateral Posi)</i>	<i>C (Backrest O/A width)</i>	<i>D (between laterals)</i>	<i>E (Lateral depth)</i>
<b>PRO MID CONTOUR (CARBON) • ADJUSTABLE BY 2"</b>						
<i>DPBM1407</i>	<i>14" x 07"</i>	<i>170mm</i>	<i>80mm</i>	<i>340mm</i>	<i>295mm</i>	<i>85mm</i>
<i>DPBM1409</i>	<i>14" x 09"</i>	<i>230mm</i>	<i>90mm</i>	<i>340mm</i>	<i>295mm</i>	<i>85mm</i>
<i>DPBM1412</i>	<i>14" x 12"</i>	<i>300mm</i>	<i>115mm</i>	<i>340mm</i>	<i>295mm</i>	<i>85mm</i>
<i>DPBM1507</i>	<i>15" x 07"</i>	<i>170mm</i>	<i>80mm</i>	<i>360mm</i>	<i>315mm</i>	<i>85mm</i>
<i>DPBM1509</i>	<i>15" x 09"</i>	<i>230mm</i>	<i>90mm</i>	<i>360mm</i>	<i>315mm</i>	<i>85mm</i>
<i>DPBM1512</i>	<i>15" x 12"</i>	<i>300mm</i>	<i>115mm</i>	<i>360mm</i>	<i>315mm</i>	<i>85mm</i>
<i>DPBM1608</i>	<i>16" x 08"</i>	<i>200mm</i>	<i>90mm</i>	<i>390mm</i>	<i>345mm</i>	<i>100mm</i>
<i>DPBM1610</i>	<i>16" x 10"</i>	<i>250mm</i>	<i>96mm</i>	<i>390mm</i>	<i>345mm</i>	<i>100mm</i>
<i>DPBM1613</i>	<i>16" x 13"</i>	<i>330mm</i>	<i>120mm</i>	<i>390mm</i>	<i>345mm</i>	<i>100mm</i>
<i>DPBM1708</i>	<i>17" x 08"</i>	<i>200mm</i>	<i>90mm</i>	<i>415mm</i>	<i>370mm</i>	<i>100mm</i>
<i>DPBM1710</i>	<i>17" x 10"</i>	<i>250mm</i>	<i>96mm</i>	<i>415mm</i>	<i>370mm</i>	<i>100mm</i>
<i>DPBM1713</i>	<i>17" x 13"</i>	<i>330mm</i>	<i>120mm</i>	<i>415mm</i>	<i>370mm</i>	<i>100mm</i>
<i>DPBM1808</i>	<i>18" x 08"</i>	<i>200mm</i>	<i>90mm</i>	<i>440mm</i>	<i>395mm</i>	<i>100mm</i>
<i>DPBM1810</i>	<i>18" x 10"</i>	<i>250mm</i>	<i>96mm</i>	<i>440mm</i>	<i>395mm</i>	<i>100mm</i>
<i>DPBM1813</i>	<i>18" x 13"</i>	<i>330mm</i>	<i>120mm</i>	<i>440mm</i>	<i>395mm</i>	<i>100mm</i>
<i>DPBM2008</i>	<i>20" x 08"</i>	<i>200mm</i>	<i>90mm</i>	<i>490mm</i>	<i>445mm</i>	<i>100mm</i>
<i>DPBM2010</i>	<i>20" x 10"</i>	<i>250mm</i>	<i>96mm</i>	<i>490mm</i>	<i>445mm</i>	<i>100mm</i>
<i>DPBM2013</i>	<i>20" x 13"</i>	<i>330mm</i>	<i>120mm</i>	<i>490mm</i>	<i>445mm</i>	<i>100mm</i>
<i>DPBMCUST</i>	<i>XXXX</i>	<i>XXXX</i>	<i>ADJUSTABLE</i>	<i>XXXX</i>	<i>ADJUSTABLE</i>	<i>100mm</i>
<i>DPBMCUSTXL</i>	<i>XXXX</i>	<i>XXXX</i>	<i>ADJUSTABLE</i>	<i>XXXX</i>	<i>ADJUSTABLE</i>	<i>100mm</i>

## IGNITE BACKREST SHELL DIMENSIONS



<i>CODE (QUICK-RELEASE)</i>	<i>SIZE (width x height)</i>	<i>A (backrest shell height)</i>	<i>B (Centre of Lateral Posi)</i>	<i>C (Backrest O/A width)</i>	<i>D (between laterals)</i>	<i>E (Lateral depth)</i>
<b>PRO DEEP CONTOUR (CARBON) *ADJUSTABLE BY 2"</b>						
<i>DPBD1409</i>	<i>14" x 09"</i>	<i>230mm</i>	<i>90mm</i>	<i>340mm</i>	<i>295mm</i>	<i>130mm</i>
<i>DPBD1412</i>	<i>14" x 12"</i>	<i>300mm</i>	<i>115mm</i>	<i>340mm</i>	<i>295mm</i>	<i>130mm</i>
<i>DPBD1509</i>	<i>15" x 09"</i>	<i>230mm</i>	<i>90mm</i>	<i>360mm</i>	<i>315mm</i>	<i>130mm</i>
<i>DPBD1512</i>	<i>15" x 12"</i>	<i>300mm</i>	<i>115mm</i>	<i>360mm</i>	<i>315mm</i>	<i>130mm</i>
<i>DPBD1610</i>	<i>16" x 10"</i>	<i>250mm</i>	<i>96mm</i>	<i>390mm</i>	<i>345mm</i>	<i>130mm</i>
<i>DPBD1613</i>	<i>16" x 13"</i>	<i>330mm</i>	<i>120mm</i>	<i>390mm</i>	<i>345mm</i>	<i>150mm</i>
<i>DPBD1710</i>	<i>17" x 10"</i>	<i>250mm</i>	<i>96mm</i>	<i>415mm</i>	<i>370mm</i>	<i>150mm</i>
<i>DPBD1713</i>	<i>17" x 13"</i>	<i>330mm</i>	<i>120mm</i>	<i>415mm</i>	<i>370mm</i>	<i>150mm</i>
<i>DPBD1810</i>	<i>18" x 10"</i>	<i>250mm</i>	<i>96mm</i>	<i>440mm</i>	<i>395mm</i>	<i>150mm</i>
<i>DPBD1813</i>	<i>18" x 13"</i>	<i>330mm</i>	<i>120mm</i>	<i>440mm</i>	<i>395mm</i>	<i>150mm</i>
<i>DPBD2010</i>	<i>20" x 10"</i>	<i>250mm</i>	<i>96mm</i>	<i>490mm</i>	<i>445mm</i>	<i>150mm</i>
<i>DPBD2013</i>	<i>20" x 13"</i>	<i>330mm</i>	<i>120mm</i>	<i>490mm</i>	<i>445mm</i>	<i>150mm</i>
<i>DPBDCUST</i>	<i>XXXX</i>	<i>XXXX</i>	<i>ADJUSTABLE</i>	<i>XXXX</i>	<i>ADJUSTABLE</i>	<i>150mm</i>
<i>DPBDCUSTXL</i>	<i>XXXX</i>	<i>XXXX</i>	<i>ADJUSTABLE</i>	<i>XXXX</i>	<i>ADJUSTABLE</i>	<i>150mm</i>

*Outer Cover only add "OC" to end of code • Inner Cover only add "IC" to end of code  
Shell & Pad only add "SP" to end of code • Foam & Cover only add "FC" to end of code  
Shell only add "SL" to end of code*

**IGNITE ACTIVE  
(FIXED - ALUMINIUM)**



DIBAF1407	DIBAF1409	DIBAF1412	DIBAF1414	DIBAF1416	DIBAF1507	DIBAF1509	DIBAF1512
DIBAF1514	DIBAF1516	DIBAF1608	DIBAF1610	DIBAF1613	DIBAF1616	DIBAF1618	DIBAF1708
DIBAF1710	DIBAF1713	DIBAF1716	DIBAF1718	DIBAF1808	DIBAF1810	DIBAF1813	DIBAF1816
DIBAF1818	DIBAF2008	DIBAF2010	DIBAF2013	DIBAF2016	DIBAF2018	DIBAFFCUST	DIBAFFCUSTXL

• These backrests use the same spare covers as the Ignite quick- release options

**IGNITE MID  
(FIXED - ALUMINIUM)**



DIBMF1407	DIBMF1409	DIBMF1412	DIBMF1414	DIBMF1416	DIBMF1507	DIBMF1509	DIBMF1512
DIBMF1514	DIBMF1516	DIBMF1608	DIBMF1610	DIBMF1613	DIBMF1616	DIBMF1618	DIBMF1708
DIBMF1710	DIBMF1713	DIBMF1716	DIBMF1718	DIBMF1808	DIBMF1810	DIBMF1813	DIBMF1816
DIBMF1818	DIBMF2008	DIBMF2010	DIBMF2013	DIBMF2016	DIBMF2018	DIBMFCUST	DIBMFCUSTXL

• These backrests use the same spare covers as the Ignite quick- release options

**IGNITE DEEP  
(FIXED - ALUMINIUM)**



DIBDF1412	DIBDF1414	DIBDF1416	DIBDF1418	DIBDF1512	DIBDF1514	DIBDF1516	DIBDF1518
DIBDF1613	DIBDF1616	DIBDF1618	DIBDF1620	DIBDF1713	DIBDF1716	DIBDF1718	DIBDF1720
DIBDF1813	DIBDF1816	DIBDF1818	DIBDF1820	DIBDF2013	DIBDF2016	DIBDF2018	DIBDF2020
DIBDFCUST	DIBDFCUSTXL						

• These backrests use the same spare covers as the Ignite quick- release options



**IGNITE PRO ACTIVE  
(FIXED - CARBON)**



DPBAF1407	DPBAF1409	DPBAF1412	DPBAF1507	DPBAF1509	DPBAF1512	DPBAF1608	DPBAF1610
DPBAF1613	DPBAF1708	DPBAF1710	DPBAF1713	DPBAF1808	DPBAF1810	DPBAF1813	DPBAF2008
DPBAF2010	DPBAF2013	DPBAFCUST	DPBAFCUSTXL				

• These backrests use the same spare covers as the Ignite quick- release options

**IGNITE PRO MID  
(FIXED - CARBON)**



DPBMF1407	DPBMF1409	DPBMF1412	DPBMF1507	DPBMF1509	DPBMF1512	DPBMF1608	DPBMF1610
DPBMF1613	DPBMF1708	DPBMF1710	DPBMF1713	DPBMF1808	DPBMF1810	DPBMF1813	DPBMF2008
DPBMF2010	DPBMF2013	DPBMFCUST	DPBMFCUSTXL				

• These backrests use the same spare covers as the Ignite quick- release options

**IGNITE PRO DEEP  
(FIXED - CARBON)**



DPBDF1409	DPBDF1412	DPBDF1509	DPBDF1512	DPBDF1610	DPBDF1613	DPBDF1710	DPBDF1713
DPBDF1810	DPBDF1813	DPBDF2010	DPBDF2013	DPBDFCUST	DPBDFCUSTXL		

• These backrests use the same spare covers as the Ignite quick- release options

# Dreamline Contour Backrest



The Dreamline Contour Backrest has a one piece shell with a deep contour profile. The laterals are positioned lower to enable clearance for unrestricted arm movement. Multiple hole positions for easy mounting of headrests, harnesses etc.

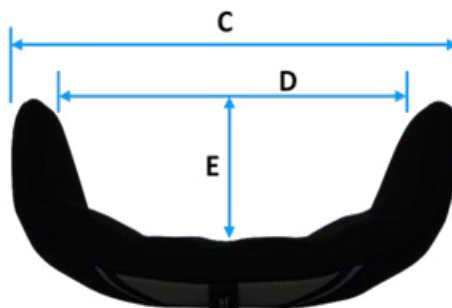
## INCLUDED

### FIXED

- Backrest Shell with L-brackets & clamps
- Foam Inner
- FLO2 Outer Cover
- Lumbar Pad
- Lateral Stability Wedges x 2
- Tool kit including, a 10mm spanner, multi-tool & a pack of 6 screws

### QUICK-RELEASE

- Backrest Shell with L-brackets & pins
- Foam Inner
- FLO2 Outer Cover
- Lumbar Pad
- Lateral Stability Wedges x 2
- Mini Lateral Stability Wedges x 2
- Tool kit including clamps (1 x Left / 1 x Right), 10mm spanner, multi-tool & a pack of 6 screws



BACKREST WIDTH	8" (203mm)	10" (254mm)	12" (305mm)	14" (355mm)	16" (406mm)	17" (432mm)	18" (457mm)	20" (508mm)
C	180mm	230mm	280mm	330mm	380mm	405mm	430mm	480mm
D	140mm	190mm	230mm	280mm	330mm	455mm	380mm	430mm
E	110mm	115mm	120mm	125mm	140mm	145mm	150mm	155mm

**DREAMLINE CONTOUR  
BACKREST (FIXED)**



DCBF0810	DCBF0812	DCBF1012	DCBF1014	DCBF1214	DCBF1216	DCBF1218	DIBDF1518
DCBF1414	DCBF1416	DCBF1418	DCBF1420	DCBF1616	DCBF1618	DCBF1620	DIBDF1720
DCBF1622	DCBF1816	DCBF1818	DCBF1820	DCBF1822	DCBF2018	DCBF2020	DIBDF2020
DCBF2022	DCBFCUST	DCBFCUSTXL					

• Uses the same outer & inner covers as the Contour quick-release backrest

**DREAMLINE CONTOUR  
BACKREST  
(QUICK-RELEASE)**



DCB0810	DCB0812	DCB1012	DCB1014	DCB1214	DCB1216	DCB1218	DIBDF1518
DCB1414	DCB1416	DCB1418	DCB1420	DCB1616	DCB1618	DCB1620	DIBDF1720
DCB1622	DCB1816	DCB1818	DCB1820	DCB1822	DCB2018	DCB2020	DIBDF2020
DCB2022	DCBCUST	DCBCUSTXL					

Outer Cover only add "OC" to end of code • Inner Cover only add "IC" to end of code  
Shell & Pad only add "SP" to end of code • Foam & Cover only add "FC" to end of code  
Shell only add "SL" to end of code

# Dreamline Support Backrest Series



*Backrest Reinforcement plates ensure robust lateral & backrest bracketry attachment.*

- Fitted to all Dreamline Support Backrests from 14"x18" & up.

*The Dreamline Support Series is a supportive rectangular backrest to which laterals, headrests, harnesses etc can be attached. The backrest has upgrade options to accommodate advanced asymmetrical postures.*

## *Backrest pad options in the Dreamline Support series*

### **SUPPORT**



*With the cover removed showing the unique Bubble Contour slim comfortable pad.*

*Add the BAC system for asymmetrical contours.*

### **S3**



*With the cover removed exposing the soft deep foam enabling immersion, great for low-tone users.*

*Add the BAC system for asymmetrical contours.*

### **STX**



*Contains multiple Visco-elastic Sunmate foam pillows which can be rearranged for asymmetrical postures.*

# Dreamline Support Backrest Series *cont.*



## INCLUDED IN THE KIT

### FIXED

- Backrest Shell with L-brackets & clamps
- Foam Inner
- FLO2 Outer Cover
- Lumbar Pad
- Lateral Stability Wedges x 2
- Tool kit including, a 10mm spanner, multi-tool, & a pack of 6 screws

### QUICK-RELEASE

- Backrest Shell with L-brackets & pins
- Foam Inner
- FLO2 Outer Cover
- Lumbar Pad
- Lateral Stability Wedges x 2
- Mini Lateral Stability Wedges x 2
- Tool kit including clamps (1 x Left / 1 x Right), 10mm spanner, multi-tool & a pack of 6 screws

## SUPPORT SERIES BACKREST SHELL WIDTHS

WHEELCHAIR WIDTH	8" (203mm)	10" (254mm)	12" (305mm)	14" (355mm)	16" (406mm)	18" (457mm)	20" (508mm)
ACTUAL SHELL WIDTH	135mm	185mm	230mm	275mm	335mm	375mm	425mm

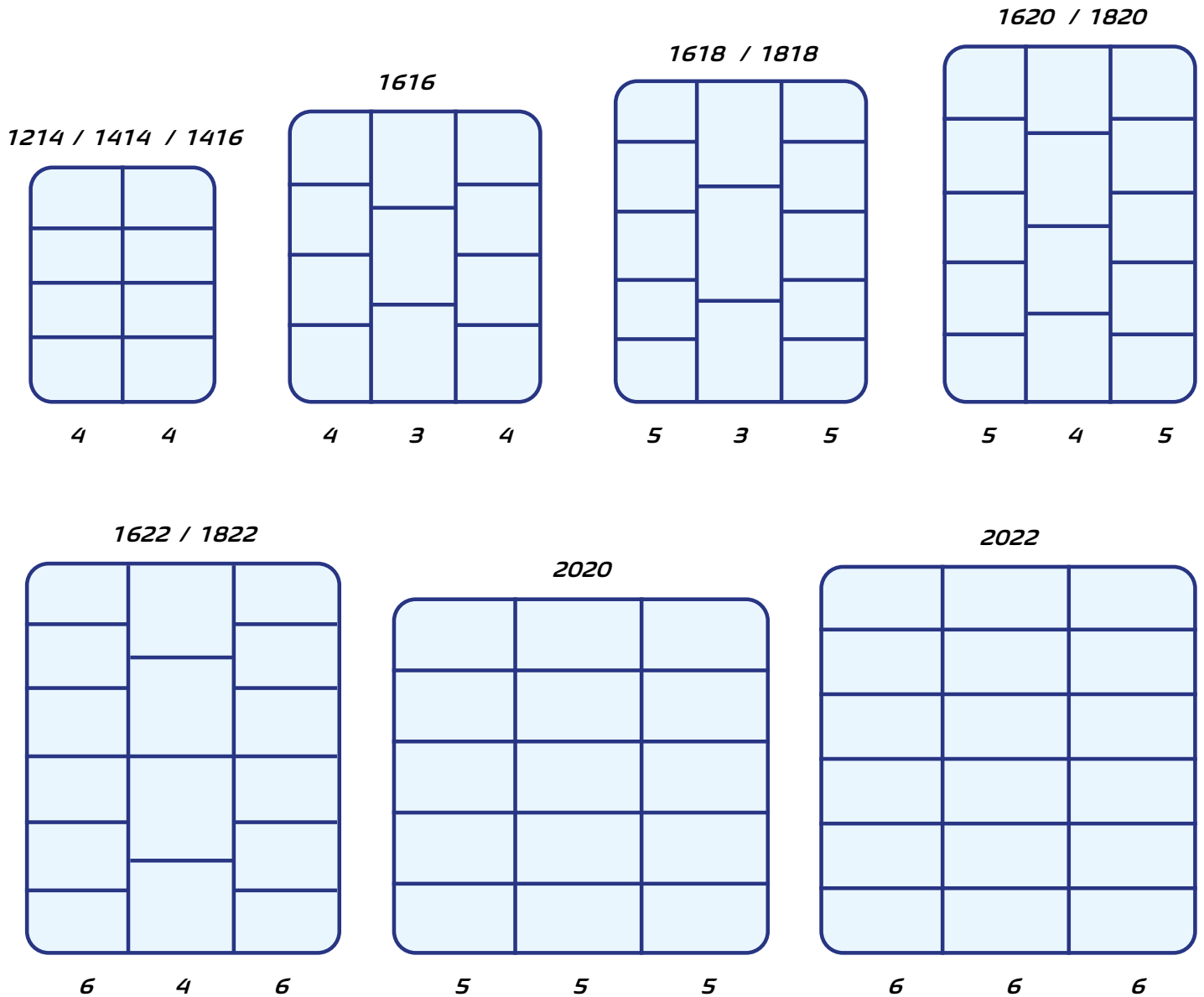
- Note: The Dreamline Support Backrest Series (Support, S3, STX) are designed to fit between the wheelchair backrest canes.

# Dreamline STX Backrest Pillow Layout

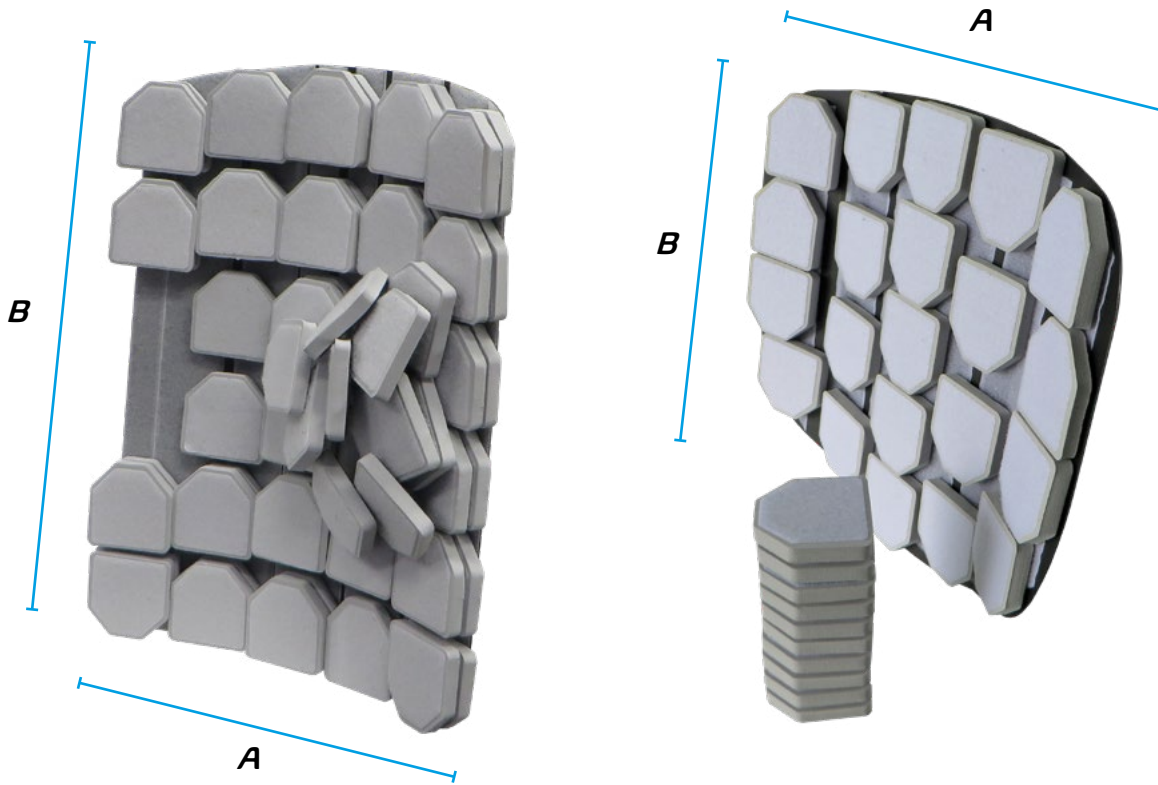


The Dreamline STX Backrest has a single layer of Sunmate foam cluster pillows with their quantities & layout pattern shown below.

Each Backrest also includes an extra pack of 4 Cluster pillows.



# ***BAC System***



*The BAC (Backrest Advanced Contour) System adds the capability to any Ignite, Support, S3 or STX Backrest to accommodate asymmetrical postures. The rigid BAC Shell easily inserts or removes from behind the backrest foam inner inside the backrest cover as a cassette to which the pads can be reconfigured to suit the user.*





## **BAC PADS LAYOUT (IGNITE SERIES BACKRESTS)**

<b>CODE</b>	<b>BACKREST SIZE</b>	<b>A (# OF PADS)</b>	<b>B (# OF PADS)</b>	<b># OF LAYERS</b>
<i>DBACIB1407</i>	<i>14" x 07"</i>	<i>4</i>	<i>3</i>	<i>1</i>
<i>DBACIB1409</i>	<i>14" x 09"</i>	<i>4</i>	<i>3</i>	<i>1</i>
<i>DBACIB1412</i>	<i>14" x 12"</i>	<i>4</i>	<i>4</i>	<i>1</i>
<i>DBACIB1414</i>	<i>14" x 14"</i>	<i>4</i>	<i>5</i>	<i>1</i>
<i>DBACIB1416</i>	<i>14" x 16"</i>	<i>4</i>	<i>5</i>	<i>1</i>
<i>DBACIB1418</i>	<i>14" x 18"</i>	<i>4</i>	<i>6</i>	<i>1</i>
<i>DBACIB1507</i>	<i>15" x 07"</i>	<i>4</i>	<i>3</i>	<i>1</i>
<i>DBACIB1509</i>	<i>15" x 09"</i>	<i>4</i>	<i>3</i>	<i>1</i>
<i>DBACIB1512</i>	<i>15" x 12"</i>	<i>4</i>	<i>4</i>	<i>1</i>
<i>DBACIB1514</i>	<i>15" x 14"</i>	<i>4</i>	<i>5</i>	<i>1</i>
<i>DBACIB1516</i>	<i>15" x 16"</i>	<i>4</i>	<i>5</i>	<i>1</i>
<i>DBACIB1518</i>	<i>15" x 18"</i>	<i>4</i>	<i>7</i>	<i>1</i>
<i>DBACIB1608</i>	<i>16" x 08"</i>	<i>5</i>	<i>3</i>	<i>1</i>
<i>DBACIB1610</i>	<i>16" x 10"</i>	<i>5</i>	<i>3</i>	<i>1</i>
<i>DBACIB1613</i>	<i>16" x 13"</i>	<i>5</i>	<i>5</i>	<i>1</i>
<i>DBACIB1616</i>	<i>16" x 16"</i>	<i>5</i>	<i>5</i>	<i>1</i>
<i>DBACIB1618</i>	<i>16" x 18"</i>	<i>5</i>	<i>6</i>	<i>1</i>
<i>DBACIB1620</i>	<i>16" x 20"</i>	<i>5</i>	<i>7</i>	<i>1</i>
<i>DBACIB1708</i>	<i>17" x 08"</i>	<i>5</i>	<i>3</i>	<i>1</i>
<i>DBACIB1710</i>	<i>17" x 10"</i>	<i>5</i>	<i>3</i>	<i>1</i>
<i>DBACIB1713</i>	<i>17" x 13"</i>	<i>5</i>	<i>5</i>	<i>1</i>
<i>DBACIB1716</i>	<i>17" x 16"</i>	<i>5</i>	<i>5</i>	<i>1</i>
<i>DBACIB1718</i>	<i>17" x 18"</i>	<i>5</i>	<i>6</i>	<i>1</i>
<i>DBACIB1720</i>	<i>17" x 20"</i>	<i>5</i>	<i>7</i>	<i>1</i>
<i>DBACIB1808</i>	<i>18" x 08"</i>	<i>5</i>	<i>3</i>	<i>1</i>
<i>DBACIB1810</i>	<i>18" x 10"</i>	<i>5</i>	<i>3</i>	<i>1</i>
<i>DBACIB1813</i>	<i>18" x 13"</i>	<i>5</i>	<i>5</i>	<i>1</i>
<i>DBACIB1816</i>	<i>18" x 16"</i>	<i>5</i>	<i>5</i>	<i>1</i>
<i>DBACIB1818</i>	<i>18" x 18"</i>	<i>5</i>	<i>6</i>	<i>1</i>
<i>DBACIB1820</i>	<i>18" x 20"</i>	<i>5</i>	<i>7</i>	<i>1</i>
<i>DBACIB2008</i>	<i>20" x 08"</i>	<i>6</i>	<i>3</i>	<i>1</i>
<i>DBACIB2010</i>	<i>20" x 10"</i>	<i>6</i>	<i>3</i>	<i>1</i>
<i>DBACIB2013</i>	<i>20" x 13"</i>	<i>6</i>	<i>5</i>	<i>1</i>
<i>DBACIB2016</i>	<i>20" x 16"</i>	<i>6</i>	<i>5</i>	<i>1</i>
<i>DBACIB2018</i>	<i>20" x 18"</i>	<i>6</i>	<i>6</i>	<i>1</i>
<i>DBACIB2020</i>	<i>20" x 20"</i>	<i>6</i>	<i>7</i>	<i>1</i>

*Each BAC System also includes an extra pack of 10 BAC pads.*

**DREAMLINE SUPPORT  
BACKREST -  
QUICK-RELEASE**



<i>DSB0810</i>	<i>DSB0812</i>	<i>DSB1012</i>	<i>DSB1014</i>	<i>DSB1214</i>	<i>DSB1216</i>	<i>DSB1218</i>	<i>DSB1414</i>
<i>DSB1416</i>	<i>DSB1418</i>	<i>DSB1420</i>	<i>DSB1616</i>	<i>DSB1618</i>	<i>DSB1620</i>	<i>DSB1622</i>	<i>DSB1816</i>
<i>DSB1818</i>	<i>DSB1820</i>	<i>DSB1822</i>	<i>DSB2018</i>	<i>DSB2020</i>	<i>DSB2022</i>	<i>DSBCUST</i>	<i>DSBCUSTXL</i>

*Outer Cover only add "OC" to end of code • Inner Cover only add "IC" to end of code  
Shell & Pad only add "SP" to end of code • Foam Inner & Outer Cover only add "FC" to the end of code*

**DREAMLINE SUPPORT  
BACKREST -  
FIXED**



<i>DSBF0810</i>	<i>DSBF0812</i>	<i>DSBF1012</i>	<i>DSBF1014</i>	<i>DSBF1214</i>	<i>DSBF1216</i>	<i>DSBF1218</i>	<i>DSBF1414</i>
<i>DSBF1416</i>	<i>DSBF1418</i>	<i>DSBF1420</i>	<i>DSBF1616</i>	<i>DSBF1618</i>	<i>DSBF1620</i>	<i>DSBF1622</i>	<i>DSBF1816</i>
<i>DSBF1818</i>	<i>DSBF1820</i>	<i>DSBF1822</i>	<i>DSBF2018</i>	<i>DSBF2020</i>	<i>DSBF2022</i>	<i>DSBFCUST</i>	<i>DSBFCUSTXL</i>

*• Uses the same outer & inner covers as the Support quick-release backrest*

**DREAMLINE S3  
BACKREST -  
QUICK-RELEASE**



<i>D3B0810</i>	<i>D3B0812</i>	<i>D3B1012</i>	<i>D3B1014</i>	<i>D3B1214</i>	<i>D3B1216</i>	<i>D3B1218</i>	<i>D3B1414</i>
<i>D3B1416</i>	<i>D3B1418</i>	<i>D3B1420</i>	<i>D3B1616</i>	<i>D3B1618</i>	<i>D3B1620</i>	<i>D3B1622</i>	<i>D3B1816</i>
<i>D3B1818</i>	<i>D3B1820</i>	<i>D3B1822</i>	<i>D3B2018</i>	<i>D3B2020</i>	<i>D3B2022</i>	<i>D3BCUST</i>	<i>D3BCUSTXL</i>

*Outer Cover only add "OC" to end of code • Inner Cover only add "IC" to end of code  
Shell & Pad only add "SP" to end of code • Foam Inner & Outer Cover only add "FC" to the end of code*

**DREAMLINE S3  
BACKREST -  
FIXED**



D3BF0810	D3BF0812	D3BF1012	D3BF1014	D3BF1214	D3BF1216	D3BF1218	D3BF1414
D3BF1416	D3BF1418	D3BF1420	D3BF1616	D3BF1618	D3BF1620	D3BF1622	D3BF1816
D3BF1818	D3BF1820	D3BF1822	D3BF2018	D3BF2020	D3BF2022	D3BFCUST	D3BFCUSTXL

• Uses the same outer & inner covers as the S3 quick-release backrest

**DREAMLINE STX  
BACKREST -  
QUICK-RELEASE**



DXB0810	DXB0812	DXB1012	DXB1014	DXB1214	DXB1216	DXB1218	DXB1414
DXB1416	DXB1418	DXB1420	DXB1616	DXB1618	DXB1620	DXB1622	DXB1816
DXB1818	DXB1820	DXB1822	DXB2018	DXB2020	DXB2022	DXBCUST	DXBCUSTXL

Outer Cover only add "OC" to end of code • Inner Cover only add "IC" to end of code  
Shell & Pad only add "SP" to end of code • Foam Inner & Outer Cover only add "FC" to the end of code

**DREAMLINE STX  
BACKREST -  
FIXED**



DXBF0810	DXBF0812	DXBF1012	DXBF1014	DXBF1214	DXBF1216	DXBF1218	DXBF1414
DXBF1416	DXBF1418	DXBF1420	DXBF1616	DXBF1618	DXBF1620	DXBF1622	DXBF1816
DXBF1818	DXBF1820	DXBF1822	DXBF2018	DXBF2020	DXBF2022	DXBFCUST	DXBFCUSTXL

• Uses the same outer & inner covers as the STX quick-release backrest

# Backrest Accessories

## BAC SYSTEM

(Backrest Advanced Contour system for Support Backrests)



<i>DBACSB0810</i>	<i>DBACSB0812</i>	<i>DBACSB1012</i>	<i>DBACSB1014</i>	<i>DBACSB1214</i>	<i>DBACSB1216</i>	<i>DBACSB1218</i>
<i>DBACSB1414</i>	<i>DBACSB1416</i>	<i>DBACSB1418</i>	<i>DBACSB1420</i>	<i>DBACSB1616</i>	<i>DBACSB1618</i>	<i>DBACSB1620</i>
<i>DBACSB1622</i>	<i>DBACSB1816</i>	<i>DBACSB1818</i>	<i>DBACSB1820</i>	<i>DBACSB1822</i>	<i>DBACSB2018</i>	<i>DBACSB2020</i>
<i>DBACSB2022</i>	<i>DBACSBUCUST</i>	<i>DBACSBUCUSTXL</i>				

## BAC SYSTEM FOR IGNITE BACKRESTS



<i>DBACIB1407</i>	<i>DBACIB1409</i>	<i>DBACIB1412</i>	<i>DBACIB1414</i>	<i>DBACIB1416</i>	<i>DBACIB1418</i>	<i>DBACIB1507</i>
<i>DBACIB1509</i>	<i>DBACIB1512</i>	<i>DBACIB1514</i>	<i>DBACIB1516</i>	<i>DBACIB1518</i>	<i>DBACIB1608</i>	<i>DBACIB1610</i>
<i>DBACIB1613</i>	<i>DBACIB1616</i>	<i>DBACIB1618</i>	<i>DBACIB1620</i>	<i>DBACIB1708</i>	<i>DBACIB1710</i>	<i>DBACIB1713</i>
<i>DBACIB1716</i>	<i>DBACIB1718</i>	<i>DBACIB1720</i>	<i>DBACIB1808</i>	<i>DBACIB1810</i>	<i>DBACIB1813</i>	<i>DBACIB1816</i>
<i>DBACIB1818</i>	<i>DBACIB1820</i>	<i>DBACIB2008</i>	<i>DBACIB2010</i>	<i>DBACIB2013</i>	<i>DBACIB2016</i>	<i>DBACIB2018</i>
<i>DBACIB2020</i>	<i>DBACIBUCUST</i>	<i>DBACIBUCUSTXL</i>				

# Backrest Accessories cont.

**BACKREST FIXED  
BKTS**



*DBU2FA*

**COMPACT  
BACKREST FIXED  
BKT**



*DBCMPFA*

**COMPACT Q/R  
CLAMPS**



*DBU2CPQRCLAMPKIT*

**STD Q/R CLAMPS**



*DBU2QRCLAMPKIT*

**4-POINT CLAMP  
KIT**



*DBU2QRCLAMPKIT4PT*

**BACKREST Q/R  
BKTS**



*DBU2COM2P*

**COMPACT  
BACKREST Q/R  
BKTS**



*DBU2CPCOM2P*

**4-POINT  
UPGRADE KIT**



*DBU2QR4PTKIT*

**BACKREST L-BKT  
2 PIN**



*DBU2LBKTDUAL*

**BACKREST L-BKT  
1 PIN**



*DBU2LBKTSING*

**4-POINT BACK  
BKTS**



*DBU2QRCOM4P*

**WIDTH  
REDUCTION KIT**



*DBWRK*

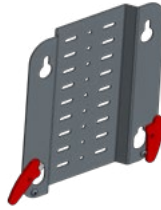
# **Backrest Accessories** *cont.*

## **IGNITE BACKREST OFFSET PLATES**



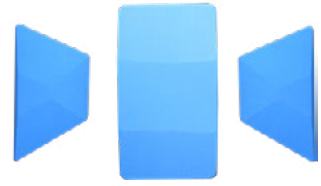
**DBCOMPOSP**

## **CORPUS INTERFACE PLATE**



**CDBIFP**

## **LUMBAR KIT COMPLETE**



**DBLMLTKIT**

## **LUMBAR PAD**



**DBLP**

## **LATERAL STABILITY WEDGE**



**DBLW**

## **BAC PADS -PACK OF 10**



**DBACPADS10**

## **SUNMATE CLUSTER PACK**



**DCSFB46**

# Backrest Accessories cont.

## MODESTY PANEL (FOR IGNITE BACKRESTS)



<i>DBMP12</i>	<i>DBMP14</i>	<i>DBMP15</i>
<i>DBMP16</i>	<i>DBMP17</i>	<i>DBMP18</i>
<i>DBMP20</i>	<i>DBMPCUST</i>	

## SIDEWINDER SUSPENSION KIT



*DBSWSS*

## SIDEWINDER SPARE DAMPERS - SOFT



*DBSWSDS*

## SIDEWINDER SPARE DAMPERS - FIRM



*DBSWSDF*

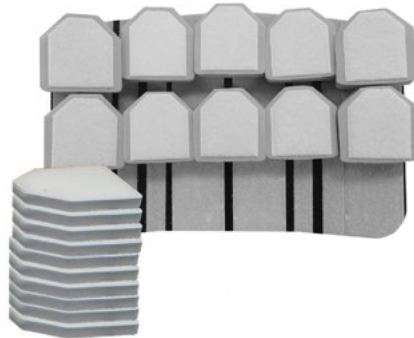
# Backrest Accessories *cont.*

## DREAMLINE SUPPORT BACKREST GROWTH KIT



<i>DSBGKC1218</i>	<i>DSBGKC1420</i>	<i>DSBGKC1622</i>	<i>DSBGKC1822</i>	<i>DSBGKC2022</i>
<i>DSBGKC1222</i>	<i>DSBGKC1424</i>	<i>DSBGKC1626</i>	<i>DSBGKC1826</i>	<i>DSBGKC2026</i>

## DREAMLINE BAC GROWTH KIT

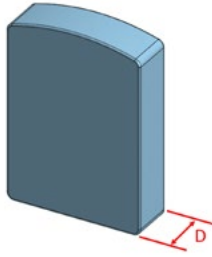


<i>DBACGK12</i>	<i>DBACGK14</i>	<i>DBACGK16</i>	<i>DBACGK18</i>	<i>DBACGK20</i>
-----------------	-----------------	-----------------	-----------------	-----------------



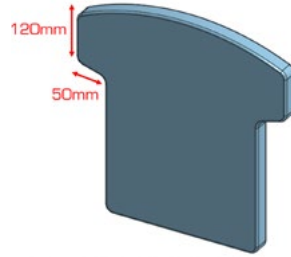
# Backrest Modifications

## EXTRA THICKNESS MOD



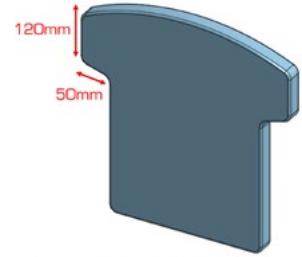
DBMODEF

## T-MOD (SUPPORT BACKREST SERIES)



DBMODT

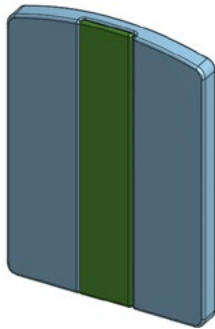
## T-MOD (FOR BAC SYSTEM)



DBACMODT

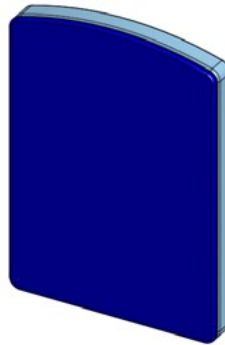
• Includes shell extensions,  
new foam & cover.

## GEL IN SPINAL REGION MOD



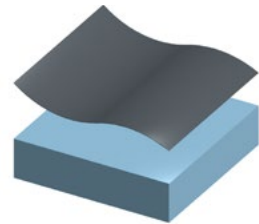
DBMODGSI

## EXTRA SUNMATE FOAM OVERLAY MOD



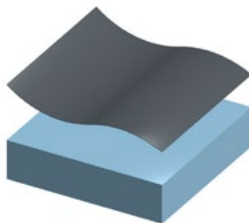
DBMODSFO

## DARTEX FABRIC SMOOTH MOD



DBMODCPU

## CUSTOM FABRIC MOD (OTHER)



DCMODCF

## SUPRACOR INSERT MOD



DBMODSBS1

# Backrest Modifications *cont.*

**COLOUR MOD**  
- RED



**DBMODRED**

**COLOUR MOD**  
- BLUE



**DBMODBLU**

**COLOUR MOD**  
- ORANGE



**DBMODORA**

**COLOUR MOD**  
- GREEN



**DBMODGRE**

**COLOUR MOD**  
-PURPLE



**DBMODPUR**

**COLOUR MOD**  
- YELLOW



**DBMODYEL**

**COLOUR MOD**  
- SILVER



**DBMODSIL**

**COLOUR MOD**  
-PINK



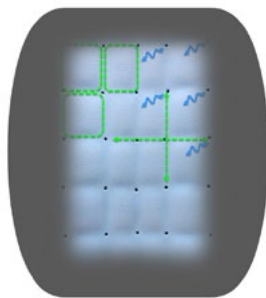
**DBMODPIN**

# Corpus Backrest Pads



<i>SKUs Size</i>	<i>Fits Permobil heights</i>	<i>Actual measurements</i>
1420, 1421, 1422	20", 21", 22"	1416, 1417, 1418
1423, 1424, 1425	23" 24", 25"	1419, 1420, 1421
1426, 1427, 1428	26", 27", 28"	1422, 1423, 1424
1620, 1621, 1622	20", 21", 22"	1616, 1617, 1618
1623, 1624, 1625	23", 24", 25"	1619, 1620, 1621
1626, 1627, 1628	26", 27", 28"	1622, 1623, 1624
1820, 1821, 1822	20", 21", 22"	1816, 1817, 1818
1823, 1824, 1825	23" 24", 25"	1819, 1820, 1821
1826, 1827, 1828	26", 27", 28"	1822, 1823, 1824
2020, 2021, 2022	20", 21", 22"	2016, 2017, 2018
2023, 2024, 2025	23" 24", 25"	2019, 2020, 2021
2026, 2027, 2028	26", 27", 28"	2022, 2023, 2024
2220, 2221, 2222	20", 21", 22"	2016, 2017, 2018
2223, 2224, 2225	23" 24", 25"	2019, 2020, 2021
2226, 2227, 2228	26", 27", 28"	2022, 2023, 2024

**CORPUS DREAMLINE  
SUPPORT BACKREST**



<i>CDSB1420FC</i>	<i>CDSB1421FC</i>	<i>CDSB1422FC</i>	<i>CDSB1423FC</i>	<i>CDSB1424FC</i>	<i>CDSB1425FC</i>	<i>CDSB1426FC</i>
<i>CDSB1427FC</i>	<i>CDSB1428FC</i>	<i>CDSB1620FC</i>	<i>CDSB1621FC</i>	<i>CDSB1622FC</i>	<i>CDSB1623FC</i>	<i>CDSB1624FC</i>
<i>CDSB1625FC</i>	<i>CDSB1626FC</i>	<i>CDSB1627FC</i>	<i>CDSB1628FC</i>	<i>CDSB1820FC</i>	<i>CDSB1821FC</i>	<i>CDSB1822FC</i>
<i>CDSB1823FC</i>	<i>CDSB1824FC</i>	<i>CDSB1825FC</i>	<i>CDSB1826FC</i>	<i>CDSB1827FC</i>	<i>CDSB1828FC</i>	<i>CDSB2020FC</i>
<i>CDSB2021FC</i>	<i>CDSB2022FC</i>	<i>CDSB2023FC</i>	<i>CDSB2024FC</i>	<i>CDSB2025FC</i>	<i>CDSB2026FC</i>	<i>CDSB2027FC</i>
<i>CDSB2028FC</i>	<i>CDSB2220FC</i>	<i>CDSB2221FC</i>	<i>CDSB2222FC</i>	<i>CDSB2223FC</i>	<i>CDSB2224FC</i>	<i>CDSB2225FC</i>
<i>CDSB2226FC</i>	<i>CDSB2227FC</i>	<i>CDSB2228FC</i>	<i>Replace "FC" with "OC" for spare outer cover</i>			

**CORPUS DREAMLINE  
S3 BACKREST**



<i>CD3B1420FC</i>	<i>CD3B1421FC</i>	<i>CD3B1422FC</i>	<i>CD3B1423FC</i>	<i>CD3B1424FC</i>	<i>CD3B1425FC</i>	<i>CD3B1426FC</i>
<i>CD3B1427FC</i>	<i>CD3B1428FC</i>	<i>CD3B1620FC</i>	<i>CD3B1621FC</i>	<i>CD3B1622FC</i>	<i>CD3B1623FC</i>	<i>CD3B1624FC</i>
<i>CD3B1625FC</i>	<i>CD3B1626FC</i>	<i>CD3B1627FC</i>	<i>CD3B1628FC</i>	<i>CD3B1820FC</i>	<i>CD3B1821FC</i>	<i>CD3B1822FC</i>
<i>CD3B1823FC</i>	<i>CD3B1824FC</i>	<i>CD3B1825FC</i>	<i>CD3B1826FC</i>	<i>CD3B1827FC</i>	<i>CD3B1828FC</i>	<i>CD3B2020FC</i>
<i>CD3B2021FC</i>	<i>CD3B2022FC</i>	<i>CD3B2023FC</i>	<i>CD3B2024FC</i>	<i>CD3B2025FC</i>	<i>CD3B2026FC</i>	<i>CD3B2027FC</i>
<i>CD3B2028FC</i>	<i>CD3B2220FC</i>	<i>CD3B2221FC</i>	<i>CD3B2222FC</i>	<i>CD3B2223FC</i>	<i>CD3B2224FC</i>	<i>CD3B2225FC</i>
<i>CD3B2226FC</i>	<i>CD3B2227FC</i>	<i>CD3B2228FC</i>	<i>Replace "FC" with "OC" for spare outer cover</i>			

**CORPUS DREAMLINE  
STX BACKREST**



CDXB1420FC	CDXB1421FC	CDXB1422FC	CDXB1423FC	CDXB1424FC	CDXB1425FC	CDXB1426FC
CDXB1427FC	CDXB1428FC	CDXB1620FC	CDXB1621FC	CDXB1622FC	CDXB1623FC	CDXB1624FC
CDXB1625FC	CDXB1626FC	CDXB1627FC	CDXB1628FC	CDXB1820FC	CDXB1821FC	CDXB1822FC
CDXB1823FC	CDXB1824FC	CDXB1825FC	CDXB1826FC	CDXB1827FC	CDXB1828FC	CDXB2020FC
CDXB2021FC	CDXB2022FC	CDXB2023FC	CDXB2024FC	CDXB2025FC	CDXB2026FC	CDXB2027FC
CDXB2028FC	CDXB2220FC	CDXB2221FC	CDXB2222FC	CDXB2223FC	CDXB2224FC	CDXB2225FC
CDXB2226FC	CDXB2227FC	CDXB2228FC				

Replace "FC" with "OC" for spare outer cover • Replace "FC" with "IC" for spare inner cover

**BAC SYSTEM FOR  
CORPUS BACKRESTS**



CDBAC1420	CDBAC1421	CDBAC1422	CDBAC1423	CDBAC1424	CDBAC1425	CDBAC1426
CDBAC1427	CDBAC1428	CDBAC1620	CDBAC1621	CDBAC1622	CDBAC1623	CDBAC1624
CDBAC1625	CDBAC1626	CDBAC1627	CDBAC1628	CDBAC1820	CDBAC1821	CDBAC1822
CDBAC1823	CDBAC1824	CDBAC1825	CDBAC1826	CDBAC1827	CDBAC1828	CDBAC2020
CDBAC2021	CDBAC2022	CDBAC2023	CDBAC2024	CDBAC2025	CDBAC2026	CDBAC2027
CDBAC2028	CDBAC2220	CDBAC2221	CDBAC2222	CDBAC2223	CDBAC2224	CDBAC2225
CDBAC2226	CDBAC2227	CDBAC2228				



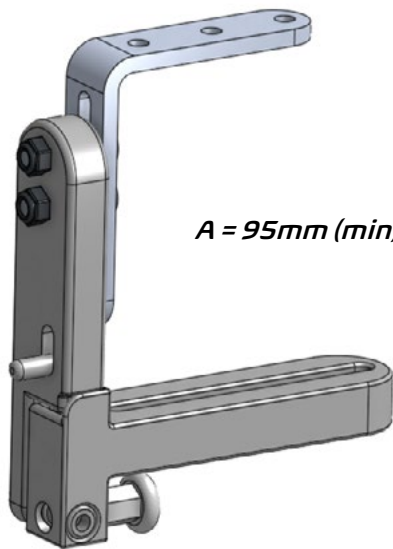


*Dreamline Code Visual Directory 2023*

*› Medial Thigh  
Supports*

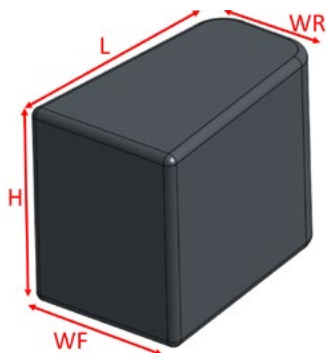
# Medial Thigh Support

## SWING-DOWN / REMOVABLE MEDIAL THIGH SUPPORT BRACKET



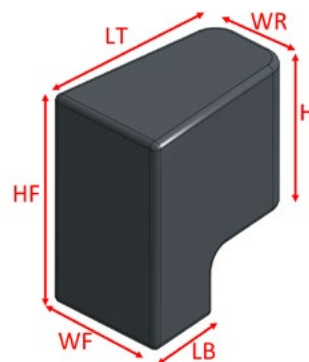
$A = 95\text{mm (min)} - 135\text{mm (max)}$

### PAD DIMENSIONS



	SMALL	MEDIUM	LARGE
WF (mm)	70	95	115
WR (mm)	50	60	85
L (mm)	110	150	180
H (mm)	90	100	110

### WATERFALL PAD DIMENSIONS

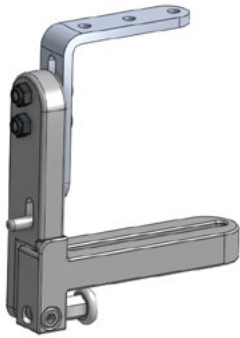


	SMALL	MEDIUM	LARGE
WF (mm)	70	85	115
WR (mm)	50	60	85
LT (mm)	110	150	180
LB (mm)	45	60	60
HF (mm)	145	155	165
HR (mm)	90	100	110



# Medial Thigh Support *cont.*

## SWING-DOWN/ REMOVABLE MEDIAL THIGH SUPPORT



*DPSD*

• *NOTE: Includes Fastener Kit  
(pg 105)*

## MEDIAL THIGH SUPPORT PAD



*DPPPSML*

*DPPPMED*

*DPPPLGE*

*DPPPCUSTOM*

## WATERFALL MEDIAL THIGH SUPPORT PAD



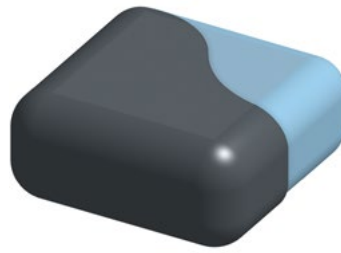
*DPPWPSML*

*DPPWPMED*

*DPPWPLGE*

*DPPWPCUST*

# *Medial Thigh Support Accessories*



***MEDIAL THIGH SUPPORT  
PAD OUTER COVER***

<i>DPPSMLOC</i>	<i>DPPMEDOC</i>	<i>DPPLGEOC</i>	<i>DPPCUSTOC</i>
-----------------	-----------------	-----------------	------------------

***WATERFALL MEDIAL THIGH  
SUPPORT OUTER COVER***

<i>DPPWSMLOC</i>	<i>DPPWMEDOC</i>	<i>DPPWLGEOC</i>	<i>DPPWCUSTOC</i>
------------------	------------------	------------------	-------------------

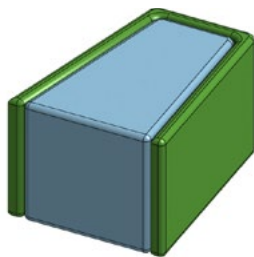
***MEDIAL THIGH SUPPORT BRACKET  
PROTECTIVE SLEEVE***

<i>DPSDPS</i>
---------------



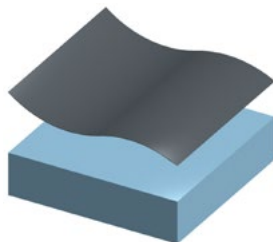
# *Medial Thigh Support Modifications*

*GEL OVERLAY  
MOD*



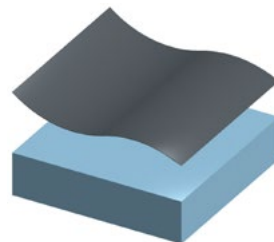
*DPPMODGO*

*DARTEX FABRIC  
SMOOTH MOD*



*DPPMODCPU*

*CUSTOM FABRIC  
MOD*



*DPPMODCF*

# Medial Thigh Support Modifications *cont.*

**COLOUR MOD**

**- RED**



**DPPMODRED**

**COLOUR MOD**

**- BLUE**



**DPPMODBLU**

**COLOUR MOD**

**- ORANGE**



**DPPMODORA**

**COLOUR MOD**

**- GREEN**



**DPPMODGRE**

**COLOUR MOD**

**- PURPLE**



**DPPMODPUR**

**COLOUR MOD**

**- YELLOW**



**DPPMODYEL**

**COLOUR MOD**

**- SILVER**



**DPPMODSIL**

**COLOUR MOD**

**- PINK**



**DPPMODPIN**







*Dreamline Code Visual Directory 2023*

# *› Hip Guides & Armrests*

# Hip Guides

## SWING-DOWN / REMOVABLE MEDIAL THIGH SUPPORT BRACKET



<i>HEIGHT FROM SEAT PAN</i>		
	<i>MIN</i>	<i>MAX (Std/Pivot)</i>
<i>A (mm)</i>	<i>55</i>	<i>125 / 160</i>
<i>B (mm)</i>	<i>245</i>	<i>325</i>

## SWING-DOWN HIP GUIDE BRACKET



*DHGSD*

• *NOTE: Includes Fastener Kit (pg 104)*

## SWING-DOWN PIVOT HIP GUIDE BRACKET



*DHGSDP*

• *NOTE: Includes Fastener Kit (pg 104)*



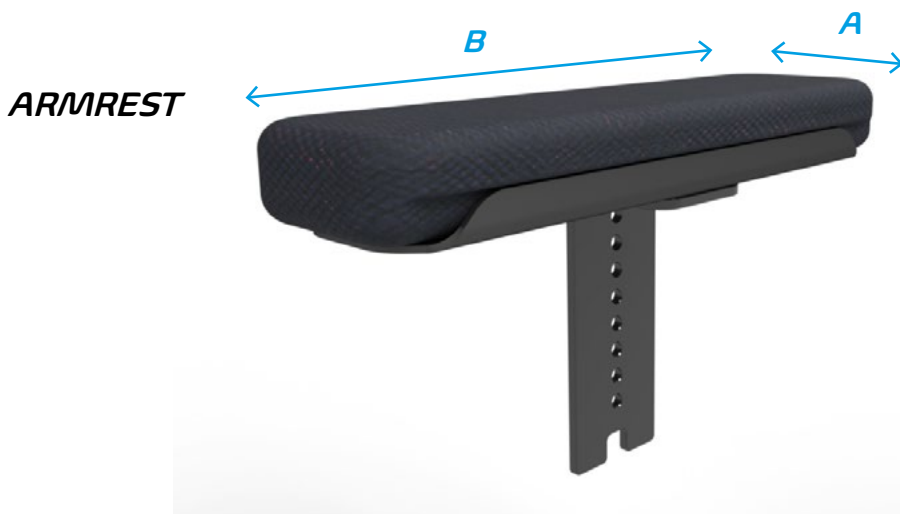
# Hip Guides *cont.*

## HIP GUIDE PAD



<i>A (mm)</i>	<i>85</i>	<i>85</i>	<i>105</i>	<i>105</i>	<i>105</i>	<i>XXX</i>
<i>B (mm)</i>	<i>250</i>	<i>300</i>	<i>350</i>	<i>400</i>	<i>450</i>	<i>XXX</i>
<i>CODE</i>	<i>DHGP10</i>	<i>DHGP12</i>	<i>DHGP14</i>	<i>DHGP16</i>	<i>DHGP18</i>	<i>DHGPCUST</i>

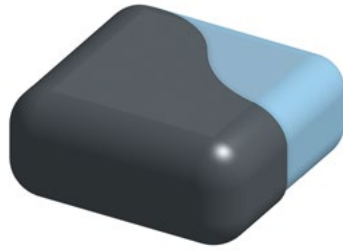
## Armrest



<i>A (mm)</i>	<i>85</i>	<i>85</i>	<i>105</i>	<i>105</i>	<i>105</i>	<i>XXX</i>
<i>B (mm)</i>	<i>250</i>	<i>300</i>	<i>350</i>	<i>400</i>	<i>450</i>	<i>XXX</i>
<i>CODE</i>	<i>DAR10</i>	<i>DAR12</i>	<i>DAR14</i>	<i>DAR16</i>	<i>DAR18</i>	<i>DARCUST</i>

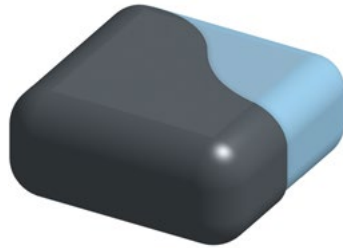
# Hip Guide & Armrest Accessories

## HIP GUIDE SPARE OUTER COVER



<i>DHGP100C</i>	<i>DHGP120C</i>	<i>DHGP140C</i>
<i>DHGP160C</i>	<i>DHGP180C</i>	<i>DHGPCUSTOC</i>

## ARMREST SPARE OUTER COVER



<i>DARP100C</i>	<i>DARP120C</i>	<i>DARP140C</i>
<i>DARP160C</i>	<i>DARP180C</i>	<i>DARPCUSTOC</i>

## HIP GUIDE EXTRA PAD SPACER ONLY



<i>DHGSPACER</i>
------------------

# Hip Guide & Armrest Accessories *cont.*

## ELBOW BLOCK



<i>W x H (mm)</i>	<i>80 X 80</i>	<i>95 X 85</i>	<i>100 X 100</i>
<i>CODE</i>	<i>DELBBLKSML</i>	<i>DELBBLKMED</i>	<i>DELBBLKLGE</i>

## ARM BLOCK



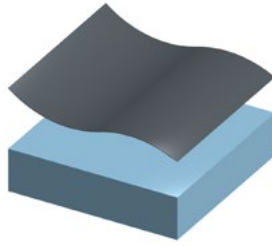
<i>L x H (mm)</i>	<i>80 X 80</i>	<i>155 X 85</i>	<i>205 X 100</i>	<i>xxx</i>
<i>CODE</i>	<i>DARMBLKSML</i>	<i>DARMBLKMED</i>	<i>DARMBLKLGE</i>	<i>DARMBLKCUST</i>

# Hip Guide & Armrest Modifications

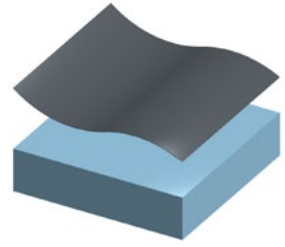
**GEL OVERLAY  
MOD**



**DARTEX COVER  
SMOOTH MOD**



**CUSTOM FABRIC  
MOD**



<i>HIP GUIDE</i>	<i>DHGMODGO</i>
<i>ARMREST</i>	<i>DARMODGO</i>

<i>HIP GUIDE</i>	<i>DHGMODCPU</i>
<i>ARMREST</i>	<i>DARMODCPU</i>

<i>HIP GUIDE</i>	<i>DHGMODCF</i>
<i>ARMREST</i>	<i>DARMODCF</i>

# Hip Guide & Armrest Modifications *cont.*

**COLOUR MOD**  
- RED



<i>HIP GUIDE</i>	<i>DHGMODRED</i>
<i>ARMREST</i>	<i>DARMODRED</i>

**COLOUR MOD**  
- BLUE



<i>HIP GUIDE</i>	<i>DHGMODBLU</i>
<i>ARMREST</i>	<i>DARMODBLU</i>

**COLOUR MOD**  
- ORANGE



<i>HIP GUIDE</i>	<i>DHGMODORA</i>
<i>ARMREST</i>	<i>DARMODORA</i>

**COLOUR MOD**  
- GREEN



<i>HIP GUIDE</i>	<i>DHGMODGRE</i>
<i>ARMREST</i>	<i>DARMODGRE</i>

**COLOUR MOD**  
-PURPLE



<i>HIP GUIDE</i>	<i>DHGMODPUR</i>
<i>ARMREST</i>	<i>DARMODPUR</i>

**COLOUR MOD**  
- YELLOW



<i>HIP GUIDE</i>	<i>DHGMODYEL</i>
<i>ARMREST</i>	<i>DARMODYEL</i>

**COLOUR MOD**  
- SILVER



<i>HIP GUIDE</i>	<i>DHGMODSIL</i>
<i>ARMREST</i>	<i>DARMODSIL</i>

**COLOUR MOD**  
-PINK



<i>HIP GUIDE</i>	<i>DHGMODPIN</i>
<i>ARMREST</i>	<i>DARMODPIN</i>



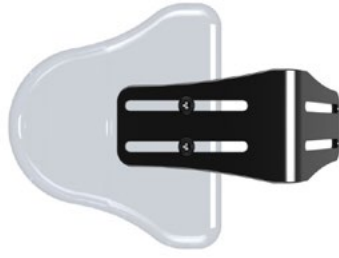


*Dreamline Code Visual Directory 2023*

# *› Trunk Lateral Support Hardware*

# Trunk Lateral Support Hardware

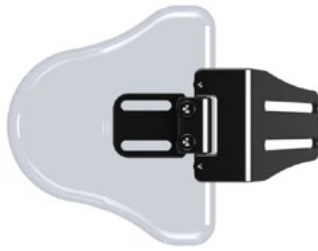
## FIXED TRUNK LATERAL SUPPORT HARDWARE



DFL

- Depth & Width Adjustable
- NOTE: Includes Lateral Bracket & Pad fastener kits (pg 104)

## FIXED ANGLE ADJUSTABLE TRUNK LATERAL SUPPORT HARDWARE



DFLA

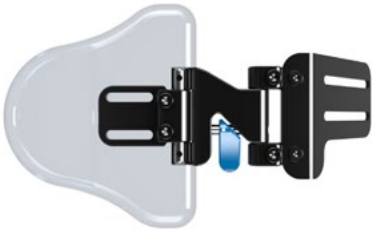
- Depth & Width Adjustable
- NOTE: Includes Lateral Bracket & Pad fastener kits (pg 104)



# Trunk Lateral Support Hardware *cont.*

## ORIGINAL SWING-AWAY TRUNK LATERAL SUPPORT HARDWARE

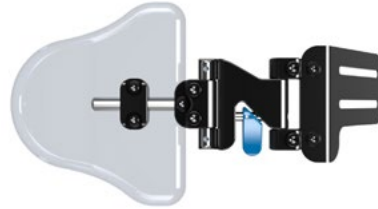
**ORIGINAL LATERAL BRACKET (NON PIVOT)**



LEFT	RIGHT
DSALL	DSALR

• NOTE: Includes Lateral Bracket & Pad fastener kits (pg 104)

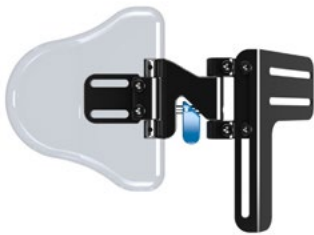
**ORIGINAL LATERAL BRACKET (PIVOT)**



LEFT	RIGHT
DSALPL	DSALPR

• NOTE: Includes Lateral Bracket & Pad fastener kits (pg 104)

**ORIGINAL LO-RISER LATERAL BRACKET (NON PIVOT)**



LEFT	RIGHT
DSALLRL	DSALLRR
LEFT - KIDS	RIGHT - KIDS
DSALLRKL	DSALLRKR

• NOTE: Includes Lateral Bracket & Pad fastener kits (pg 104)

**ORIGINAL LO-RISER LATERAL BRACKET (PIVOT)**



LEFT	RIGHT
DSALLRPL	DSALLRPR
LEFT - KIDS	RIGHT - KIDS
DSALLRPKL	DSALLRPKR

• NOTE: Includes Lateral Bracket & Pad fastener kits (pg 104)

**ORIGINAL CLAMP-ON LATERAL BRACKET (NON PIVOT)**



LEFT	RIGHT
DSALCLL	DSALCLR

• NOTE: Includes Lateral Pad fastener kit (pg 104)

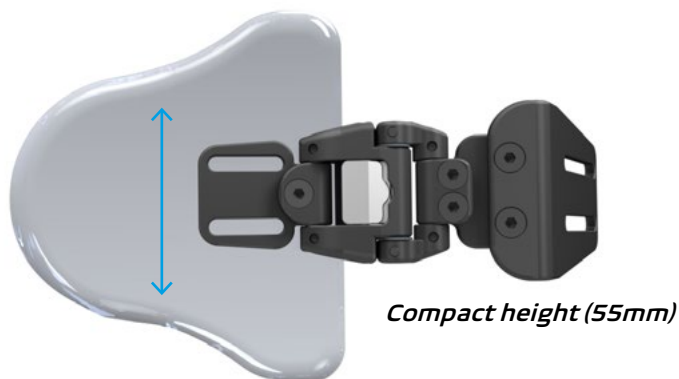
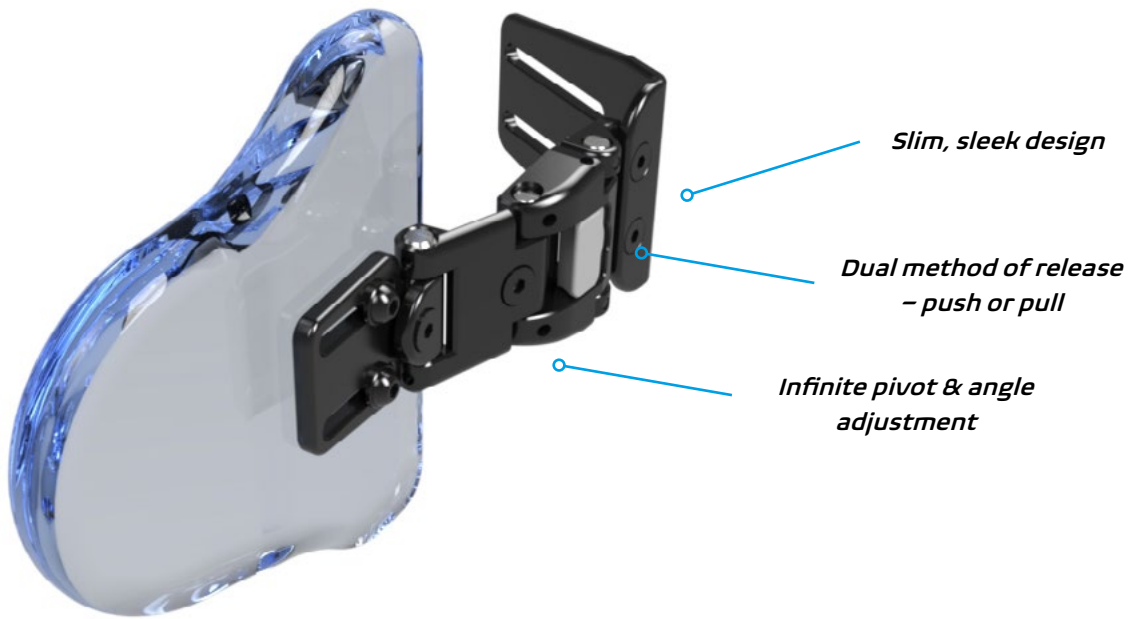
**ORIGINAL CLAMP-ON LATERAL BRACKET (PIVOT)**



LEFT	RIGHT
DSALCPL	DSALCPR

• NOTE: Includes Lateral Pad fastener kit (pg 104)

# Saddleback Trunk Lateral Support Hardware



# Saddleback Trunk Lateral Support Hardware *cont.*

**SADDLEBACK SWING-AWAY LATERAL BRACKET (NON-PIVOT)**



**DLSA**

• NOTE: Includes Lateral Bracket & Pad fastener kits (pg 104)

**SADDLEBACK SWING-AWAY LATERAL BRACKET (PIVOT)**



**DLSAP**

• NOTE: Includes Lateral Bracket & Pad fastener kits (pg 104)

**SADDLEBACK LO-RISER SWING-AWAY LATERAL BRACKET (NON-PIVOT)**



<b>DLSALR</b>	<b>STD BRACKET</b>
<b>DLSALRK</b>	<b>KIDS (SMALL L-BKT FOR TINY BACKRESTS)</b>

• NOTE: Includes Lateral Bracket & Pad fastener kits (pg 104)

**SADDLEBACK LO-RISER SWING-AWAY LATERAL BRACKET (PIVOT)**



<b>DLSALRP</b>	<b>STD BRACKET</b>
<b>DLSALRPK</b>	<b>KIDS (SMALL L-BKT FOR TINY BACKRESTS)</b>

• NOTE: Includes Lateral Bracket & Pad fastener kits (pg 104)

**SADDLEBACK CLAMP-ON SWING-AWAY LATERAL BRACKET (NON-PIVOT)**



**DLSAC**

• NOTE: Includes Lateral Pad fastener kit (pg 104)

**SADDLEBACK CLAMP-ON SWING-AWAY LATERAL BRACKET (PIVOT)**

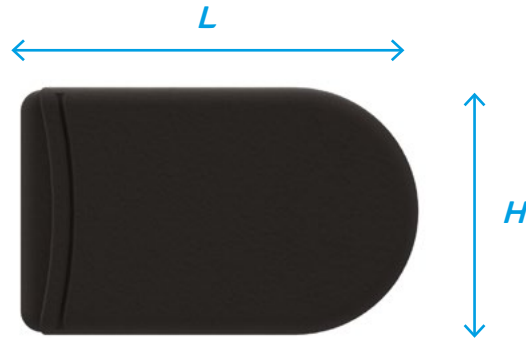


**DLSACP**

• NOTE: Includes Lateral Pad fastener kit (pg 104)

# Trunk Lateral Support Pads

## STRAIGHT LATERAL PAD



	SIZE	L	H	C
DLPPSX SML	X-SML	145mm	105mm	0
DLPPS SML	SML	155mm	110mm	0
DLPPS MED	MED	172mm	117mm	0
DLPPS LGE	LGE	203mm	140mm	0

## CURVED LATERAL PAD



	SIZE	L	H	C
DLPPCX SML	X-SML	145mm	105mm	20mm
DLPPC SML	SML	155mm	110mm	25mm
DLPPC MED	MED	172mm	117mm	28mm
DLPPC LGE	LGE	203mm	140mm	35mm

## ANTERIOR CURVED LATERAL PAD



	SIZE	L	H	C
DLPPA SML	SML	220mm	95mm	ADJUSTABLE
DLPPA MED	MED	260mm	105mm	ADJUSTABLE
DLPPA LGE	LGE	310mm	115mm	ADJUSTABLE

• Anterior pads can be formed to the users bodyshape.

# Trunk Lateral Support Pads *cont.*

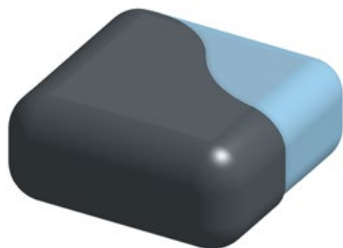
## TEARDROP LATERAL PAD



	<i>SIZE</i>	<i>L</i>	<i>H</i>	<i>C</i>
<i>DLPPTDSML</i>	<i>SML</i>	<i>155mm</i>	<i>155mm</i>	<i>15mm</i>
<i>DLPPTDMED</i>	<i>MED</i>	<i>170mm</i>	<i>187mm</i>	<i>17mm</i>
<i>DLPPTDLGE</i>	<i>LGE</i>	<i>190mm</i>	<i>227mm</i>	<i>20mm</i>
<i>DLPPCUSTXL</i>	<i>CUSTOM</i>	<i>XXX</i>	<i>XXX</i>	<i>XXX</i>

# Trunk Lateral Support Accessories

## LATERAL PAD SPARE COVERS



<i>ST / CV</i>	<i>ANTERIOR</i>	<i>TEARDROP</i>
<i>DLPSXSMLOC</i>	<i>DLPAXSMLOC</i>	<i>DLPTDSMLOC</i>
<i>DLPSSMLOC</i>	<i>DLPASMLOC</i>	<i>DLPTDMEDOC</i>
<i>DLPSMEDOC</i>	<i>DLPAMEDOC</i>	<i>DLPTDLGEOC</i>
<i>DLPSLGEOC</i>	<i>DLPALGEOC</i>	

## ORIGINAL LATERAL BRACKET EXTRA LINK



*DSALEXTL*

## SADDLEBACK LATERAL BRACKET EXTRA LINK



*DLSAEXTL*

## LATERAL BRACKET PROTECTIVE BOOT



*ORIGINAL BRACKET BOOT*

*DSALBOOT*

*SADDLEBACK BRACKET BOOT*

*DLSABOOT*

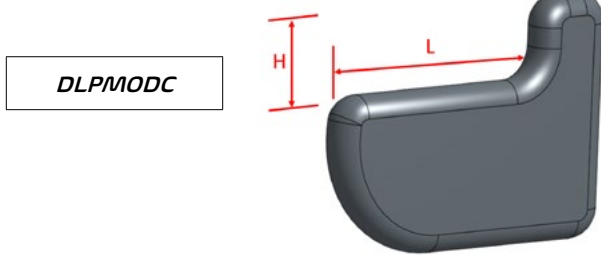
## DREAMLINE LATERAL INTERFACE BRACKET FOR CORPUS BACKREST



*CDSALLBKT*

# Trunk Lateral Support Modifications

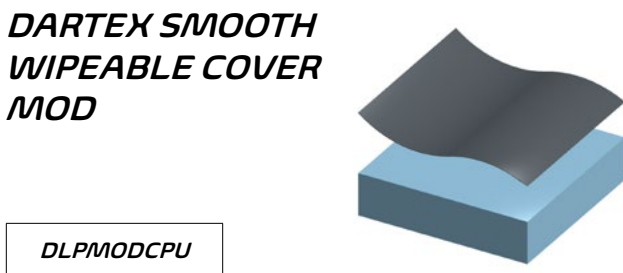
**LATERAL PAD  
CUT-OUT MOD**



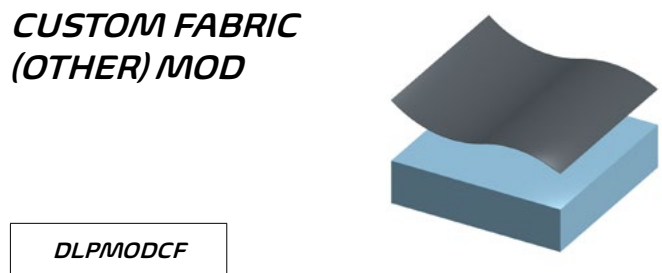
**LATERAL PAD GEL  
OVERLAY MOD**



**DARTEX SMOOTH  
WIPEABLE COVER  
MOD**



**CUSTOM FABRIC  
(OTHER) MOD**



# Trunk Lateral Support Modifications *cont.*

**COLOUR MOD**  
- RED



**DLPMODRED**

**COLOUR MOD**  
- BLUE



**DLPMODBLU**

**COLOUR MOD**  
- ORANGE



**DLPMODORA**

**COLOUR MOD**  
- GREEN



**DLPMODGRE**

**COLOUR MOD**  
-PURPLE



**DLPMODPUR**

**COLOUR MOD**  
- YELLOW



**DLPMODYEL**

**COLOUR MOD**  
- SILVER



**DLPMODSIL**

**COLOUR MOD**  
-PINK



**DLPMODPIN**









*Dreamline Code Visual Directory 2023*

# *› Headrests*

# Saddleback Headrest Hardware

## SADDLEBACK HEADREST BRACKET



**DHR**

• NOTE: Includes headrest bracket fastener kit (pg 93)

210mm

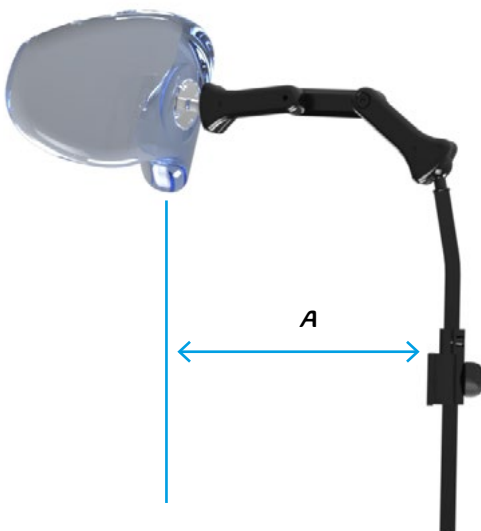
## SADDLEBACK HEADREST SWING-DOWN BRACKET



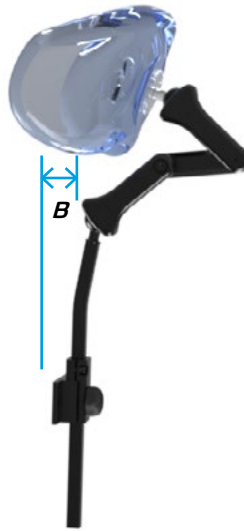
**DHRS**

• NOTE: Includes headrest bracket fastener kit (pg 93)

## MAX FORWARD REACH (WITHOUT EXTRA LINKS)



## MAX REARWARD REACH



## WIDE ANGLE SWING-DOWN



A = 280mm from headrest mount to headrest pad from face (without extra links)  
 B = 65mm from headrest mount rearward to headrest pad front face

# Headrest Pads

## ASSIST HEADREST PAD



CODE	SIZE	W	H	C
DHPASML	SML	220mm	117mm	20mm
DHPALGE	LGE	240mm	125mm	25mm

## CONTOURED HEADREST PAD



CODE	SIZE	W	H	C
DHPCXSML	X-SML	160mm	95mm	50mm
DHPC SML	SML	230mm	117mm	100mm
DHPCLGE	LGE	270mm	140mm	115mm

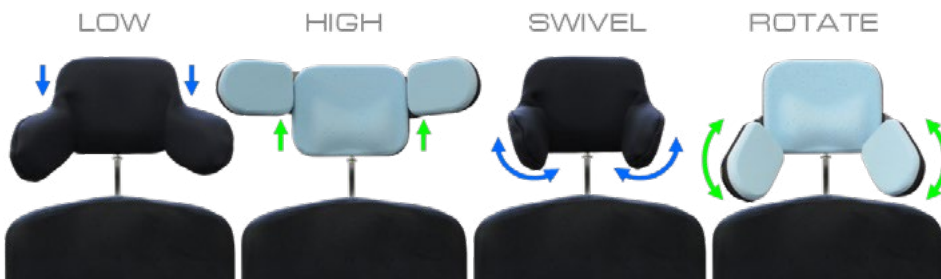
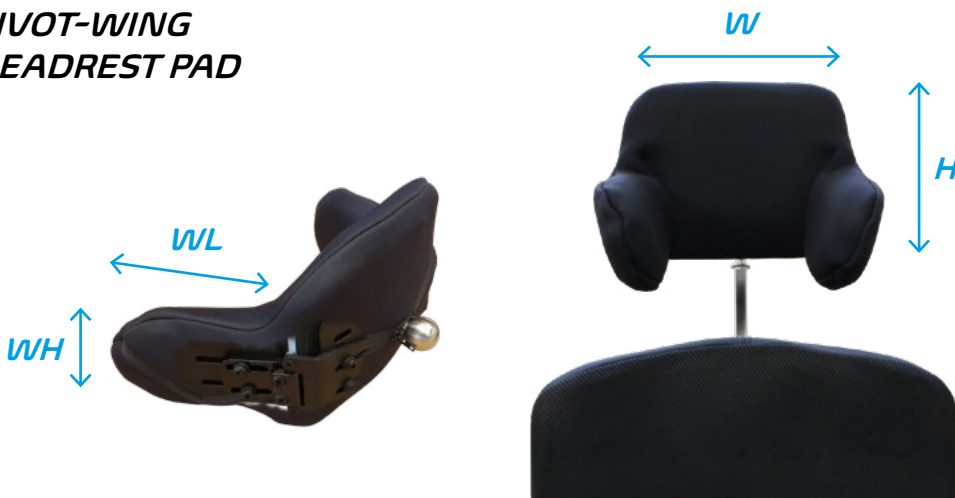
# Headrest Pads *cont.*

## OPEN-CURVED HEADREST PAD



CODE	SIZE	W	H	C
DHPOCSML	SML	300mm	150mm	35mm
DHPOCLGE	LGE	400mm	185mm	35mm

## PIVOT-WING HEADREST PAD



CODE	SIZE	W	H	WL	WH
DHPPWSML	SML	185mm	140mm	118mm	80mm
DHPPWLGE	LGE	205mm	158mm	118mm	80mm

# Headrest Accessories

**EXTRA LINK**



**DHRLINK**

**SADDLEBACK HEADREST MOUNT**



**DHRM**

**DREAMLINE HEADREST TO CORPUS OFFSET BRACKET**



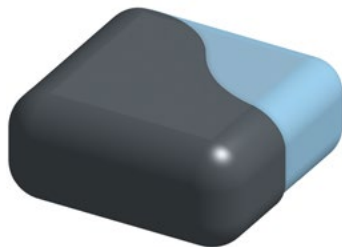
**CDHIFB**

**HEADREST TOP ARM ASSEMBLY**



**DHRTA**

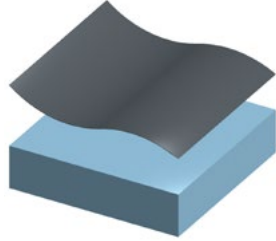
**HEADREST SPARE OUTER COVER**



	<i>X-SML</i>	<i>SML</i>	<i>LGE</i>
<i>ASSIST</i>	-	<i>DHPASMLOC</i>	<i>DHPALGEOC</i>
<i>CONTOURED</i>	<i>DHPCXSMLLOC</i>	<i>DHPCSMLOC</i>	<i>DHPCLGEOC</i>
<i>OPEN CURVED</i>	-	<i>DHPOCSMLLOC</i>	<i>DHPOCLGEOC</i>
<i>PIVOT-WING</i>	-	<i>DHPPWSMLLOC</i>	<i>DHPPWLGEOC</i>

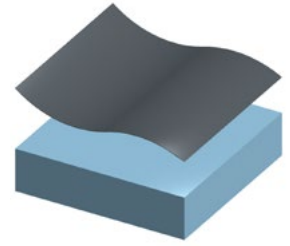
# Headrest Modifications

**DARTEX SMOOTH  
WIPEABLE COVER**



**DHPMODCPU**

**OTHER FABRIC  
(CONTACT SURFACE)**



**DHPMODCF**

**EXTRA SUNMATE  
FOAM OVERLAY**



**DHPMODSFO**



# Headrest Modifications *cont.*

**COLOUR MOD**  
- RED



DHPMODRED

**COLOUR MOD**  
- BLUE



DHPMODBLU

**COLOUR MOD**  
- ORANGE



DHPMODORA

**COLOUR MOD**  
- GREEN



DHPMODGRE

**COLOUR MOD**  
-PURPLE



DHPMODPUR

**COLOUR MOD**  
- YELLOW



DHPMODYEL

**COLOUR MOD**  
- SILVER



DHPMODSIL

**COLOUR MOD**  
-PINK



DHPMODPIN





*Dreamline Code Visual Directory 2023*

*› Hip Belts,  
Harnesses  
& Calf Straps*

# Harnesses

## H2X HARNESS



<i>CODE</i>	<i>SIZE</i>	<i>W</i>	<i>CW</i>	<i>H</i>
<i>DH2XXSML</i>	<i>X-SML</i>	<i>210mm</i>	<i>120mm</i>	<i>325mm</i>
<i>DH2XSML</i>	<i>SML</i>	<i>280mm</i>	<i>120mm</i>	<i>380mm</i>
<i>DH2XMED</i>	<i>MED</i>	<i>370mm</i>	<i>150mm</i>	<i>440mm</i>
<i>DH2XLGE</i>	<i>LGE</i>	<i>420mm</i>	<i>180mm</i>	<i>505mm</i>
<i>DH2XXLGE</i>	<i>X-LGE</i>	<i>520mm</i>	<i>180mm</i>	<i>590mm</i>

# Harness Accessories

## HARNESS PROTECTOR SLEEVES



<i>X-SML</i>	<i>SML</i>	<i>MED</i>	<i>LGE</i>	<i>X-LGE</i>
<i>DH2XPSXSML</i>	<i>DH2XPSSML</i>	<i>DH2XPSMED</i>	<i>DH2XPSLGE</i>	<i>DH2XPSXLGE</i>

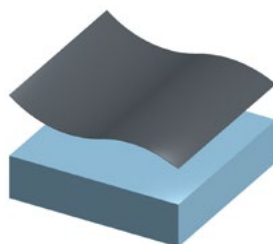
## HARNESS RETAINER KIT



*DHRK*

# Harness Modifications

**PROTECTOR  
SLEEVE DARTEX  
SMOOTH SIDE  
MODIFICATION**



*DH2XPSMODPU*

**ATTACHMENT  
BOLT HOLES ADDED  
TO STRAPS  
MODIFICATION**



*DHBHMODSH*

# Harness Protector Sleeve Modifications *cont.*

**COLOUR MOD**  
- RED



DH2XPSMODRED

**COLOUR MOD**  
- BLUE



DH2XPSMODBLU

**COLOUR MOD**  
- ORANGE



DH2XPSMODORA

**COLOUR MOD**  
- GREEN



DH2XPSMODGRE

**COLOUR MOD**  
-PURPLE



DH2XPSMODPUR

**COLOUR MOD**  
- YELLOW



DH2XPSMODYEL

**COLOUR MOD**  
- SILVER



DH2XPSMODSIL

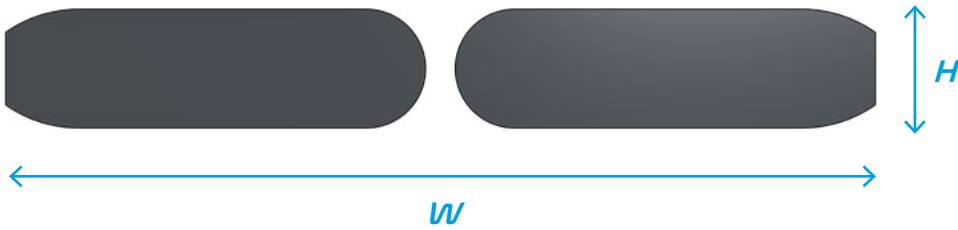
**COLOUR MOD**  
-PINK



DH2XPSMODPIN

# Hip Belts

## HIP BELT PAD MEASUREMENTS



	<i>X-SML</i>	<i>SML</i>	<i>MED</i>	<i>LGE</i>
<i>W</i>	<i>330mm</i>	<i>400mm</i>	<i>490mm</i>	<i>570mm</i>
<i>H</i>	<i>55mm</i>	<i>65mm</i>	<i>65mm</i>	<i>75mm</i>

### 2-POINT CENTRE PULL SIDE RELEASE



<i>X-SML</i>	<i>SML</i>	<i>MED</i>	<i>LGE</i>
<i>DHB2CPXSML</i>	<i>DHB2CPSML</i>	<i>DHB2CPMED</i>	<i>DHB2CPLGE</i>

### 2-POINT CENTRE PULL CENTRE RELEASE



<i>SML</i>	<i>MED</i>	<i>LGE</i>
<i>DHB2CMSML</i>	<i>DHB2CMMED</i>	<i>DHB2CMLGE</i>

### 2-POINT DUAL CENTRE PULL



<i>X-SML</i>	<i>SML</i>	<i>MED</i>	<i>LGE</i>
<i>DHB2DPXSML</i>	<i>DHB2DPSML</i>	<i>DHB2DPMED</i>	<i>DHB2DPLGE</i>

# Hip Belts *cont.*

## 4-POINT CENTRE PULL SIDE RELEASE



<i>X-SML</i>	<i>SML</i>	<i>MED</i>	<i>LGE</i>
<i>DHB4CPXSML</i>	<i>DHB4CPSML</i>	<i>DHB4CPMED</i>	<i>DHB4CPLGE</i>

## 4-POINT CENTRE PULL CENTRE RELEASE



<i>SML</i>	<i>MED</i>	<i>LGE</i>
<i>DHB4CMSML</i>	<i>DHB4CMMED</i>	<i>DHB4CMLGE</i>

## 4-POINT DUAL CENTRE PULL



<i>X-SML</i>	<i>SML</i>	<i>MED</i>	<i>LGE</i>
<i>DHB4DPXSML</i>	<i>DHB4DPSML</i>	<i>DHB4DPMED</i>	<i>DHB4DPLGE</i>



# Hip Belts *cont.*

## 4-POINT REAR PULL SIDE RELEASE



<i>SML</i>	<i>MED</i>	<i>LGE</i>
<i>DHB4RPSML</i>	<i>DHB4RPMED</i>	<i>DHB4RPLGE</i>

## 4-POINT REAR PULL REAR RELEASE



<i>SML</i>	<i>MED</i>	<i>LGE</i>
<i>DHB4RMSML</i>	<i>DHB4RMMED</i>	<i>DHB4RMLGE</i>

# Hip Belt Accessories

## HIP BELT GEL PADS



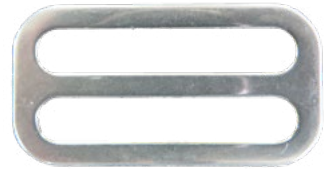
<i>SML</i>	<i>DHBGELSLVSML</i>
<i>MED</i>	<i>DHBGELSLVMED</i>
<i>LGE</i>	<i>DHBGELSLVLGE</i>

## TRI-BAR ADJUSTER 25MM



*DTBA25*

## TRI-BAR ADJUSTER 38MM



*DTBA38*

## TRIANGLE MOUNT 25MM



*DTRIMOUNT25*

## TRIANGLE MOUNT 38MM



*DTRIMOUNT38*

# Padded Calf Straps

Attached with four hook & loop straps around the wheelchair leg hanger posts.



WHEELCHAIR WIDTH	12"	14"	16"	17"	18"	20"	CUSTOM
CODE	DPCS12	DPCS14	DPCS16	DPCS17	DPCS18	DPCS20	DPCSCUST
W	315mm	365mm	415mm	440mm	470mm	520mm	XX
H	90mm	100mm	110mm	110mm	130mm	130mm	XX

# Padded Calf Strap Modifications

**BUCKLE ATTACHMENT MODIFICATION**



DPCSMODBK





*Dreamline Code Visual Directory 2023*

# › *Fasteners*

## Fasteners

### SWING-AWAY LATERAL TO BACKREST FASTENER KIT



CODE	CONSISTS OF:	SIZE	QTY
DFKLAT	STAINLESS STEEL COACH BOLT	M6 X 25mm	2
	STAINLESS STEEL NYLOC NUT	M6	2
	LARGE ALUMINIUM WASHER	M6 X 25mm	2
	FIXING PLATE (2 HOLE)	-	1

### LATERAL PAD FASTENER KIT (NON-PIVOT)



CODE	CONSISTS OF:	SIZE	QTY
DFKLATPADN	STAINLESS STEEL BUTTON HEX SCREW	M6 X 16mm	2
	STAINLESS STEEL SPRING WASHER	M6	2
	STAINLESS STEEL FLAT WASHER	M6 X 12mm	2

### LATERAL PAD FASTENER KIT (PIVOT)



CODE	CONSISTS OF:	SIZE	QTY
DFKLATPADP	STAINLESS STEEL BUTTON HEX SCREW	M6 X 20mm	2
	STAINLESS STEEL SPRING WASHER	M6	2

### HIP GUIDE BRACKET FASTENER KIT



CODE	CONSISTS OF:	SIZE	QTY
DFKHG	STAINLESS STEEL COACH BOLT	M6 X 25mm	2
	STAINLESS STEEL NYLOC NUT	M6	2
	LARGE ALUMINIUM WASHER	M6 X 25mm	2

## Fasteners cont.



### HEADREST BRACKET FASTENER KIT

CODE	CONSISTS OF:	SIZE	QTY
DFKHR	STAINLESS STEEL COACH BOLT	M6 X 20mm	2
	STAINLESS STEEL NYLOC NUT	M6	2
	STAINLESS STEEL FLAT WASHER	M6 X 12mm	2
	FIXING PLATE (3 HOLE)	-	1



### MEDIAL THIGH SUPPORT BRACKET FASTENER KIT

CODE	CONSISTS OF:	SIZE	QTY
DFKPSD	STAINLESS STEEL COACH BOLT	M6 X 20mm	2
	STAINLESS STEEL NYLOC NUT	M6	2
	LARGE ALUMINIUM WASHER	M6 X 25mm	2



### IGNITE PRO LATERAL EXTRA FASTENING KIT

CODE	CONSISTS OF:	SIZE	QTY
DFKIPB	STAINLESS STEEL COACH BOLT	M6 X 16mm	2
	STAINLESS STEEL NYLOC NUT	M6	2
	STAINLESS STEEL FLAT WASHER	M6 X 18mm	2



### HARNESS RETAINER FASTENING KIT

CODE	CONSISTS OF:	SIZE	QTY
DHRFK	STAINLESS STEEL COACH BOLT	M6 X 16mm	2
	STAINLESS STEEL NYLOC NUT	M6	2
	STAINLESS STEEL FLAT WASHER	M6 X 12mm	2

# Fasteners cont.

**M6 COACH NUT  
(PK OF 20)**



DFASCNM6

**HEADREST  
MOUNT KNOB**



DFASKNOBM6

**FIXING PLATE  
(2 HOLE) PK OF 20**



DFASFXP2HOLBPK20

**FIXING PLATE  
(3 HOLE) PK OF 20**



DFASFXP3HOLBPK20

**STAINLESS STEEL  
BUTTON HEX SCREW**



**STAINLESS STEEL  
CAP SCREW**



SIZE	CODE (PK OF 20)
M6 X 10mm	DFASBHM610SPK20
M6 X 12mm	DFASBHM612BPK20
M6 X 16mm	DFASBHM616BPK20
M6 x 20mm	DFASBHM620BPK20
M6 x 25mm	DFASBHM625BPK20
M6 x 30mm	DFASBHM630BPK20
M6 x 40mm	DFASBHM640BPK20

SIZE	CODE (PK OF 20)
M5 X 12mm	DFASCSM512SPK20
M5 x 20mm	DFASCSM520BPK20
M6 x 12mm	DFASCSM612BPK20
M6 x 25mm	DFASCSM625BPK20
M6 x 30mm	DFASCSM630BPK20
M6 x 35mm	DFASCSM635BPK20

**STAINLESS STEEL  
COUNTERSUNK HEX  
SCREW**



**STAINLESS STEEL  
COACH BOLT**



SIZE	CODE (PK OF 20)
M6 X 8mm	DFASCHSM608BPK20
M6 x 10mm	DFASCHSM610BPK20
M6 x 12mm	DFASCHSM612BPK20
M6 x 16mm	DFASCHSM616BPK20
M6 x 25mm	DFASCHSM625BPK20

SIZE	CODE (PK OF 20)
M6 X 16mm	DFASCBM616BPK20
M6 x 20mm	DFASCBM620BPK20
M6 x 25mm	DFASCBM625BPK20
M6 x 30mm	DFASCBM630BPK20
M6 x 50mm	DFASCBM650BPK20
M6 x 60mm	DFASCBM660BPK20



# Fasteners *cont.*

**NYLOC NUT**



SIZE	CODE (PK OF 20)
M5	DFASNMM5BPK20
M6	DFASNMM6BPK20

**LARGE ALUMINIUM WASHER**



DFASAWM625PK20
----------------

**STAINLESS STEEL FLAT WASHER**



SIZE	CODE (PK OF 20)
M6 x 12	DFASWFM612BPK20
M6 x 19	DFASWFM619BPK20

**STAINLESS STEEL SPRING WASHER**



SIZE	CODE (PK OF 20)
M6 x 12	DFASWSM6BPK20

**SUPPORT SERIES BACKREST PIN**



DFASSBPIN
-----------

**IGNITE SERIES BACKREST PIN**



DFASIBPIN
-----------

**SIDEWINDER SUSPENSION PIN**



DFASSSPIN
-----------

**IGNITE BACKREST SHROUD**



DFASIBSHD
-----------

**POSITIONING CLAMPS (PR)**



DSPCF
-------

- Can be used for hip-belt & harness attachment
- Fits tubing from 19mm (3/4") - 25.4mm (1")

# Dreamline Service Kits

## DREAMLINE ASSESSMENT KIT BAG - COMPLETE

DAKBC



### ASSESSMENT KIT INCLUDES

- Dreamline Assessment Kit Bag
- Dreamline Fabric Sample Swatch
- Dreamline Foam Sample Swatch
- Dreamline Gel & Supracor Sample Swatch
- Dreamline Colour Option Sample Swatch
- STX cushion Lateral Segment 3"
- STX cushion Lateral Segment 4"
- STX cushion Lateral Segment 6"
- STX cushion Low Lateral Segment 6"
- STX cushion Low Lateral Segment 8"
- STX Cushion BAC Kit of 10 pads
- Dreamline Cluster Gel Pack
- Dreamline Cluster Resilient Foam pack
- Dreamline Cluster Sunmate Foam pack

## DREAMLINE SERVICE KIT - FASTENERS

DSKF



### SERVICE KIT INCLUDES

- M6 Coach Nuts (PK20)
- Headrest Mount Knob (2)
- Fixing Plate (2HOLE) (PK20)
- Fixing Plate (3HOLE) (PK20)
- Tool Kit and Spanner
- Nyloc Nut M6 (PK20)
- Large Aluminium Washer (PK20)
- SS Coach Bolt M6x16 (PK20)
- SS Coach Bolt M6x20 (PK20)
- SS Coach Bolt M6x25 (PK20)
- Ignite Backrest Shroud (PK4)
- Cap Screw M5x20 (PK20)
- SS Button Screw M6x12 (PK20)
- SS Button Screw M6x16 (PK20)
- SS Button Screw M6x20 (PK20)
- SS Button Screw M6x25 (PK20)
- SS Button Screw M6x30 (PK20)
- Flat Washer M6x12 (PK20)
- Flat Washer M6x19 (PK20)
- Spring Washer M6 (PK20)
- SS Countersunk Socket Screw M5x10 (PK20)
- SS Countersunk Socket Screw M6x8 (PK20)
- SS Countersunk Socket Screw M6x16 (PK20)
- SS Countersunk Socket Screw M6x25 (PK20)
- Cap Screw M6x12 (PK20)

# ***Dreamline Service Kits cont.***

## ***DREAMLINE DEMO SEAT SYSTEM FULL KIT 1416***

DDSFK1416



### ***SERVICE KIT INCLUDES***

- *Display Stand*
- *Display Carry Bag*
- *Dreamline G7 Cushion Complete - With Gel Ischial well - 14" x 16"*
- *Dreamline STX Backrest - Q/R Complete 14" x 16"*
- *Dreamline Quick-Release Seat Pan 14" x 16"*
- *Hip Guide / Armrest Swing Down Quick Release Bracket Only*
- *Hip Guide / Armrest Swing Down Quick Release Pivot Bracket Only*
- *Hip Guide Pad Only - Complete - 14"*
- *Armrest Complete Including Vertical Stem - 14"*
- *Dreamline Saddleback Headrest Bracket - Swing-down - Complete*
- *Pivot-wing Headrest Pad Only - Small*
- *Dreamline Swing-away Lateral Bracket Only - Complete - Right*
- *Dreamline Lo-riser Swing-away Pivot Lateral Bracket Only Complete - Left*
- *Dreamline Lateral Teardrop Pad Only - Small*
- *Dreamline Lateral Anterior Pad Only - Small*
- *Swing-down Abductor Pommel - Bracket Only*
- *Swing-down Abductor Pommel - Pad Only - Small*
- *H2X Harness - Small*
- *H2X Harness - Protector Sleeves - Small*
- *Full Seating System Custom Colour Borders Blue*
- *Dreamline 4 Point Hip Belt - Rear Pull With Metal Centre Release Buckle - Small*





*Dreamline Code Visual Directory 2023*

› ***Splash***

*Commode Backrests & Accessories*

## *Splash Backrests*



*Splash commode Backrests enable the prescriber to replicate the set-up from the Dreamline Seating into the commode.*

*Splash pads use the bracketry from the Dreamline range as they are constructed from water resistant materials - Anodised Aluminium & Stainless Steel.*

# Splash Backrests *cont.*

## SPLASH CONTOUR BACKREST (FIXED)



<i>SCBF1414</i>	<i>SCBF1416</i>	<i>SCBF1418</i>	<i>SCBF1420</i>	<i>SCBF1616</i>	<i>SCBF1618</i>
<i>SCBF1620</i>	<i>SCBF1622</i>	<i>SCBF1816</i>	<i>SCBF1818</i>	<i>SCBF1820</i>	<i>SCBF1822</i>
<i>SCBF2018</i>	<i>SCBF2020</i>	<i>SCBF2022</i>	<i>SCBFCUST</i>	<i>SCBFCUSTXL</i>	

## SPLASH SUPPORT BACKREST - FIXED



<i>SSBF1414</i>	<i>SSBF1416</i>	<i>SSBF1418</i>	<i>SSBF1420</i>	<i>SSBF1616</i>	<i>SSBF1618</i>
<i>SSBF1620</i>	<i>SSBF1622</i>	<i>SSBF1816</i>	<i>SSBF1818</i>	<i>SSBF1820</i>	<i>SSBF1822</i>
<i>SSBF2018</i>	<i>SSBF2020</i>	<i>SSBF2022</i>	<i>SSBFCUST</i>	<i>SSBFCUSTXL</i>	

## SPLASH S3 BACKREST - FIXED



<i>S3BF1414</i>	<i>S3BF1416</i>	<i>S3BF1418</i>	<i>S3BF1420</i>	<i>S3BF1616</i>	<i>S3BF1618</i>
<i>S3BF1620</i>	<i>S3BF1622</i>	<i>S3BF1816</i>	<i>S3BF1818</i>	<i>S3BF1820</i>	<i>S3BF1822</i>
<i>S3BF2018</i>	<i>S3BF2020</i>	<i>S3BF2022</i>	<i>S3BFCUST</i>	<i>S3BFCUSTXL</i>	

# Splash Backrest Accessories

## PARTS FOR SPLASH CONTOUR BACKRESTS



<i>SCB1414</i>	<i>SCB1416</i>	<i>SCB1418</i>	<i>SCB1420</i>	<i>SCB1616</i>	<i>SCB1618</i>
<i>SCB1620</i>	<i>SCB1622</i>	<i>SCB1816</i>	<i>SCB1818</i>	<i>SCB1820</i>	<i>SCB1822</i>
<i>SCB2018</i>	<i>SCB2020</i>	<i>SCB2022</i>	<i>SCBCUST</i>	<i>SCBCUSTXL</i>	

*Outer Cover only add "OC" to end of code • Shell & Pad only add "SP" to end of code  
Foam Inner & Outer Cover only add "FC" to the end of code*

## PARTS FOR SPLASH SUPPORT BACKRESTS



<i>SSB1414</i>	<i>SSB1416</i>	<i>SSB1418</i>	<i>SSB1420</i>	<i>SSB1616</i>	<i>SSB1618</i>
<i>SSB1620</i>	<i>SSB1622</i>	<i>SSB1816</i>	<i>SSB1818</i>	<i>SSB1820</i>	<i>SSB1822</i>
<i>SSB2018</i>	<i>SSB2020</i>	<i>SSB2022</i>	<i>SSBCUST</i>	<i>SSBCUSTXL</i>	

*Outer Cover only add "OC" to end of code • Shell & Pad only add "SP" to end of code  
Foam Inner & Outer Cover only add "FC" to the end of code*

## PARTS FOR SPLASH S3 BACKRESTS



<i>S3B1414</i>	<i>S3B1416</i>	<i>S3B1418</i>	<i>S3B1420</i>	<i>S3B1616</i>	<i>S3B1618</i>
<i>S3B1620</i>	<i>S3B1622</i>	<i>S3B1816</i>	<i>S3B1818</i>	<i>S3B1820</i>	<i>S3B1822</i>
<i>S3B2018</i>	<i>S3B2020</i>	<i>S3B2022</i>	<i>S3BCUST</i>	<i>S3BCUSTXL</i>	

*Outer Cover only add "OC" to end of code • Shell & Pad only add "SP" to end of code  
Foam Inner & Outer Cover only add "FC" to the end of code*



# *Splash Backrest Accessories cont.*

**SPLASH BAC SYSTEM  
(FOR SPLASH SUPPORT  
BACKRESTS)**



<i>SBACSB1414</i>	<i>SBACSB1416</i>	<i>SBACSB1418</i>	<i>SBACSB1420</i>	<i>SBACSB1616</i>	<i>SBACSB1618</i>
<i>SBACSB1620</i>	<i>SBACSB1622</i>	<i>SBACSB1816</i>	<i>SBACSB1818</i>	<i>SBACSB1820</i>	<i>SBACSB1822</i>
<i>SBACSB2018</i>	<i>SBACSB2020</i>	<i>SBACSB2022</i>	<i>SBACSBUCUST</i>	<i>SBACSBUCUSTXL</i>	

# Splash Trunk Lateral Support Pads

(Uses Dreamline Bracketry)

## STRAIGHT LATERAL PAD



	SIZE	L	H	C
SLPPSXSMML	X-SML	145mm	105mm	0
SLPPSSMML	SML	155mm	110mm	0
SLPPSMED	MED	172mm	117mm	0
SLPPSLGE	LGE	203mm	140mm	0

## CURVED LATERAL PAD



	SIZE	L	H	C
SLPPCXSMML	X-SML	145mm	105mm	20mm
SLPPCSMML	SML	155mm	110mm	25mm
SLPPCMED	MED	172mm	117mm	28mm
SLPPCLGE	LGE	203mm	140mm	35mm

## TEARDROP LATERAL PAD



	SIZE	L	H	C
SLPPTDSMML	SML	155mm.	155mm	15mm
SLPPTDMED	MED	170mm	187mm	17mm
SLPPTDLGE	LGE	190mm	227mm	20mm
SLPPCUSTXL	CUSTOM	XXX	XX	XXX

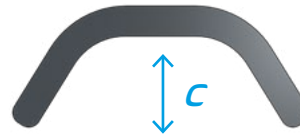
# Splash Headrest Pads

## SPLASH ASSIST HEADREST PAD



CODE	SIZE	W	H	C
SHPASML	SML	220mm	117mm	20mm
SHPALGE	LGE	240mm	125mm	25mm

## SPLASH CONTOURED HEADREST PAD



CODE	SIZE	W	H	C
SHPCVXSML	X-SML	160mm	95mm	50mm
SHPCVSML	SML	230mm	117mm	100mm
SHPCVLGE	LGE	270mm	140mm	115mm

## SPLASH OPEN-CURVED HEADREST PAD



CODE	SIZE	W	H	C
SHPOCSML	SML	300mm	150mm	35mm
SHPOCLGE	LGE	400mm	185mm	35mm

# Splash Headrest Pads cont.

**SPLASH  
PIVOT-WING  
HEADREST PAD**



CODE	SIZE	W	H	WL	WH
SHPPWSML	SML	185mm	140mm	118mm	80mm
SHPPWLGE	LGE	205mm	158mm	118mm	80mm

# Splash H2X Harness & Hip Belts

Splash harnesses & hip-belts have a special water repelling coated neoprene fabric for quicker dry time.

Splash harness sizing is identical to Dreamline Harness sizes.



<i>CODE</i>
<i>SH2XXSML</i>
<i>SH2XSML</i>
<i>SH2XMED</i>
<i>SH2XLGE</i>
<i>SH2XXLGE</i>

## 2-POINT CENTRE PULL SIDE RELEASE



<i>X-SML</i>	<i>SML</i>	<i>MED</i>	<i>LGE</i>
<i>SHB2CPXSML</i>	<i>SHB2CPSML</i>	<i>SHB2CPMED</i>	<i>SHB2CPLGE</i>

## 2-POINT DUAL CENTRE PULL



<i>X-SML</i>	<i>SML</i>	<i>MED</i>	<i>LGE</i>
<i>SHB2DPXSML</i>	<i>SHB2DPSML</i>	<i>SHB2DPMED</i>	<i>SHB2DPLGE</i>

# Splash Hip Belts *cont.*

## 4-POINT CENTRE PULL SIDE RELEASE



<i>X-SML</i>	<i>SML</i>	<i>MED</i>	<i>LGE</i>
<i>SHB4CPXSML</i>	<i>SHB4CPSML</i>	<i>SHB4CPMED</i>	<i>SHB4CPLGE</i>

## 4-POINT DUAL CENTRE PULL



<i>X-SML</i>	<i>SML</i>	<i>MED</i>	<i>LGE</i>
<i>SHB4DPXSML</i>	<i>SHB4DPSML</i>	<i>SHB4DPMED</i>	<i>SHB4DPLGE</i>

## 4-POINT REAR PULL SIDE RELEASE



<i>SML</i>	<i>MED</i>	<i>LGE</i>
<i>SHB4RPSML</i>	<i>SHB4RPMED</i>	<i>SHB4RPLGE</i>









*Dreamline Code Visual Directory 2023*

# › *Snooza Seating System*

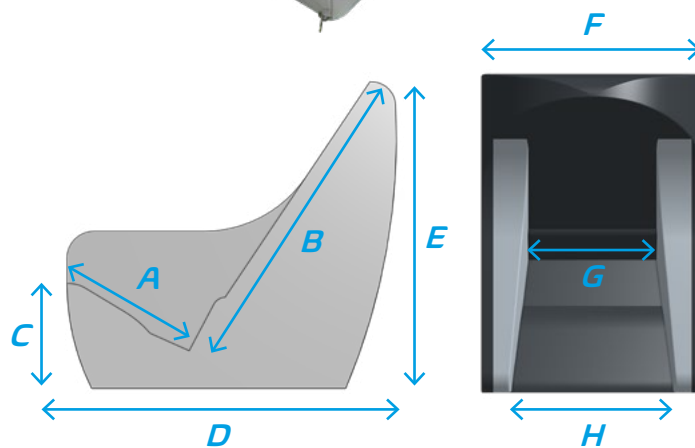
# Snooza Seating System

The all-foam Snooza Chair offers the user a safe, comfortable and supportive postural management inside the house, school or facility giving carers peace of mind.

Covered in medical grade vinyl with wipe-down surfaces and a breathable, washable comfort wrap, the Snooza Chair is easy care.

The Snooza chair is great for use with patients with epilepsy, autism and cerebral palsy etc. Gravity helps to keep the user safely in a mid-line position. The higher arm rest position promotes better blood flow and the softness of the seat allows the user to extend (e.g. during a seizure) then gently bringing them back into position.

Carry Handles make for easy transportation and large pockets are located on each side.



## THE STANDARD KIT INCLUDES

- 1 x Chair
  - 1 x Comfort Wrap
  - 1 x Base Wedge
  - 1 x Hip Belt
- (Headrest is sold separately)

CHAIR SIZE	A) Seat Depth	B) Backrest Height	C) Floor to Seat Height	D) Overall Length	E) Overall Height	F) Overall Width	G) Seat Width at Pelvis	H) Seat Width at Front	I) Chair Weight
1	240mm	580mm	215mm	635mm	570mm	455mm	230mm	310mm	5.5kg
2	290mm	670mm	245mm	710mm	640mm	480mm	270mm	330mm	6kg
3	370mm	725mm	280mm	810mm	690mm	565mm	320mm	405mm	7.6kg
4	425mm	780mm	310mm	905mm	740mm	600mm	340mm	425mm	9.4kg

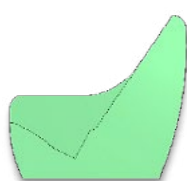
## COLOUR OPTIONS



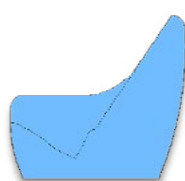
GREY



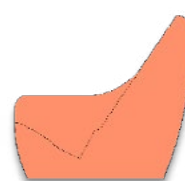
BLACK



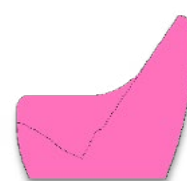
APPLE



ROYAL BLUE



ORANGE



HOT PINK

## Snooza Seating System *cont.*



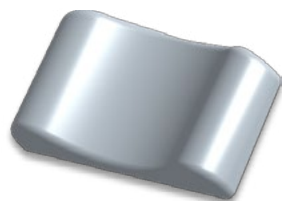
• Excludes Headrest

<b>CODE</b>	<b>DESCRIPTION</b>
<b>SNZAC1A</b>	<b><i>Snooza Chair with vinyl covers - Without Headrest - Size 1 Colour Apple</i></b>
<b>SNZAC1B</b>	<b><i>Snooza Chair with vinyl covers - Without Headrest - Size 1 Colour Royal Blue</i></b>
<b>SNZAC1BLK</b>	<b><i>Snooza Chair with vinyl covers - Without Headrest - Size 1 Colour Black</i></b>
<b>SNZAC1GRY</b>	<b><i>Snooza Chair with vinyl covers - Without Headrest - Size 1 Colour Grey</i></b>
<b>SNZAC1O</b>	<b><i>Snooza Chair with vinyl covers - Without Headrest - Size 1 Colour Orange</i></b>
<b>SNZAC1P</b>	<b><i>Snooza Chair with vinyl covers - Without Headrest - Size 1 Colour Hot Pink</i></b>
<b>SNZAC2A</b>	<b><i>Snooza Chair with vinyl covers - Without Headrest - Size 2 Colour Apple</i></b>
<b>SNZAC2B</b>	<b><i>Snooza Chair with vinyl covers - Without Headrest - Size 2 Colour Royal Blue</i></b>
<b>SNZAC2BLK</b>	<b><i>Snooza Chair with vinyl covers - Without Headrest - Size 2 Colour Black</i></b>
<b>SNZAC2GRY</b>	<b><i>Snooza Chair with vinyl covers - Without Headrest - Size 2 Colour Grey</i></b>
<b>SNZAC2O</b>	<b><i>Snooza Chair with vinyl covers - Without Headrest - Size 2 Colour Orange</i></b>
<b>SNZAC2P</b>	<b><i>Snooza Chair with vinyl covers - Without Headrest - Size 2 Colour Hot Pink</i></b>
<b>SNZAC3A</b>	<b><i>Snooza Chair with vinyl covers - Without Headrest - Size 3 Colour Apple</i></b>
<b>SNZAC3B</b>	<b><i>Snooza Chair with vinyl covers - Without Headrest - Size 3 Colour Royal Blue</i></b>
<b>SNZAC3BLK</b>	<b><i>Snooza Chair with vinyl covers - Without Headrest - Size 3 Colour Black</i></b>
<b>SNZAC3GRY</b>	<b><i>Snooza Chair with vinyl covers - Without Headrest - Size 3 Colour Grey</i></b>
<b>SNZAC3O</b>	<b><i>Snooza Chair with vinyl covers - Without Headrest - Size 3 Colour Orange</i></b>
<b>SNZAC3P</b>	<b><i>Snooza Chair with vinyl covers - Without Headrest - Size 3 Colour Hot Pink</i></b>
<b>SNZAC4A</b>	<b><i>Snooza Chair with vinyl covers - Without Headrest - Size 4 Colour Apple</i></b>
<b>SNZAC4B</b>	<b><i>Snooza Chair with vinyl covers - Without Headrest - Size 4 Colour Royal Blue</i></b>
<b>SNZAC4BLK</b>	<b><i>Snooza Chair with vinyl covers - Without Headrest - Size 4 Colour Black</i></b>
<b>SNZAC4GRY</b>	<b><i>Snooza Chair with vinyl covers - Without Headrest - Size 4 Colour Grey</i></b>
<b>SNZAC4O</b>	<b><i>Snooza Chair with vinyl covers - Without Headrest - Size 4 Colour Orange</i></b>
<b>SNZAC4P</b>	<b><i>Snooza Chair with vinyl covers - Without Headrest - Size 4 Colour Hot Pink</i></b>

# Snooza Headrest Options

## LOW PROFILE HEADREST

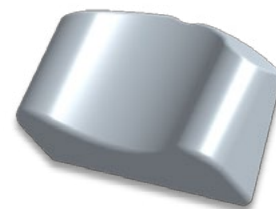
(15mm behind neck)



SNZAHRLP

## STANDARD HEADREST

(50mm behind neck)



SNVAHRVIN

## DEEP CONTOUR HEADREST

(15mm behind neck & 130mm deep lateral)



SNZAHRLS

# Snooza Medial Thigh Support

## STANDARD MEDIAL THIGH SUPPORT



## SHORT MEDIAL THIGH SUPPORT

(for use with leg-rests)



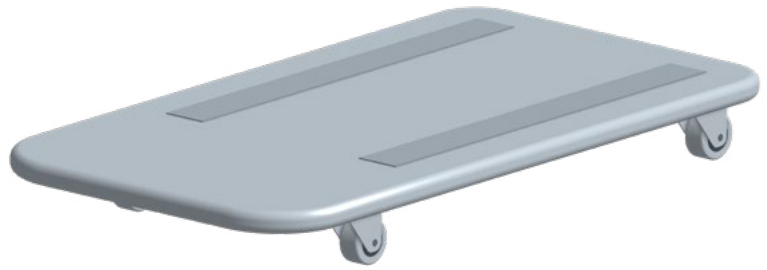
SIZE	CODE	
1	SNZAPOMVIN1	
2	SNZAPOMVIN2	
1	SNZAPOMVIN1BLK	(black cover)
2	SNZAPOMVIN2BLK	(black cover)

SIZE	CODE	
1	SNZAPOMSVIN1	
2	SNZAPOMSVIN2	
1	SNZAPOMSVIN1BLK	(black cover)
2	SNZAPOMSVIN2BLK	(black cover)

**NOTE:** the Size 1 Medial Thigh Support fits both the Size 1 & 2 Snooza chairs • The Size 2 Medial Thigh Support fits both the size 3 & size 4 Snooza chairs

**NOTE:** the Size 1 Medial Thigh Support fits both the Size 1 & 2 Snooza chairs • The Size 2 Medial Thigh Support fits both the size 3 & size 4 Snooza chairs

# Snooza Mobile Base



<i>SIZE</i>	<i>CODE</i>	<i>DESCRIPTION</i>
<i>1</i>	<i>SNZAMOBAS1</i>	<i>Snooza Mobile Base Grey - 4 locking 50mm swivel castors - Size 1 (Suits sizes 1 &amp; 2)</i>
<i>2</i>	<i>SNZAMOBAS2</i>	<i>Snooza Mobile Base Grey - 4 locking 50mm swivel castors - Size 2 (Suits sizes 3 &amp; 4)</i>
<i>1</i>	<i>SNZAMOBAS1A</i>	<i>Snooza Mobile Base Grey - 4 locking 75mm swivel castors - Size 1 (Suits sizes 1 &amp; 2)</i>
<i>2</i>	<i>SNZAMOBAS2A</i>	<i>Snooza Mobile Base Grey - 4 locking 75mm swivel castors - Size 2 (Suits sizes 3 &amp; 4)</i>
<i>1</i>	<i>SNZAMOBAS1BLK</i>	<i>Snooza Mobile Base Black - 4 locking 50mm swivel castors - Size 1 (Suits sizes 1 &amp; 2)</i>
<i>2</i>	<i>SNZAMOBAS2BLK</i>	<i>Snooza Mobile Base Black - 4 locking 50mm swivel castors - Size 2 (Suits sizes 3 &amp; 4)</i>
<i>1</i>	<i>SNZAMOBAS1ABLK</i>	<i>Snooza Mobile Base Black - 4 locking 75mm swivel castors - Size 1 (Suits sizes 1 &amp; 2)</i>
<i>2</i>	<i>SNZAMOBAS2ABLK</i>	<i>Snooza Mobile Base Black - 4 locking 75mm swivel castors - Size 2 (Suits sizes 3 &amp; 4)</i>

**NOTE:** the Size 1 Mobile Base fits both the Size 1 & 2 Snooza chairs • The Size 2 Mobile Base fits both the size 3 & size 4 Snooza chairs

# Snooza Side Infill Pads

- Sold in pairs
- Reduces the width space for growth



SIZE	CODE	DESCRIPTION
1	SNZAIPADV1A	Snooza infil pads (P/R) for w/adjustment - vinyl covers - Size 1 Colour Apple
1	SNZAIPADV1B	Snooza infil pads (P/R) for w/adjustment - vinyl covers - Size 1 Colour Royal Blue
1	SNZAIPADV1BLK	Snooza infil pads (P/R) for w/adjustment - vinyl covers - Size 1 Colour Black
1	SNZAIPADV1GRY	Snooza infil pads (P/R) for w/adjustment - vinyl covers - Size 1 Colour Grey
1	SNZAIPADV1O	Snooza infil pads (P/R) for w/adjustment - vinyl covers - Size 1 Colour Orange
1	SNZAIPADV1P	Snooza infil pads (P/R) for w/adjustment - vinyl covers - Size 1 Colour Hot Pink
2	SNZAIPADV2A	Snooza infil pads (P/R) for w/adjustment - vinyl covers - Size 2 Colour Apple
2	SNZAIPADV2B	Snooza infil pads (P/R) for w/adjustment - vinyl covers - Size 2 Colour Royal Blue
2	SNZAIPADV2BLK	Snooza infil pads (P/R) for w/adjustment - vinyl covers - Size 2 Colour Black
2	SNZAIPADV2GRY	Snooza infil pads (P/R) for w/adjustment - vinyl covers - Size 2 Colour Grey
2	SNZAIPADV2O	Snooza infil pads (P/R) for w/adjustment - vinyl covers - Size 2 Colour Orange
2	SNZAIPADV2P	Snooza infil pads (P/R) for w/adjustment - vinyl covers - Size 2 Colour Hot Pink
3	SNZAIPADV3A	Snooza infil pads (P/R) for w/adjustment - vinyl covers - Size 3 Colour Apple
3	SNZAIPADV3B	Snooza infil pads (P/R) for w/adjustment - vinyl covers - Size 3 Colour Royal Blue
3	SNZAIPADV3BLK	Snooza infil pads (P/R) for w/adjustment - vinyl covers - Size 3 Colour Black
3	SNZAIPADV3GRY	Snooza infil pads (P/R) for w/adjustment - vinyl covers - Size 3 Colour Grey
3	SNZAIPADV3O	Snooza infil pads (P/R) for w/adjustment - vinyl covers - Size 3 Colour Orange
3	SNZAIPADV3P	Snooza infil pads (P/R) for w/adjustment - vinyl covers - Size 3 Colour Hot Pink
4	SNZAIPADV4A	Snooza infil pads (P/R) for w/adjustment - vinyl covers - Size 4 Colour Apple
4	SNZAIPADV4B	Snooza infil pads (P/R) for w/adjustment - vinyl covers - Size 4 Colour Royal Blue
4	SNZAIPADV4BLK	Snooza infil pads (P/R) for w/adjustment - vinyl covers - Size 4 Colour Black
4	SNZAIPADV4GRY	Snooza infil pads (P/R) for w/adjustment - vinyl covers - Size 4 Colour Grey
4	SNZAIPADV4O	Snooza infil pads (P/R) for w/adjustment - vinyl covers - Size 4 Colour Orange
4	SNZAIPADV4P	Snooza infil pads (P/R) for w/adjustment - vinyl covers - Size 4 Colour Hot Pink

# Snooza Seat Accessories

## **SNOOZA BACKREST DEPTH ADJUSTMENT KIT**

*(for seat-depth growth  
adjustment)*

- Sold in packs of 2 (each packer is 35mm thick)



<i>SIZE</i>	<i>CODE</i>	<i>DESCRIPTION</i>
1	SNZABRDAK1	SNOOZA BACKREST DEPTH ADJUSTMENT KIT - Grey Size 1
2	SNZABRDAK2	SNOOZA BACKREST DEPTH ADJUSTMENT KIT - Grey Size 2
3	SNZABRDAK3	SNOOZA BACKREST DEPTH ADJUSTMENT KIT - Grey Size 3
4	SNZABRDAK4	SNOOZA BACKREST DEPTH ADJUSTMENT KIT - Grey Size 4
1	SNZABRDAK1BLK	SNOOZA BACKREST DEPTH ADJUSTMENT KIT - Black Size 1
2	SNZABRDAK2BLK	SNOOZA BACKREST DEPTH ADJUSTMENT KIT - Black Size 2
3	SNZABRDAK3BLK	SNOOZA BACKREST DEPTH ADJUSTMENT KIT - Black Size 3
4	SNZABRDAK4BLK	SNOOZA BACKREST DEPTH ADJUSTMENT KIT - Black Size 4

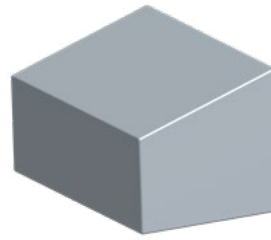
## **SNOOZA TRAY**



<i>SIZE</i>	<i>CODE</i>	<i>DESCRIPTION</i>
1	SNZATRAY1	Snooza Padded Tray with grey vinyl cover - Size 1
2	SNZATRAY2	Snooza Padded Tray with grey vinyl cover - Size 2
3	SNZATRAY3	Snooza Padded Tray with grey vinyl cover - Size 3
4	SNZATRAY4	Snooza Padded Tray with grey vinyl cover - Size 4
1	SNZATRAY1BLK	Snooza Padded Tray with black vinyl cover - Size 1
2	SNZATRAY2BLK	Snooza Padded Tray with black vinyl cover - Size 2
3	SNZATRAY3BLK	Snooza Padded Tray with black vinyl cover - Size 3
4	SNZATRAY4BLK	Snooza Padded Tray with black vinyl cover - Size 4



# Snooza Seat Accessories *cont.*

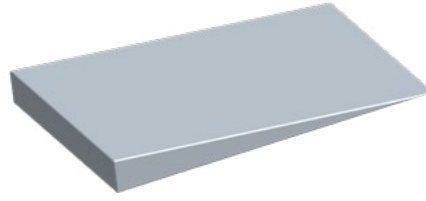


## **SNOOZA LEG REST**

<b>SIZE</b>	<b>CODE</b>	<b>DESCRIPTION</b>
1	SNZALR1A	Snooza Leg rest complete with Vinyl cover - Size 1 Colour Apple
1	SNZALR1B	Snooza Leg rest complete with Vinyl cover - Size 1 Royal Blue
1	SNZALR1BLK	Snooza Leg rest complete with Vinyl cover - Size 1 Black
1	SNZALR1GRY	Snooza Leg rest complete with Vinyl cover - Size 1 Grey
1	SNZALR1O	Snooza Leg rest complete with Vinyl cover - Size 1 Colour Orange
1	SNZALR1P	Snooza Leg rest complete with Vinyl cover - Size 1 Colour Hot Pink
2	SNZALR2A	Snooza Leg rest complete with Vinyl cover - Size 2 Colour Apple
2	SNZALR2B	Snooza Leg rest complete with Vinyl cover - Size 2 Royal Blue
2	SNZALR2BLK	Snooza Leg rest complete with Vinyl cover - Size 2 Black
2	SNZALR2GRY	Snooza Leg rest complete with Vinyl cover - Size 2 Grey
2	SNZALR2O	Snooza Leg rest complete with Vinyl cover - Size 2 Colour Orange
2	SNZALR2P	Snooza Leg rest complete with Vinyl cover - Size 2 Colour Hot Pink
3	SNZALR3A	Snooza Leg rest complete with Vinyl cover - Size 3 Colour Apple
3	SNZALR3B	Snooza Leg rest complete with Vinyl cover - Size 3 Royal Blue
3	SNZALR3BLK	Snooza Leg rest complete with Vinyl cover - Size 3 Black
3	SNZALR3GRY	Snooza Leg rest complete with Vinyl cover - Size 3 Grey
3	SNZALR3O	Snooza Leg rest complete with Vinyl cover - Size 3 Colour Orange
3	SNZALR3P	Snooza Leg rest complete with Vinyl cover - Size 3 Colour Hot Pink
4	SNZALR4A	Snooza Leg rest complete with Vinyl cover - Size 4 Colour Apple
4	SNZALR4B	Snooza Leg rest complete with Vinyl cover - Size 4 Royal Blue
4	SNZALR4BLK	Snooza Leg rest complete with Vinyl cover - Size 4 Black
4	SNZALR4GRY	Snooza Leg rest complete with Vinyl cover - Size 4 Grey
4	SNZALR4O	Snooza Leg rest complete with Vinyl cover - Size 4 Colour Orange
4	SNZALR4P	Snooza Leg rest complete with Vinyl cover - Size 4 Colour Hot Pink



## ***Snooza Seat Accessories cont.***



### **SNOOZA EXTRA BASE WEDGE**

<i>SIZE</i>	<i>CODE</i>	<i>DESCRIPTION</i>
<i>1</i>	<i>SNZAWG1</i>	<i>Snooza Base Wedge complete with Grey Vinyl cover - Size 1</i>
<i>2</i>	<i>SNZAWG2</i>	<i>Snooza Base Wedge complete with Grey Vinyl cover - Size 2</i>
<i>3</i>	<i>SNZAWG3</i>	<i>Snooza Base Wedge complete with Grey Vinyl cover - Size 3</i>
<i>4</i>	<i>SNZAWG4</i>	<i>Snooza Base Wedge complete with Grey Vinyl cover - Size 4</i>
<i>1</i>	<i>SNZAWG1BLK</i>	<i>Snooza Base Wedge complete with Black Vinyl cover - Size 1</i>
<i>2</i>	<i>SNZAWG2BLK</i>	<i>Snooza Base Wedge complete with Black Vinyl cover - Size 2</i>
<i>3</i>	<i>SNZAWG3BLK</i>	<i>Snooza Base Wedge complete with Black Vinyl cover - Size 3</i>
<i>4</i>	<i>SNZAWG4BLK</i>	<i>Snooza Base Wedge complete with Black Vinyl cover - Size 4</i>

ROLAPAL

ROLAPAL LTD | [INFO@ROLAPAL.CO.NZ](mailto:INFO@ROLAPAL.CO.NZ)  
[WWW.ROLAPAL.CO.NZ](http://WWW.ROLAPAL.CO.NZ) | P + 64 9 634 2300

# Dreamline

WHEELCHAIR SEATING



Visual Code  
Directory