

# Dreamline

## CUSHIONS

### INSTALLATION & USER MANUAL



**Assist Cushion**



**Support Cushion**



**Contour Cushion**



**G3 Cushion**








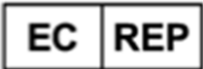




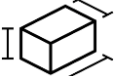


**STX Cushion**

## CONTENTS:



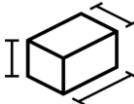
	<b>PAGE</b>
Items included in this package	5
Installation instructions	6
Fitting the cushion to the user	7
Adjusting Dreamline assist, support & contour cushions	7
Adjusting STX & G3 cushions	8
Other accessories	8
Intended use	12
Caution - risks identified	12
Disclaimer	12
Product life expectancy	13
Warranty	13
Caring for your cushion	14

## SYMBOLS

	Identifies products that meet the requirements of Regulation 2017/745 / EU on medical devices		Batch code
	Indicates that a product is a medical device		Catalogue number
	Shows the manufacturer of the medical device		Date of manufacture
	WC20 & ISO7176-19 certified for forward facing use in a motor vehicle		Authorized representative in the European Community
	Product weight (kgs)		Consult instructions for use
	Max User Weight (kgs)		Warnings
	Product Dimensions		

	<p><b>DREAMLINE ASSIST, SUPPORT &amp; CONTOUR CUSHIONS</b></p> <p>The Bubble Contour series. This series of foam cushions use their unique shape design to increase immersion &amp; envelopment. The <i>Assist</i> cushion has a 15mm contour profile, the <i>Support</i> cushion has a 35mm contour profile &amp; the <i>Contour</i> cushion a 60mm contour profile.</p>
	<p><b>G3 &amp; STX CUSHIONS</b></p> <p>The Adjuster series. These Gel cushions enable the installer various levels of adjustment to configure the cushion to suit both symmetrical &amp; asymmetrical postures. The G3 cushion has a low 20mm contour profile &amp; the STX a 80mm high contour profile with increased adjustability.</p>

## WEIGHTS & DIMENSIONS

ITEM			
<b>Bubble Contour Cushions</b>	Up to 1.9	Up to 120kg	Up to 51cm x 56cm x 12cm
<b>G3 Cushion</b>	Up to 3.5	136kg	Up to 51cm x 56cm x 9cm
<b>STX Cushion</b>	Up to 3.5	136kg	Up to 51cm x 56cm x 16cm

**ASSIST**

<b>DAC0808</b>	DAC0810	DAC1010	DAC1012	DAC1212	DAC1214	DAC1414
<b>DAC1416</b>	DAC1418	DAC1515	DAC1516	DAC1517	DAC1616	DAC1618
<b>DAC1620</b>	DAC1717	DAC1719	DAC1816	DAC1818	DAC1820	DAC1919
<b>DAC2018</b>	DAC2020	DAC2218	DAC2220	DAC2222	DAC2420	DAC2422
<b>DAC2424</b>	DACCUST	DACCUSTXL				

**SUPPORT**

<b>DSC0808</b>	DSC0810	DSC1010	DSC1012	DSC1212	DSC1214	DSC1414
<b>DSC1416</b>	DSC1418	DSC1515	DSC1516	DSC1517	DSC1616	DSC1618
<b>DSC1620</b>	DSC1717	DSC1719	DSC1816	DSC1818	DSC1820	DSC1919
<b>DSC2018</b>	DSC2020	DSC2218	DSC2220	DSC2222	DSC2420	DSC2422
<b>DSC2424</b>	DSCCUST	DSCCUSTXL				

**CONTOUR**

<b>DCC0808</b>	DCC0810	DCC1010	DCC1012	DCC1212	DCC1214	DCC1414
<b>DCC1416</b>	DCC1418	DCC1515	DCC1516	DCC1517	DCC1616	DCC1618
<b>DCC1620</b>	DCC1717	DCC1719	DCC1816	DCC1818	DCC1820	DCC1919
<b>DCC2018</b>	DCC2020	DCC2218	DCC2220	DCC2222	DCC2420	DCC2422
<b>DCC2424</b>	DCCCUST	DCCCUSTXL				

**G3**

			DGC1212	DGC1214	DGC1414	
<b>DGC1418</b>	DGC1515	DGC1516	DGC1517	DGC1616	DGC1618	
<b>DGC1717</b>	DGC1719	DGC1816	DGC1818	DGC1820	DGC1919	
<b>DGC2020</b>	DGC2218	DGC2220	DGC2222	DGC2420	DGC2422	
<b>DGCCUST</b>	DGCCUSTXL					

**DXC**

			DXC1212	DXC1214	DXC1414	
<b>DXC1418</b>	DXC1515	DXC1516	DXC1517	DXC1616	DXC1618	
<b>DXC1717</b>	DXC1719	DXC1816	DXC1818	DXC1820	DXC1919	
<b>DXC2020</b>	DXC2218	DXC2220	DXC2222	DXC2420	DXC2422	
<b>DXCCUST</b>	DXCCUSTXL					

## INCLUDED IN THIS PACKAGE

### Dreamline Assist, Support & Contour Cushions



Pelvic Obliquity Pads x 4



Outer Breathable Cover x 1

Incontinence Cover x 1

Foam Inner x 1

### Dreamline G3 Cushion



Outer Breathable cover x 1

Incontinence Cover x 1

Gel or Foam cluster packs  
(see separate table for qty)

Comfort Wrap x 1

Cushion Base x 1

### Dreamline STX Cushion



STX Cushion Positioning Pads

G3 Cushion Positioning Pads

- Adjustable Pommel x 1
- Pre-ischial shelf pieces x 2
- Pre-ischial shelf wedge x 1
- Pelvic Lateral stability wedges x 2
- BAC positioning pads (10pk)

- Adjustable Pommel Left / Right x 1pr
- Pre-ischial shelf pieces x 2
- Pre-ischial shelf wedge x 1
- Laterals x 2
- BAC positioning pads (10pk)

#### GEL / FOAM PILLOW PACKS INCLUDED WITH THIS CUSHION

12 x 12 - 3 packs	12 x 14 - 3 packs	14 x 14 - 4 packs	14 x 16 - 4 packs	14 x 18 - 6 packs	16 x 16 - 4 packs
16 x 18 - 6 packs	16 x 20 - 6 packs	18 x 18 - 6 packs	18 x 20 - 6 packs	18 X 22 - 6 packs	20 x 20 - 8 packsc

## INSTALLING YOUR DREAMLINE CUSHION ONTO THE WHEELCHAIR

### ATTACHMENT

The cushion is designed to attach to the wheelchair with hook/loop attachment directly to the seat base or slung upholstery of the wheelchair or to a separate fitted seat base.

Check the cushion fits the wheelchair frame. If the cushion is too narrow it may move around on the wheelchair frame. The cushion should fit snugly between the armrests of the wheelchair (to the outside edges of the seat rails of the wheelchair).

If the sling upholstery seat base of the wheelchair causes the cushion to “hammock” use a lightweight Dreamline Cushion Rigid base. The Dreamline rigid base attaches via Velcro directly to the underside of the cushion foam inner.

### ORIENTATION

The raised centre portion of the cushion (medial thigh support pommel) is the **top front** of the cushion.

The sides of the cushion must be installed parallel to the seat rails of the wheelchair.

Top Front of cushion



## FITTING THE CUSHION TO USER

Before fitting, check the size of the cushion suits the user. The cushion must fully support the base of the user. If the cushion is too short the user may be unstable and uncomfortable in the cushion. A cushion which is too long may cause the user to pull forward into posterior pelvic tilt. When the user is sitting right back in the cushion against the backrest there should be approximately 1" (2 finger spaces) from behind the user's knee to the front edge of the cushion.

If the user has a leg length discrepancy, remove the cushion foam inner from the cover then mark & cut the front of the cushion foam on the side which is shorter to suit so the user can sit straight in the cushion. An un-accommodated leg length discrepancy may cause posterior pelvic tilt and/or pelvic rotation.

Ensure the length from the top surface of the cushion to the top surface of the footplate wheelchair is set up correctly for the user. The left side may be different to the right side so both need to be measured individually. The lower leg length should be set up so that the front of the cushion lightly takes the weight of the user. If the footplates are set too high the weight of the user will be concentrated under the Pelvis increasing the risk of pressure. When the footplates are set too low the user may slip forward in the seat &/or circulation may be reduced to the lower limbs.

Sit the user straight in the cushion with an even amount of spacing each side of the user. This will help ensure the user develops a symmetrical mid-line posture.

Use the positioning pads to accommodate or correct pelvic & femoral asymmetries. They can be set up according to the wishes of the prescribing therapist to asymmetrically change the contours of the cushion. i.e., to increase the pre-ischial shelf, correct pelvic obliquity etc.

## ADJUSTING DREAMLINE ASSIST, SUPPORT & CONTOUR CUSHIONS

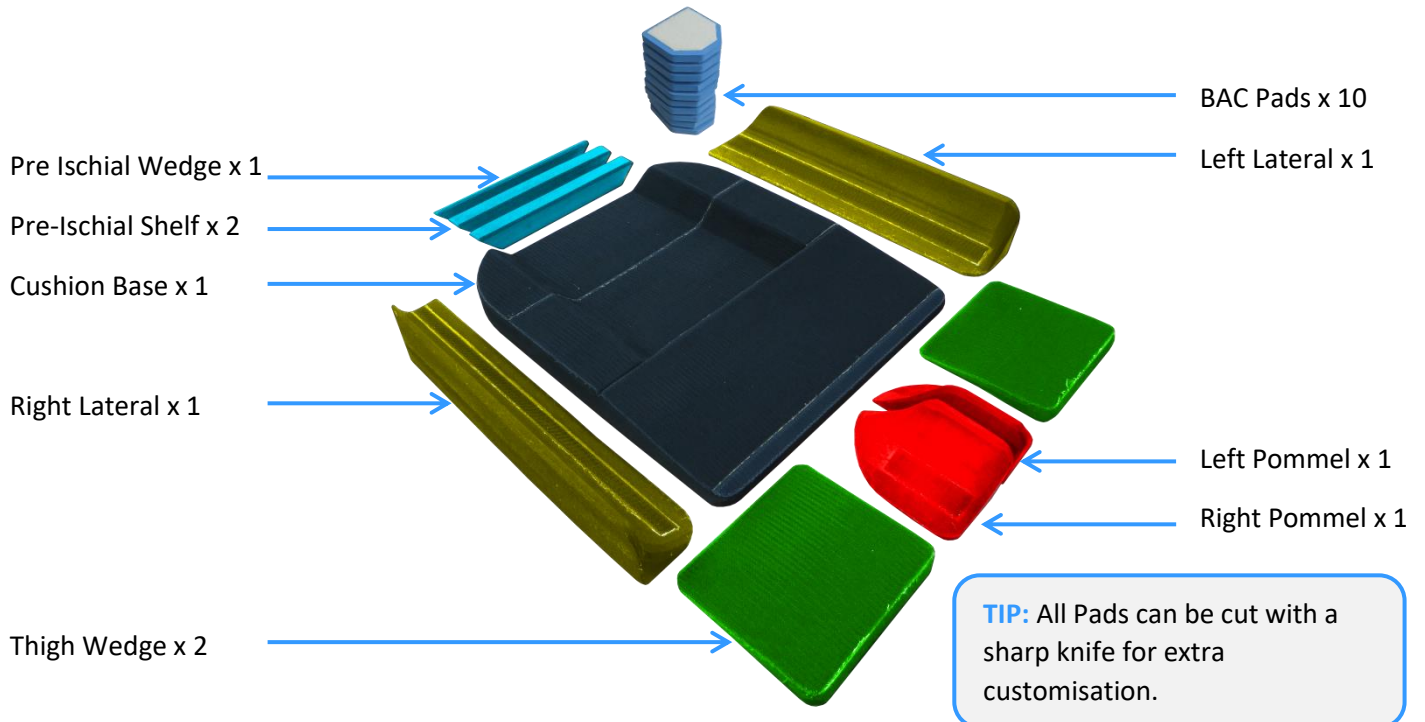
These cushions incorporate hook receptive loop panel on the under surface of the foam inner. The Pelvic Obliquity pads may hook into position directly to this panel inside the covers.



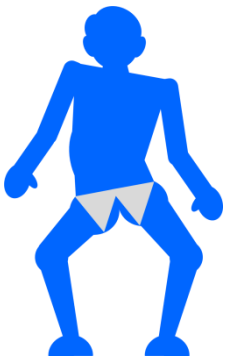
## ADJUSTING DREAMLINE G3 & STX CUSHIONS

These cushions incorporate hook receptive loop panel on the under surface of the foam inner. The Pelvic Obliquity pads may hook into position directly to this panel inside the covers.

### STANDARD POSITIONING COMPONENTS OF THE STX CUSHION



### PELVIC OBLIQUITY



Use the stack of 10 BAC Pads to correct / accommodate Pelvic obliquity. Pads can be layered for higher build requirements.



### PELVIC ROTATION



The Pre-Ischial Pads may be spaced out, angled, flexed into a curved shape or removed to create the exact space for the pelvis.

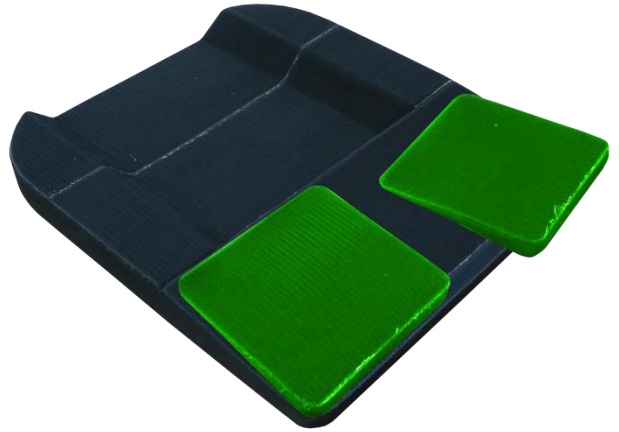




## LEG LENGTH DISCREPANCY



Thigh wedges may be used to accommodate a leg length discrepancy and an abducted or adducted sitting position.



## TIGHT HAM-STRINGS

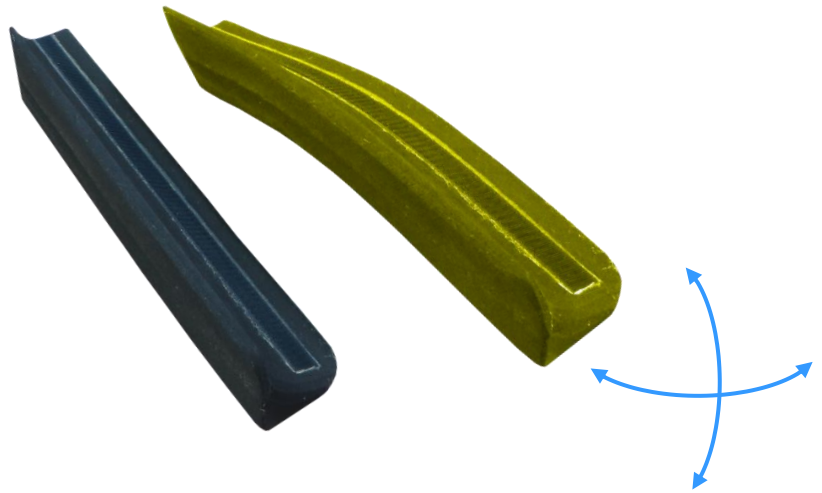


Thigh wedges are able to be removed or layered to achieve different angles of lift, raising and lowering each femur individually. This is particularly useful for tight hamstrings.

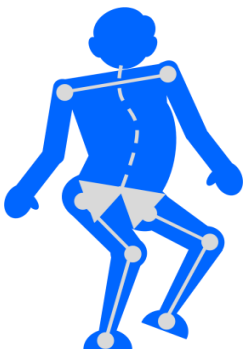


## LATERALS FLEXED

The Laterals may be flexed into shape accurately follow the contours from the pelvis to the knee. This enables a smooth unbroken surface along the leg for improved weight distribution.



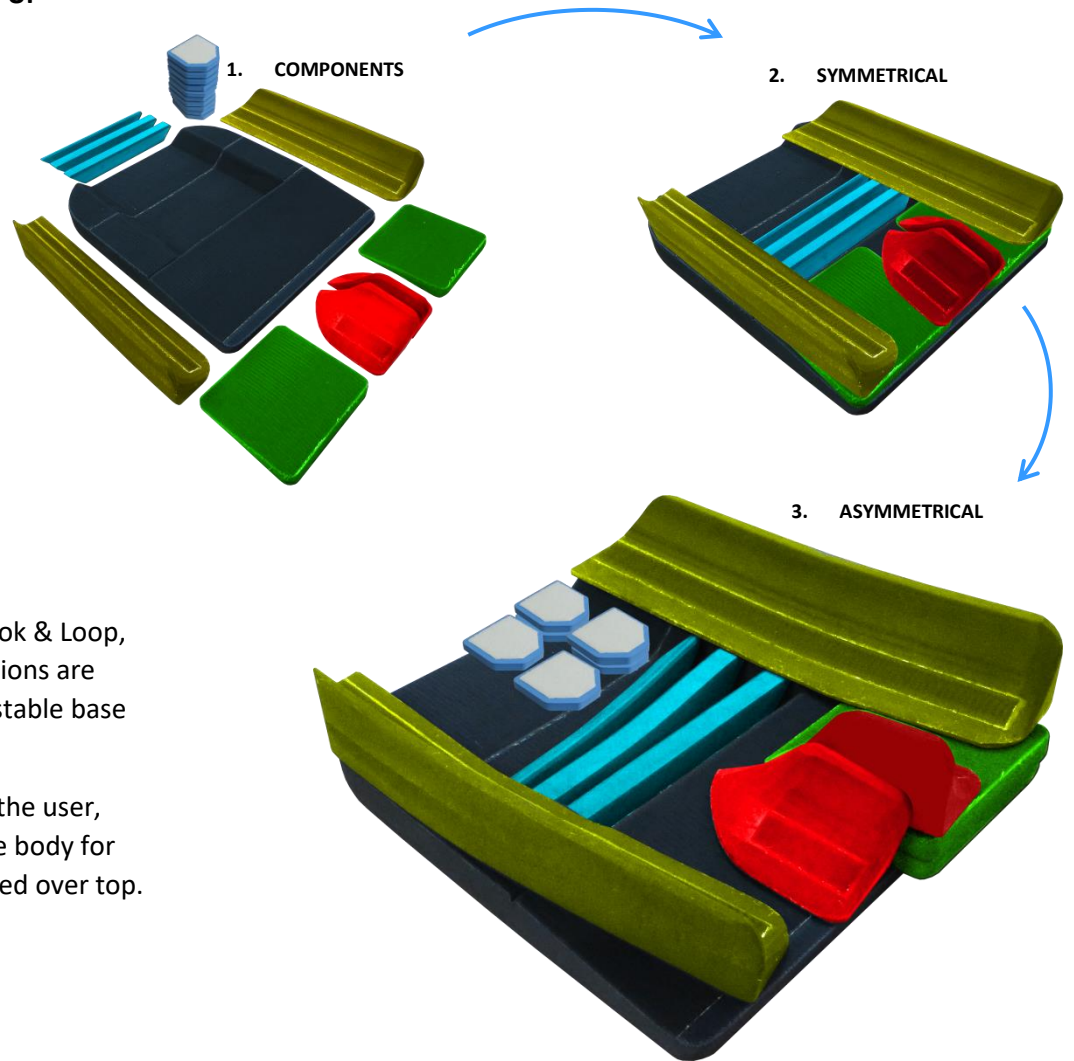
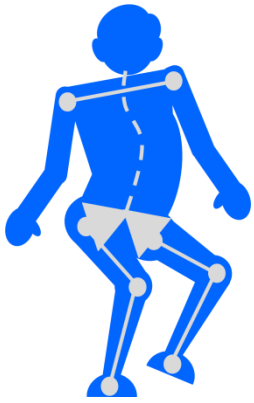
## POMMEL ASSYMETRICAL SET-UP



The Pommel is divided into 2 halves, so the exact desired position of each femur is achieved. The pommel is firm for accurate long-term positioning.



## FULL ASYMMETRICAL SET-UP



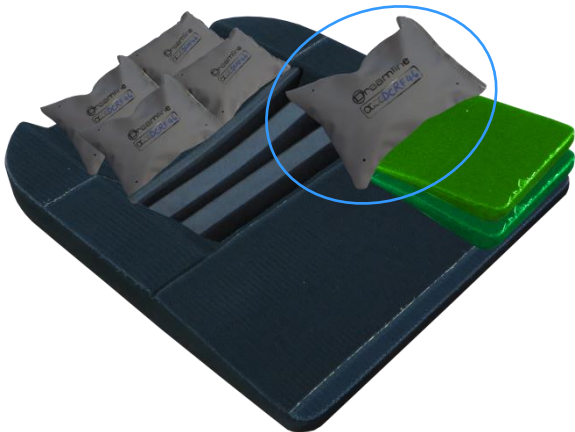
With surfaces covered in hook & Loop, accurate asymmetrical positions are easily achieved providing a stable base for each individual.

When building the base for the user, allow extra room around the body for the comfort wrap to be placed over top.

...& more

### CLUSTER PACKS AS SHAPERS & FILLERS

Use extra cluster packs (gel or foam) to create more shapes & fill cavities if required.



### EXTRA LATERAL SEGMENTS

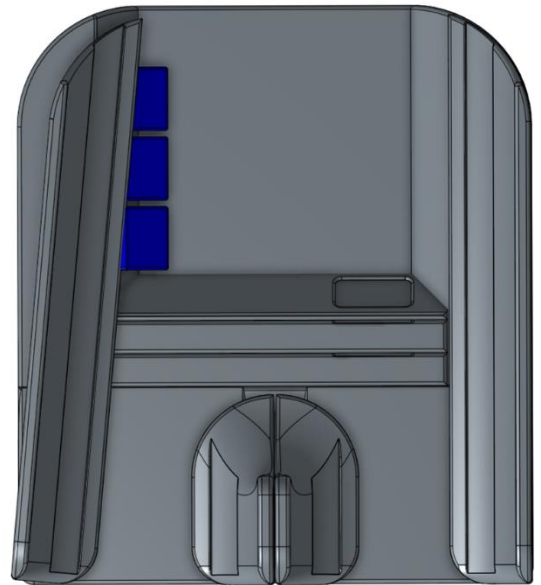
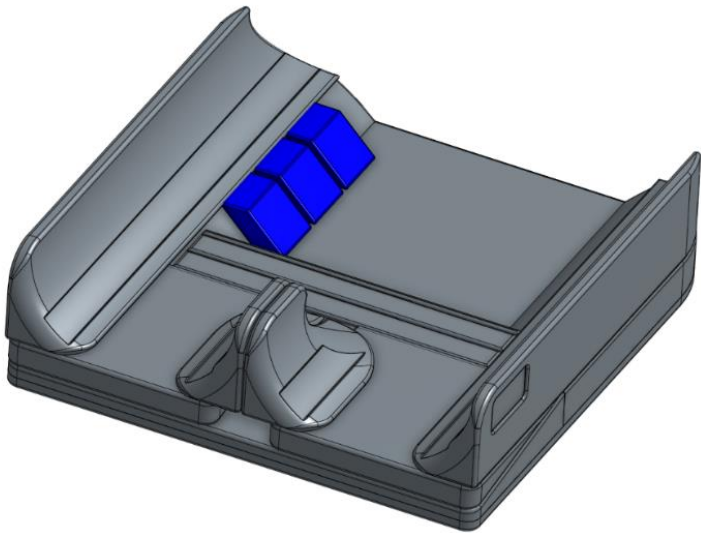
Extra Lateral Segments are able to be purchased separately to further customise the seat base to the user.



## STX CUSHION SIDE INFILL PADS

Use these infill pads to:

- Offset the ischial well laterally to accommodate windswept postures.
- Build equally on each side of ischial well so the laterals can be tapered to accommodate abduction.



## OTHER ACCESSORIES

Cushion Rigid Base



Cushion Rigid Lateral



## **INTENDED USE**

This item is intended for persons with disabilities as a seat cushion for a wheelchair. If there are any questions about product installation or compatibility with the wheelchairs, ROLAPAL customer service should be consulted.

**Indication:** Partially or permanently non-ambulatory limited to a sitting position

**Contra-indication:** None

## **CAUTION - RISKS IDENTIFIED**

- This cushion can be positioned in many ways, take care to ensure the desired outcome is achieved for the occupant.
- Keep away from heaters and open flame – risk of fire.
- The cushion covers are removable for cleaning. Do not use if these are not correctly in place under the user.
- Take care when using this cushion in direct sunlight. Parts may heat up and increase risk of burns to the occupant.
- The cushion must overhang the front edge of the seat base it is attaching to by at least ½” (13mm) to protect against skin damage occurring from the seat base front edge.
- Do not use the cushion if the occupant’s weight is more than the maximum recommended user weight of the cushion.
- The set-up of the wheelchair can affect the comfort of the cushion. Ensure the wheelchair is configured to match the measurements & sitting position of the user.
- An incorrectly fitted cushion can cause potential harm to the user. Carefully read the fitting instructions for correct positioning & orientation of the cushion on the wheelchair.

## **REPORTING OF INCIDENTS**

All serious incidents occurring in relation to the product must be reported to ROLAPAL Ltd and your competent authority!

## **DISCLAIMER**

Because of the infinite adjustability of the cushion, Rolapal accepts no responsibility for the therapeutic outcome for the occupant. This is the responsibility of the prescribing seating therapist or technician.

## **REUSABILITY**

The product is basically suitable for reuse. The reuse handover takes place after the product has been checked by the specialist trade.

## **SPECIAL STORAGE/HANDLING CONDITIONS**

Do not store in environments above 50°. Do not store close to roofs to avoid heat. If not in use, please store in dust free environments.

## **PRODUCT LIFE EXPECTANCY**

This item is expected to last between 2 – 5 years under normal use but this can change dramatically between users depending on the length of time in use, environment & weight of the user.

## **END OF LIFE RECYCLING**

At the end of its useful life, the foam inner and covers are general waste disposal.

## **GUARANTEE**

Dreamline Cushions are manufactured to a very high standard and carry a guarantee against defects in materials and craftsmanship for a period of 18 months under normal use.

Any item found to be defective will be repaired or replaced at the discretion of Rolapal Ltd.

Goods must be returned to Rolapal Ltd for assessment and the new repaired or replaced item will be sent free of charge.

This guarantee does not cover items which are damaged from general “wear and tear”, misuse or negligence.

## CARE INSTRUCTIONS



Do not iron



Drip dry only



Machine washable



No bleach or strong cleaners.

- **Outer Cover** (Nylon / Spandex / PU / Polyester / Neoprene)
  - Machine washable to 50°C. Drip dry only. Do not Iron. Do not use bleach or other strong cleaners.
- **Inner Cover** (PU / Nylon / Spandex)
  - Wipe down only with soapy water and drip dry thoroughly before re-installing the outer cover. Do not iron, do not use bleach or strong cleaners.
- **Foam Inner**
  - KEEP DRY. The life span of the cushion will be great reduced if the cushion becomes wet.
  - Do Not wash the foam inner. If it accidentally becomes wet, separate it from the cover & drip dry it thoroughly before re-installing the cover.

# Dreamline

WHEELCHAIR SEATING



*Posture adaptive*

*Pressure reactive*

*Performance effective*

**Ignite**

**SPLASH**

**Dreamline**

WHEELCHAIR SEATING



**Woven Air**

**snooza**



**Quality Assurance**

*Rolapal Ltd is an ISO 9001, 14001 & 45001 certified company!*

# Dreamline

## WHEELCHAIR SEATING

by

# ROLAPAL



Dr Dreamline

Check out our "How to"  
Videos Pages

Manufactured By:



**ROLAPAL Ltd**

14 Marphona Crescent, Takanini 2105 Auckland, New Zealand

Email: [info@rolapal.co.nz](mailto:info@rolapal.co.nz)

Website: [www.rolapal.co.nz](http://www.rolapal.co.nz)

EC

REP

BEO MedConsulting Berlin GmbH

Helmholtzstraße 2–9, D-10587 Berlin

