

Ignite

*empowering
performance*



Dreamline

A man in a dark blue t-shirt and grey pants is sitting in a black wheelchair on a dirt path in a forest. He is looking towards the right. The path is lined with large trees and the ground is covered with fallen leaves. The lighting is soft, suggesting late afternoon or early morning. A white diagonal line separates the image from a black background on the right side of the page.

*maximising
postural
efficiency*

*Stabilising one's own posture
constantly consumes energy.*

*When **stability & balance**
is improved through accurate
trunk support more focus is
redirected to the task at hand.*

Ignite | BACKREST SYSTEM

*From its comfortable pressure redistributing foam inner to its easy-to-use **U2 Compact** quick-release hardware & sporty appeal the lightweight Dreamline **Ignite** Backrest System is a pleasure to use.*



***user
focused***

4 pillars of design

1 / USER COMFORT

Utilising Dreamline's Bubble Contour design for comfortable immersion with breathability channels. A central channel is included for spinal relief.

The foam pad is overlaid with a pressure redistributing viscoelastic "Sunmate" foam for extra long-term comfort.

FLO2™ engineered 4-way ultra-stretch fabrics with moisture wicking properties enable the user to fully utilise the comfort of the pad.

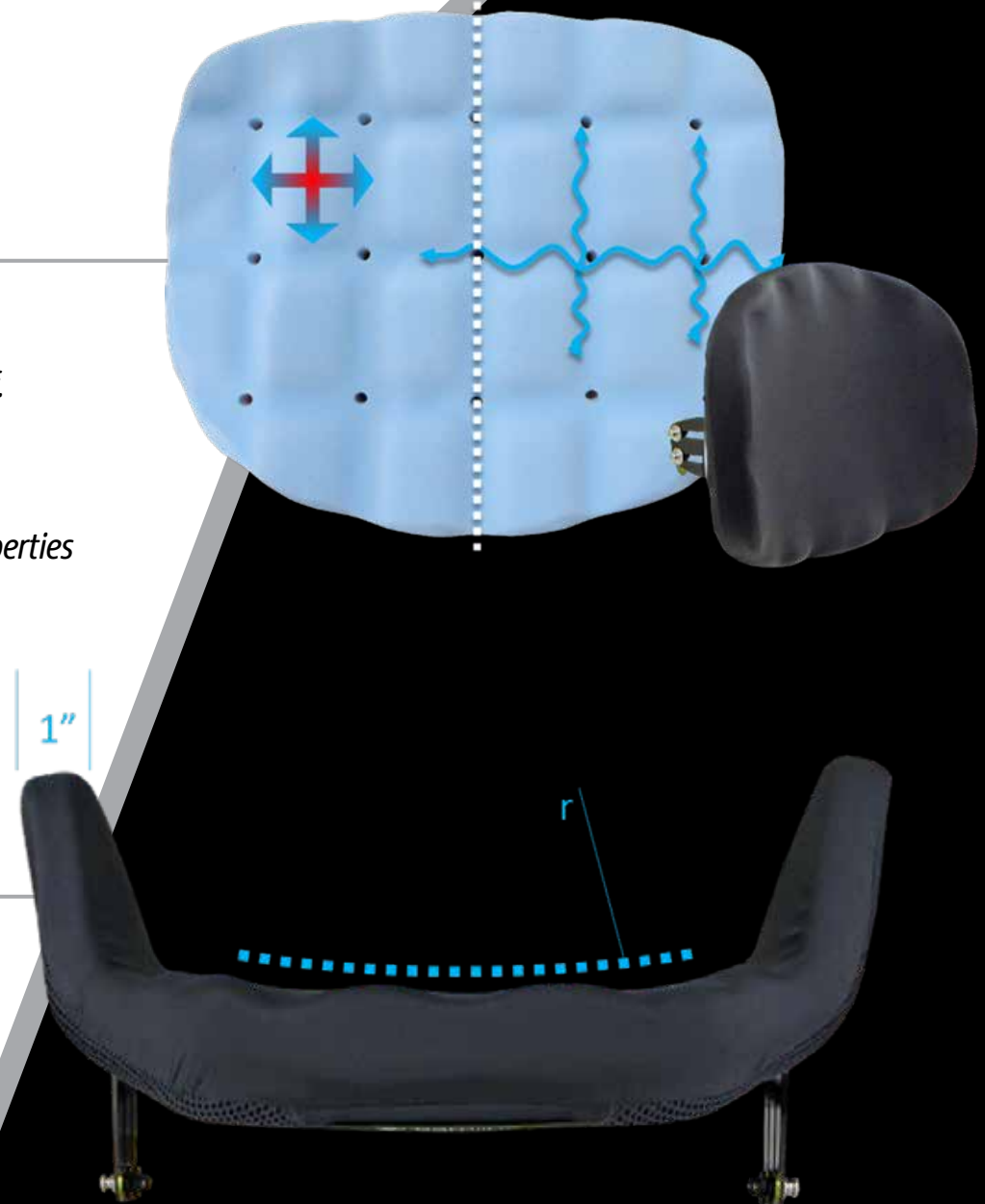
The pad & cover lock to the shell securely for trouble free riding.

The cover is removable & machine washable.

2 / CONTOUR PROFILE

Specifically designed with an open curvature shape with a more closed lateral angle to encourage mid-line sitting posture.

Slim 1" wide laterals maximise free arm movement & ensure a compact user-to-wheelchair fit.



Ignite

3 / POSITIONING

Ignite backrests have a series of positioning pads supplied in the standard kit including a Lumbar pad & a pair of wide wedges & narrow wedges. The added ability to include Dreamline's BAC Backrest Advanced Contouring system to any Ignite backrest ensures users with asymmetrical postures will be well supported. Truly reversible with an offset lateral design ensuring the lateral height best suits the user.

4 / ADJUSTABILITY

The proven U2 quick-release hardware is effortless & quick to operate. The U2 Compact clamps attach to tubing diameters from 19mm (3/4") to 25mm (1"). Enormous width adjustability (4") ensures the right fitting backrest is selected for the user & ensures it will fit the wheelchair frame. Up to 60deg. of angle adjustment (+/- 30deg.) & 5" of depth adjustment takes the backrests ability beyond the need.



easy selection

2 types

CARBON



ALUMINIUM



3 contour depths



DEEP



MID



ACTIVE



ignite

3 heights

1 / SHOULDER

2 / THORACIC

3 / LUMBAR

Ignite

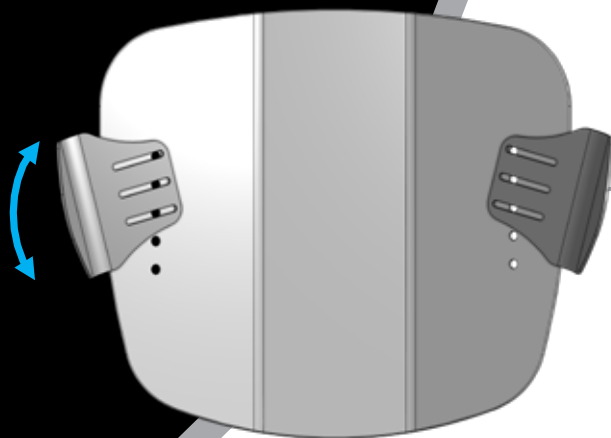
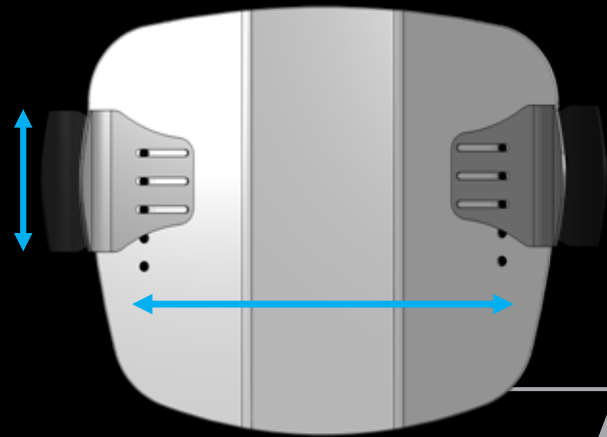
pro carbon series



Dreamline Ignite Pro backrests have a lightweight solid weave carbon fibre shell. This makes for a much stronger shell than hollow core or honeycomb designs.

The weave pattern has been carefully designed to enable a limited flex for comfort with maximum strength for every-day use.

*adjustable
aluminium
laterals*



ignite

Dreamline **ignite Pro** Backrests with Mid or Deep Contour options incorporate robust aluminium laterals which attach to the shell through the same fixings as the backrest mounting brackets for added strength.

The Laterals are width, height & angle adjustable for an accurate fit to the user.

active / mid / deep contours

sizing matrix

ACTIVE + MID CONTOUR SIZE OPTIONS

| | | WIDTH | | | | | | |
|--------|-----|-------|-----|-----|-----|-----|-----|-----|
| | | 14" | 15" | 16" | 17" | 18" | 19" | 20" |
| HEIGHT | 7" | | | | | | | |
| | 8" | | | | | | | |
| | 9" | | | | | | | |
| | 10" | | | | | | | |
| | 11" | | | | | | | |
| | 12" | | | | | | | |
| | 13" | | | | | | | |
| | 14" | | | | | | | |
| | 15" | | | | | | | |
| | 16" | | | | | | | |
| | 17" | | | | | | | |
| | 18" | | | | | | | |
| | 19" | | | | | | | |
| | 20" | | | | | | | |

DEEP CONTOUR SIZE OPTIONS

| | | WIDTH | | | | | | |
|--------|-----|-------|-----|-----|-----|-----|-----|-----|
| | | 14" | 15" | 16" | 17" | 18" | 19" | 20" |
| HEIGHT | 7" | | | | | | | |
| | 8" | | | | | | | |
| | 9" | | | | | | | |
| | 10" | | | | | | | |
| | 11" | | | | | | | |
| | 12" | | | | | | | |
| | 13" | | | | | | | |
| | 14" | | | | | | | |
| | 15" | | | | | | | |
| | 16" | | | | | | | |
| | 17" | | | | | | | |
| | 18" | | | | | | | |
| | 19" | | | | | | | |
| | 20" | | | | | | | |

active / mid / deep contours

empowering performance

*with the right backrest,
postural efficiency
& sitting ability can
increase, helping to
improve overall
performance*

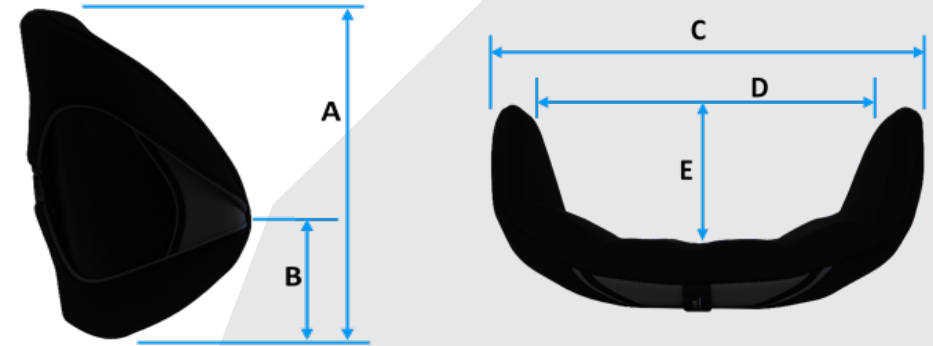
ignite



backrest specifications

ACTIVE CONTOUR

| CODE | SIZE (W x H) | A (Backrest shell height) | B (Height to centre of lateral) | C (Backrest O/A width) | D (Internal space between laterals) | E (Lateral contour depth) |
|------------|--------------|---------------------------|---------------------------------|------------------------|-------------------------------------|---------------------------|
| DIBA1407 | 14" x 07" | 170mm | 80mm | 285mm | – | 40mm |
| DIBA1412 | 14" x 12" | 300mm | 120mm | 285mm | – | 40mm |
| DIBA1416 | 14" x 16" | 400mm | 170mm | 285mm | – | 40mm |
| DIBA1507 | 15" x 07" | 170mm | 80mm | 310mm | – | 40mm |
| DIBA1512 | 15" x 12" | 300mm | 120mm | 310mm | – | 40mm |
| DIBA1516 | 15" x 16" | 400mm | 170mm | 310mm | – | 40mm |
| DIBA1608 | 16" x 08" | 200mm | 90mm | 335mm | – | 45mm |
| DIBA1613 | 16" x 13" | 330mm | 120mm | 335mm | – | 45mm |
| DIBA1618 | 16" x 18" | 450mm | 195mm | 335mm | – | 45mm |
| DIBA1708 | 17" x 08" | 200mm | 90mm | 360mm | – | 45mm |
| DIBA1713 | 17" x 13" | 330mm | 120mm | 360mm | – | 45mm |
| DIBA1718 | 17" x 18" | 450mm | 195mm | 360mm | – | 45mm |
| DIBA1808 | 18" x 08" | 200mm | 90mm | 385mm | – | 50mm |
| DIBA1813 | 18" x 13" | 330mm | 120mm | 385mm | – | 50mm |
| DIBA1818 | 18" x 18" | 450mm | 195mm | 385mm | – | 50mm |
| DIBA2008 | 20" x 08" | 200mm | 90mm | 435mm | – | 50mm |
| DIBA2013 | 20" x 13" | 330mm | 120mm | 435mm | – | 50mm |
| DIBA2018 | 20" x 18" | 450mm | 195mm | 435mm | – | 50mm |
| DIBACUST | – | – | Proportional | – | – | 60mm |
| DIBACUSTXL | – | – | Proportional | – | – | 60mm |



MID CONTOUR

| CODE | SIZE (W x H) | A (Backrest shell height) | B (Height to centre of lateral) | C (Backrest O/A width) | D (Internal space between laterals) | E (Lateral contour depth) |
|-------------|--------------|---------------------------|---------------------------------|------------------------|-------------------------------------|---------------------------|
| DIBM1407 | 14" x 07" | 170mm | 80mm | 340mm | 280mm | 85mm |
| DIBM1412 | 14" x 12" | 300mm | 120mm | 340mm | 280mm | 85mm |
| DIBM1416 | 14" x 16" | 400mm | 170mm | 340mm | 280mm | 85mm |
| DIBM1507 | 15" x 07" | 170mm | 80mm | 365mm | 305mm | 85mm |
| DIBM1512 | 15" x 12" | 300mm | 120mm | 365mm | 305mm | 85mm |
| DIBM1516 | 15" x 16" | 400mm | 170mm | 365mm | 305mm | 85mm |
| DIBM1608 | 16" x 08" | 200mm | 90mm | 390mm | 290mm | 100mm |
| DIBM1613 | 16" x 13" | 330mm | 120mm | 390mm | 290mm | 100mm |
| DIBM1618 | 16" x 18" | 450mm | 195mm | 390mm | 290mm | 100mm |
| DIBM1708 | 17" x 08" | 200mm | 90mm | 415mm | 355mm | 100mm |
| DIBM1713 | 17" x 13" | 330mm | 120mm | 415mm | 355mm | 100mm |
| DIBM1718 | 17" x 18" | 450mm | 195mm | 415mm | 355mm | 100mm |
| DIBM1808 | 18" x 08" | 200mm | 90mm | 440mm | 380mm | 100mm |
| DIBM1813 | 18" x 13" | 330mm | 120mm | 440mm | 380mm | 100mm |
| DIBM1818 | 18" x 18" | 450mm | 195mm | 440mm | 380mm | 100mm |
| DIBM2008 | 20" x 08" | 200mm | 90mm | 500mm | 440mm | 100mm |
| DIBM2013 | 20" x 13" | 330mm | 120mm | 500mm | 440mm | 100mm |
| DIBM2018 | 20" x 18" | 450mm | 195mm | 500mm | 440mm | 100mm |
| DIBM CUST | – | – | Proportional | – | – | 100mm |
| DIBM CUSTXL | – | – | Proportional | – | – | 100mm |

backrest specifications



DEEP CONTOUR

| CODE | SIZE (W x H) | A (Backrest shell height) | B (Height to centre of lateral) | C (Backrest O/A width) | D (Internal space between laterals) | E (Lateral contour depth) |
|------------|-----------------|---------------------------------|---------------------------------------|------------------------------|---|---------------------------------|
| DIBD1412 | 14" x 12" | 300mm | 120mm | 350mm | 310mm | 130mm |
| DIBD1416 | 14" x 16" | 400mm | 170mm | 350mm | 310mm | 130mm |
| DIBD1418 | 14" x 18" | 450mm | 195mm | 350mm | 310mm | 130mm |
| DIBD1512 | 15" x 12" | 300mm | 120mm | 350mm | 310mm | 130mm |
| DIBD1516 | 15" x 16" | 400mm | 170mm | 350mm | 310mm | 130mm |
| DIBD1518 | 15" x 18" | 450mm | 195mm | 350mm | 310mm | 130mm |
| DIBD1613 | 16" x 13" | 330mm | 140mm | 400mm | 350mm | 150mm |
| DIBD1618 | 16" x 18" | 450mm | 195mm | 400mm | 350mm | 150mm |
| DIBD1620 | 16" x 20" | 500mm | 230mm | 400mm | 350mm | 150mm |
| DIBD1713 | 17" x 13" | 330mm | 140mm | 425mm | 375mm | 150mm |
| DIBD1718 | 17" x 18" | 450mm | 195mm | 425mm | 375mm | 150mm |
| DIBD1720 | 17" x 20" | 500mm | 230mm | 425mm | 375mm | 150mm |
| DIBD1813 | 18" x 13" | 330mm | 140mm | 450mm | 400mm | 150mm |
| DIBD1818 | 18" x 18" | 450mm | 195mm | 450mm | 400mm | 150mm |
| DIBD1820 | 18" x 20" | 500mm | 230mm | 450mm | 400mm | 150mm |
| DIBD2013 | 20" x 13" | 330mm | 140mm | 500mm | 450mm | 150mm |
| DIBD2018 | 20" x 18" | 450mm | 195mm | 500mm | 450mm | 150mm |
| DIBD2020 | 20" x 20" | 500mm | 230mm | 500mm | 450mm | 150mm |
| DIBDCUST | - | - | Proportional | - | - | 150mm |
| DIBDCUSTXL | - | - | Proportional | - | - | 150mm |

PRODUCT WEIGHT

| BACKREST (including quick-release hardware) | WEIGHT (Kg) |
|--|-------------|
| Ignite Pro (18 x 30 Carbon) | 1.38 |
| Ignite Pro Mid (18 x 13 Carbon Mid Aluminium Laterals) | 1.65 |
| Ignite Active (18 x 13) | 1.8 |
| Ignite Mid (18 x 13) | 2.1 |
| Ignite Deep (18 x 13) | 2.2 |
| Ignite U2 Compact Clamps Only (Pair) | 0.31 |

HARDWARE OPTIONS

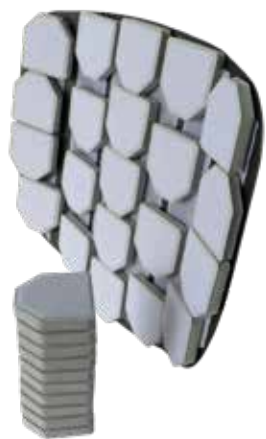
Fixed



Quick-Release



accessories + upgrades



*BAC System for
asymmetrical postures*



*Compact
L-brackets*



*Extra
Depth Kit*



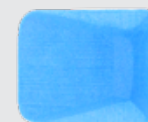
*4-point Upgrade
(Tall Backs)*



*Lateral
Stability
Wedge*



*Narrow
Stability
Wedge*



*Lumbar
Pad*

*Modesty
Panel*



*External Swing-away Laterals
(Active Contour backs)*



*Spare Outer
Cover*



*Incontinence
Cover*



Ignite

COLOUR HIGHLIGHTS

“Spacer” fabric Panels on the border are swapped out with colour panels.



Orange



Red



Green



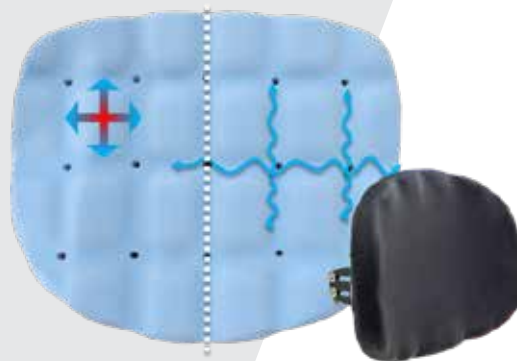
Blue



Pink



Purple



FLO2™ ENGINEERED FABRIC

FLO2™ is an advanced high-performance fabric designed for medical and high energy sporting users.



Extreme
4-Way Stretch



Air
Exchange



Moisture
Wicking



Durable



Fire
Retardant



tested for safety

The **Dreamline Ignite Backrests U2** compact hardware is fully crash tested to meet the standards of WC20 & ISO7176-19 for forward facing transportation with an occupant in a motor vehicle.

When occupied in a motor vehicle, Dreamline backrests must only be used on wheelchair frames which provide four anchorage points & pelvic belt anchor points which comply with the requirements of RESNA WC-4:2012, Section 19.

Ignite

Rolapal Ltd
09 634 2300
info@rolapal.co.nz
www.rolapal.co.nz

Dreamline

Ignite

by

ROLAPAL